

6a Public Affairs Profile

Source

C. Gwin Morris
Office of Public Affairs

The Office of Public Affairs is the primary strategic link between The University of Texas Health Science Center at Houston and its principal constituencies. The role of Public Affairs is to support and advance the mission of the health science center by engaging its constituencies with a clear, consistent and compelling message, involving them in a mutually meaningful and beneficial relationship with the institution, and motivating them to higher levels of support for the institution. The office also provides counsel and support in media relations, marketing, communications, and graphic design to the university's six schools and to administrative offices including Development, Human Resources, Governmental Relations, and the Office of the President, among others.

Public Affairs is organized into three departments: Marketing and Community Relations, Media Relations, and Institutional Communications. Each department carries out its assigned role, while at the same time collaborating interdependently with the other departments to achieve the mission of the office.

Media Relations

The media relations team is the official spokesperson with the news media, initiating stories that support the institutional mission, responding to media inquiries and coordinating crisis communications. The team also provides media training for university executives and program leaders.

Institutional Communications

The communications team is the principal distributor of official institutional communications to internal and external audiences. The team uses print media, e-mail and the Web to highlight the health science center's distinctive capabilities and accomplishments, to inform employees and students, and to provide consumer-health information to the public. The team also provides consultation on meeting the university's Web standards. Information is available online at <http://uthouston.edu/graphicguide/web> or you may call 713 500 3296 for assistance.

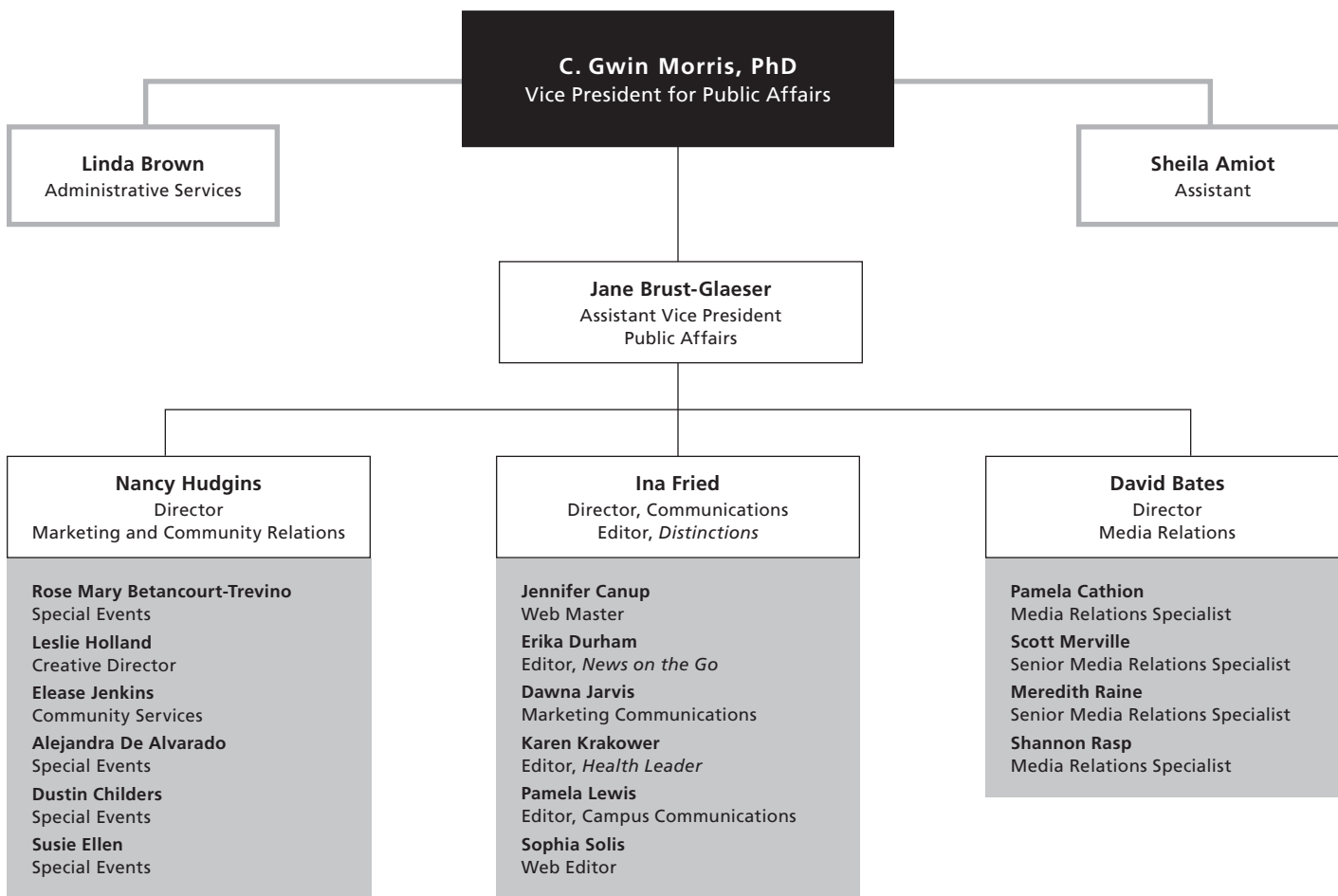
Marketing and Community Relations

The marketing and community relations team leads the health science center's integrated marketing initiative, creating a common public "face" and consistent "voice" for the institution. The team also coordinates special "signature" events – including Founders' Fun Fest, Faculty Honors Convocation, Heart to Heart, Eeyore's Fun Run, STAR Awards, the UT Scholarship Golf Classic, groundbreakings and dedications, anniversary events, and the President's Executive Luncheons. As a part of its commitment to Houston and the state, Public Affairs supports community activities and participates in community events, including health fairs, health walks and fund-raisers. The team also coordinates an institutional speakers' bureau and volunteer program.

Graphic and Editorial Standards

The Office of Public Affairs is responsible for managing the university's image via communications and graphic design. Among the services offered is counsel on graphic and editorial standards, to ensure the appropriate use of the name and logotype for the health science center as a whole and for each of the schools. The standards apply to all forms of communication – electronic and print – including Web sites, brochures, newsletters, posters, stationery and more. Information about the graphic and editorial standards is available online at www.uthouston.edu/graphicguide or you may call 713 500 3137 for assistance.

Source
C. Gwin Morris
Office of Public Affairs



6a Development Profile

Source

Jerre Iversen
Office of Development

Fund Raising

The Office of Development coordinates the health science center's private fund raising activities and is committed to building a model development program to support present and anticipated needs. The development program is balanced by a centralized major individual and planned gifts program (gifts of \$100,000+), an unrestricted annual giving program, a corporate and foundation relations program, a prospect research program, a gift processing and acknowledgment program and a special projects/board relations program. All initiatives are designed to communicate effectively the priorities of the institution to all constituencies and to establish relationships that will fulfill the philanthropic objectives of donors to establish endowments, construct and equip buildings, provide scholarships/fellowships and support research and clinical programs.

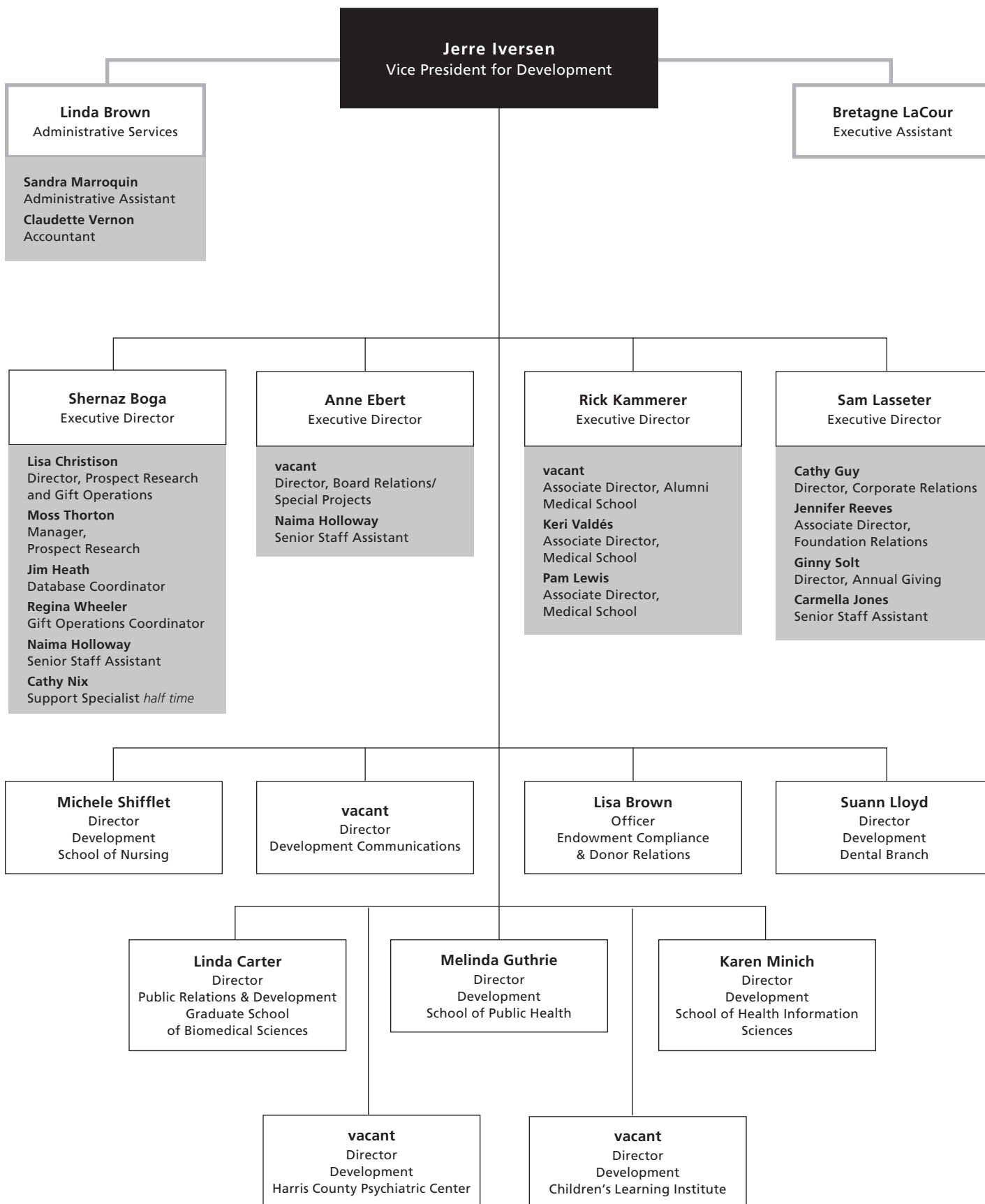
Major Priority Areas for Private-Sector Support

For fiscal years 2000-2004, the health science center's major fund raising priority has been the New Frontiers campaign, a \$200 million effort to build a new home for the Brown Foundation Institute of Molecular Medicine for the Prevention of Human Diseases and to retain and recruit the top scientists in the world. That campaign is nearing completion. A new University campaign is now anticipated that may be announced in mid 2005.

Fund Raising Effectiveness

Fund raising supports the health science center's faculty as well as its education, research, collaboration and disease prevention mission. In terms of fund raising effectiveness, for FY 2004, cash gifts (new cash gifts and pledge payments) totaled \$35 million. In terms of new cash gifts and new pledge commitments, the FY 2004 total was \$51 million, the second-highest total in institutional history. The cost to raise one dollar was 6.6 cents.

Source
 Jerre Iversen
 Office of Development



6a University Development

Source

Jerre Iversen
Office of Development

Levels of Endowments

At the end of FY 2004, the University held 271 endowments, up from 255 in FY 2003. Book value of those endowments by end of FY 2004 stands at \$66.5 million. Endowments are a critical element in the educational institution's vitality and quality. UTHSC-H encourages the establishment of permanent endowments to recruit, support and encourage faculty and students, stimulate productive research and build facilities. The UT System Board of Regents gratefully accepts gifts and approves the establishment of each endowment at the minimum levels indicated:

Distinguished University Chair	\$2 million	Professorship	\$100,000
Distinguished Chair	\$1 million	Fellowship	\$50,000
Chair	\$500,000	Scholarship	\$10,000
Distinguished Professorship	\$250,000		

The first five categories of endowed academic positions listed above are held by faculty who are appointed to these positions by the UT System Board of Regents. The appointee, or holder, uses the endowment income both for salary supplementation and for other professional support, including assistance in the holder's research.

Fellowships are also established and appointees are approved by the UT System Board of Regents. Endowment income may be used to supplement the salary and professional support of a holder. The income also may be used to provide temporary support, not to exceed one academic year, of distinguished scholars who are in temporary residence while participating in planned academic programs; of visiting scholars for special academic programs or purposes; of component faculty who have made unique contributions to academic life or to knowledge in their academic discipline; and of component faculty who have been selected for teaching excellence.

Scholarships and support of other educational activities are vital to the success of an educational institution. These endowments are designated for specific purposes of interest to donors such as support of specific research, awards to outstanding teachers or students, scholarships and student loans and support of specific laboratories, among others.

Current Endowments

Distinguished University Chair

John S. Dunn Distinguished University Chair
in Ophthalmology, 1992
Richard S. Ruiz, MD

John S. Dunn, Sr., Distinguished University Chair
in Physiology and Medicine, 1998
Ferid Murad, MD, PhD

Richard S. Ruiz, MD Distinguished University Chair in
Ophthalmology, 1998
No current appointment

Martin Bucksbaum Distinguished University Chair Fund
in Heart Disease, 2000
K. Lance Gould, MD

Robert A. Welch Distinguished University Chair
in Chemistry, 2003
No current appointment

Distinguished Chair

Robert A. Welch Distinguished Chair in Chemistry, 1973
John L. Spudich MD

John S. Dunn Distinguished Chair in Radiology, 1987
Susan D. John, MD

Distinguished Chair
in Pathology and Laboratory Medicine, 1993
L. Maximilian Buja, MD

Distinguished Chair in Molecular Pathology, 1993
Robert L. Hunter, Jr., MD, and PhD

C. R. Bard, Inc./Edward J. McGuire, MD Distinguished Chair
in Urology, 1996
Michael L. Ritchey, MD

Nancy, Clive and Pierce Runnells Distinguished Chair in
Neurosurgery, 1997
Guy Clifton, MD

Roy M. and Phyllis Gough Huffington Distinguished Chair
in Neurology, 2000
James C. Grotta, MD

George and Cynthia Mitchell Distinguished Chair in the
Neurosciences, 2003
No current appointment

Nancy and Rich Kinder Distinguished Chair in
Cardiovascular Disease Research, 2003
No current appointment

James T. Willerson Distinguished Chair in Cardiovascular
Research in Tribute from the Ewing Halsell Foundation
No current appointment

Linda and Ronny Finger Foundation Distinguished Chair in
Neurodegenerative Diseases, 2004
No current appointment

Chair

Pat R. Rutherford, Jr., Chair in Psychiatry, 1982

Alan Swann, MD

A. G. McNeese Chair in Pediatric Surgery, 1982

Kevin P. Lally, MD

Edward Randall III Chair in Internal Medicine, 1983

James T. Willerson, MD

Dr. Thomas D. Cronin Chair in Plastic Surgery, 1986

Donald H. Parks, MD

Denton A. Cooley, MD, Chair in Surgery, 1986

Richard J. Andrassy, MD

Harvey S. Rosenberg, MD, Chair in Pathology and Laboratory Medicine, 1987

Dani S. Zander, MD

Roy M. and Phyllis Gough Huffington Chair in Gerontology, 1988

Kenneth K. Wu, MD, PhD

Roy M. and Phyllis Gough Huffington Chair in Neurology, 1988

Frank M. Yatsu, MD

Isla Carroll Turner Chair in Gerontological Nursing, 1988

Sharon Ostwald, PhD, RN, CS

Cecil M. Crigler, MD, Chair in Urology, 1991

No current appointment

Adriana Blood Chair in Neurology, 1992

Ian J. Butler, MD, FRACP

Bernice Weingarten Chair in Ophthalmology, 1992

Charles A. Garcia, MD

Fayez Sarofim Chair in Ophthalmology, 1992

No current appointment

Joe M. Green, Jr., Chair in Ophthalmology, 1994

Richard W. Yee, MD

Frederic B. Asche Chair in Ophthalmology, 1995

No current appointment

Edward T. Smith, MD, Chair in Orthopaedic Surgery, 1995

Thomas O. Clanton, MD

Jesse H. Jones Chair in Structural Biology, 1996

No current appointment

Cullen Chair in Molecular Medicine, 1996

No current appointment

Fondren Chair in Cellular Signaling, 1997

Stanley G. Schultz, MD

Elizabeth Bidgood Chair in Rheumatology, 1997

Frank C. Arnett, Jr., MD

Joseph C. Gabel, MD, Chair in Anesthesiology, 1997

Robert E. Drake, PhD

C. Frank Webber, MD Chair in Family Medicine, 1997

Robert E. Drake, PhD

Elizabeth Morford Chair in Ophthalmology, 1998

Stephen C. Massey, PhD

President George Bush Chair in Cardiovascular Medicine, 1998

Dianna M. Milewicz, MD, PhD

John S. Dunn, Sr. Chair in Biochemistry and Molecular Biology, 1998

William Dowhan, PhD

Hans J. Muller-Eberhard, MD, PhD Chair in Immunology, 2000

Irma Gigli, MD

Rockwell Chair in Society and Health, 2000

No current appointment

James T. and Nancy B. Willerson Chair, 2001

Bruce C. Kone, MD

June and Virgil Waggoner Chair, 2002

John H. Byrne, PhD

William S. Kilroy, Sr. Chair in Pulmonary Diseases, 2003

No current appointment

Luciano Lemos Endowed Chair in Translational Research, 2004

No current appointment

M. David Low Chair in Public Health, 2004

No current appointment

Kozmetsky Family Chair in Human Genetics, 2004

Eric Boerwinkle, PhD

Distinguished Professorship

H. Wayne Hightower Distinguished Professorship in the Medical Sciences, 1981

Stanley G. Schultz, MD

Raul G. Caffesse, DDS, M.S., Dr. Odont., Distinguished Professorship in Periodontics, 1995

No current appointment

John S. Dunn, Sr., Distinguished Professorship in Oncology Nursing, 1996

Marlene Zichi Cohen, PhD

Alkek/Williams Distinguished Professorship, 1996

James T. Willerson, MD

John P. McGovern, MD, Distinguished Professorship in Nursing, 1996

Patricia Starck, DSN, RN, FAAN

John P. McGovern, MD, Distinguished Professorship in Ophthalmology, 1996

No current appointment

Distinguished Professorship continued

James H. "Red" Duke, Jr., MD, Distinguished Professorship in Surgery, 1996
Frederick A. Moore, MD

Lee and Joseph Jamail Distinguished Professorship, 1997
Janet Meininger, PhD, RN, FAAN

Lee and Joseph Jamail Distinguished Professorship, 1997
Maura Baun, DNSc, RN, FAAN

Lee and Joseph Jamail Distinguished Professorship, 1997
No current appointment

Lorne D. Bain Distinguished Professorship in Public Health and Medicine, 1997
Lu Ann Aday, PhD

Michelle Bain Distinguished Professorship in Medicine and Public Health, 1997
Jon E. Tyson, MD

The Children's Fund, Inc. Distinguished Professorship in Pediatric Surgery Trauma, 1983
Charles S. Cox, MD

Roy M. and Phyllis Gough Huffington Distinguished Professorship in Anesthesiology, 1998
Jeffrey Katz, MD

Vale Asche Russell Distinguished Professorship in Ophthalmology, 1998
Thomas C. Prager, PhD, MPH

Walter and Mary Mischer Distinguished Professorship in Molecular Medicine, 1996
Irma Gigli, MD

John Edward Tyson Distinguished Professorship in Cardiology, 2000
S. Ward Casscells, MD

Levit Family Professorship in the Neurosciences, 2002
No current appointment

George and Mary Josephine Hamman Foundation Distinguished Professorship in Cardiovascular Research, 2002
No current appointment

John S. Dunn Distinguished Professorship I, 2004
No current appointment

John S. Dunn Distinguished Professorship II, 2004
No current appointment

John S. Dunn Distinguished Professorship III, 2004
No current appointment

John S. Dunn Distinguished Professorship IV, 2004
No current appointment

Janice Davis Gordon Distinguished Professorship for Bowel Cancer Research, 2004
No current appointment

The Jerry and Maury Rubenstein Foundation Distinguished Professorship in Heart Disease, 2004
No current appointment

Jerold B. Katz Distinguished Professorship for Nursing Research, 2004
Sandra Hanneman, PhD, RN, FAAN

Professorship

Josey Professorship in Dermatology, 1970
Robert E. Jordon, MD

James W. Rockwell Professorship in Public Health, 1977
No current appointment

Betty Wheless Trotter Professorship in the Medical Sciences, 1980
Yun-Xin Fu, PhD

John P. McGovern Professorship in Health Promotion, 1981
Guy S. Parcel, PhD

David R. Park Professorship in Pediatric Medicine, 1981
John W. Sparks, MD

Jack R. Winston Visiting Professorship in Cosmetic and Restorative Dentistry, 1981
Visiting Professorship

John B. Holmes Professorship in the Clinical Sciences, 1982
James H. Duke, Jr., MD

Kraft W. Eidman Professorship in the Medical Sciences, 1983
James A. Ferrendelli, MD

Emma Sue Hightower Professorship in Obstetrics, Gynecology and Reproductive Sciences, 1983
Larry C. Gilstrap, III, MD

Mary W. Kelsey Professorship in the Medical Sciences, 1983
Herbert L. DuPont, MD

Griff T. Ross Professorship in Humanities and Technology in Health Care, 1984
Stanley J. Reiser, MD, PhD

Dr. John T. Armstrong Professorship in Obstetrics, Gynecology and Reproductive Sciences, 1984
Robert C. Maier, MD

Richard Warren Mithoff Professorship in Neonatal/Perinatal Medicine, 1985
Fernando R. Moya, MD

William N. Finnegan, III Professorship in the Dental Sciences, 1985
No current appointment

Robert Greer Professorship in the Biomedical Sciences, 1986
Steven J. Norris, PhD

Professorship continued

William M. Wheless, III Professorship
in Biomedical Sciences, 1987
Michael D. Mauk, PhD

Allan King Professorship in Public Health, 1987
Robert J. Hardy, PhD

The Berel Held, MD Professorship in Obstetrics, Gynecology
and Reproductive Sciences, 1988
Susan M. Ramin, MD

J. Ralph Meadows Professorship in Internal Medicine, 1989
Barbara E. Murray, MD

A. G. McNeese, Jr. Professorship in Ophthalmology, 1991
No current appointment

Walter and Ruth Sterling Professorship
in Ophthalmology, 1991
Malcolm L. Mazow, MD

George S. Bruce, Jr. Professorship
in Arthritis and Other Rheumatic Diseases, 1993
John D. Reveille, MD

Adrien and Gladys Drouilhet Visiting Professorship
in Ophthalmology, 1994
Visiting Professorship

Theodore J. and Mary E. Trumble Professorship
in Aging Research, 1994
Nancy I. Bergstrom, PhD, RN, FAAN

Professorship in Forensic Pathology, 1994
Luis A. Sanchez, MD

Theodore R. and Maureen O'Driscoll Levy Endowed
Professorship in Cardiology Research, 1996
Francisco Fuentes, MD

Robert K. Creasy, MD Professorship in Obstetrics,
Gynecology and Reproductive Sciences, 1996
Allan R. Katz, MD

James H. Steele, D.V.M., Professorship in Public Health, 1996
Joseph B. McCormick, MD

Laurence and Johanna Favrot Professorship
in Cardiology, 1996
No current appointment

Beth Toby Grossman Professorship
in Spirituality and Healing, 1996
Thomas R. Cole, PhD

Levit Family Professorship in the Neurosciences, 1997
Jack C. Waymire, PhD

Jay Brent Sterling Professorship
in Cardiovascular Medicine, 1997
Richard W. Smalling, MD, PhD

Ernest L. Kurth, Jr., Professorship in Ophthalmology, 1997
Jeffrey Day Lanier, MD

Stephen A. Lasher Professorship in Ophthalmology, 1997
No current appointment

Gibson and Martha Gayle Professorship
in Ophthalmology, 1998
No current appointment

Alfred W. Lasher, III, Professorship in Ophthalmology, 1998
Helen A. Mintz-Hittner, MD

Blair Justice, PhD, Professorship in Mind-Body Medicine and
Public Health, 1998
No current appointment

Dan and Lillie Sterling Professorship
in Clinical Gastroenterology, 1998
Gene D. LeSage, MD

John P. McGovern Professorship in Addiction Nursing, 1998
Marianne T. Marcus, EdD, RN, FAAN

Michael Matthew Knight Memorial Professorship
in Pediatrics, 1999
Susan Landry, PhD

Bartels Family Professorship in Neurology, 1999
Jerry S. Wolinsky, MD

John P. McGovern Graduate School of Biomedical Sciences
Endowed Professorship, 2001
George M. Stancel, PhD

Thomas Stull Matney, PhD, Endowed Professorship
in Environmental and Genetic Sciences, 2002
Stephen P. Daiger, PhD

John P. McGovern, MD, Professorship
in Oslerian Medicine, 2003
Bryant Boutwell, DrPH

The Keenan Professorship
in Cardiovascular Disease Research, 2003
No current appointment

Patti Jayne Ross Professorship
in Obstetrics and Gynecology, 2004
Patti Jayne Ross, MD

Becker Family Foundation Professorship
in Diabetes Research, 2004
No current appointment

Lectureship

discontinued by the UT Board of Regents in 1988

James J. and Una T. Truitt
Medical Educational Endowment, 1955

Mr. and Mrs. George T. Abell Lectureship in Neurology, 1976

Robert E. Gross Lectureship in Pediatric Surgery, 1978

Grant Taylor Lectureship in Medical Ethics, 1981

John P. McGovern, MD, Lectureship
in the Allied Health Sciences, 1982

Sam and Elizabeth Nixon Visiting Lectureship
in Family Practice, 1982

Dr. Henry W. Withers Lectureship in Family Practice, 1983

Ray A. and Robert L. Kroc Lectureship
in the Graduate School of Biomedical Sciences, 1985

Harold Cooper Lectureship for the Department of
Psychiatry and Behavioral Sciences, 1987

William S. Fields Lectureship in Neurology, 1988

Roger J Bulger Visiting Lecture Series in Health Sciences, 1988

Endowed Awards, Lecture Series, and Endowed Special Funds

The Amelia McCarthy Memorial Fund
for Dr. Walter Henry Scherer, 1960

John H. Freeman Fund, 1972

The R. P. Doherty Memorial Fund, 1973

John H. Freeman Award for Faculty Teaching, 1978

Walter G. Sterling Awards for Excellence, 1978

Walter Henry Scherer Fund for Dentistry, 1983

The Bettie Collins and Helene Collins Sprong Fund, 1984

John P. McGovern, MD Award
for Outstanding Teacher, 1984

The Harris County Medical Society Auxiliary Award
for Clinical Excellence in Nursing, 1986

UTDB Alumni Association Endowment Fund, 1986

The Women of Rotary Club of Houston UT Dental Branch
Student Scholarship and Loan Fund, 1987

Research Projects in Academic Surgery Endowment, 1988

Roger J. Bulger Visiting Lecture Series
in Health Sciences, 1988

C. Frank Webber, MD Prize for Student Research, 1989

Adriana Blood Endowed Research Fund in Neurology, 1992

Walter W. Kirkendall, MD Endowed Lecture Series, 1993

Doris Simon Student Fund, 1993

Reuel A. Stallones Memorial Endowed Lecture Series, 1993

Walter W. Kirkendall, MD Endowed Lecture Series, 1993

Dr. Edward Randall, Jr. Memorial Fund, 1993

James T. Willerson, MD Endowed Lecture Series, 1994

Welch Foundation Endowment
in Chemistry and Related Sciences, 1994

Jay Brent Sterling Research Fund
in the Medical School, 1995

Nunez, Esteban, Fuentes - NEF Diversity Endowment for
Medical Students in the Medical School, 1995

Marcus M. Key Scholarship
in Occupational and Environmental Health, 1995

The Department of Anesthesiology Excellence Fund
in the Medical School, 1995

David Mendell, MD Endowed Fellowship, 1996

University of Texas Health Science Center at Houston School
of Nursing Endowment Research Fund, 1996

Carlos E. Nasjleti, DDS, Endowment Fund
for Periodontal Research, 1996

John P. McGovern, MD Award in Health Promotion, 1996

Michael J. Jeansonne, DDS, MS, '90
Endowed Research Fund, 1996

John H. Trolinger Award for Ethics in Healthcare, 1996

Theodore R. Levy Endowed Cardiac Research Fund, 1997

Stephen C. Hoffman, MD Student Assistance Fund, 1997

Center for Outcome Study and Program Evaluation
in Mental Health, 1997

The Henry and Ruth Blaustein Rosenberg Endowment in
Honor of Judith Rosenberg Hoffberger, 1997

S. Ward Casscells III, MD Scholars Award, 1997

Dan and Jay Sterling Fellowship in Gastroenterology, 1998

The Weatherhead Fund to Support PET, 1998

Jesse H. Jones Fellowship
in Oral and Maxillofacial Surgery, 1998

Helen A. Krause Endowed Research Fund
in Renal Diseases, 1998

Herman A. Krause Endowed Research Fund
in Orthopaedics, 1998

UT-Houston Golf Tournament Endowment, 1998

Leonard Ormsby Endowment Fund
in the Medical School, 1998

Endowed Awards continued

Lee and Joseph D. Jamail Research Fund in the Department of Ophthalmology and Visual Sciences, 1998

Rose Brigham Klepfer Research Fund, 1999

John M. and Susan M. Powers
Dental Student Research Fund, 1999

Joseph N. Corriere, Jr., Research Fund in Urology, 1999

Eliza Lovett Randall Fellowship in Rheumatology, 2000

Ernst Knobil Endowment Fund, 2000

Weatherhead P.E.T. Center Fund, 2000

John Henry Ewell and Walter L. New Coronary Physiology Research Endowment, 2000

Elizabeth W. Quinn Oncology Research Award, 2000

John S. Dunn Research Foundation Nursing Scholars Program, 2000

Herbert and Margaret W. DuPont
Master Clinical Teaching Award, 2000

Milton Yellen Memorial Fund, 2000

Dorothy A. Otto Award Fund, 2001

R. W. (Bill) Butcher Endowment
for the Graduate School of Biomedical Sciences, 2001

Louis Faillace, MD Lecture Series, 2001

William Randolph Hearst Gerontological
Nurse Practitioner Endowment, 2002

Cheves M. and Isabella C. Smythe Endowed Award for Excellence in Resident Education, 2002

Dan and Jay Sterling Fellowship in Gastroenterology, 2002

John R. Ludington, Jr., DDS, MSD, Endowed Fund in Endodontics, 2002

The Dental Hygiene Class of 2003 Endowment Fund, 2002

Eula Gross Wintermann Quasi Endowment, 2002

Mary Ann (Sandy) Lunsford Student Externship in Cardiovascular Medicine, 2002

The Sam Taub and Beatrice Burton
Endowed Fellowship, 2003

IMM General Endowment, 2003

Helene Fuld Health Trust Scholarship Fund for Baccalaureate Nursing Students, 2004

The Roy M. Huffington Bicentennial Endowment Fund for the Benefit of The University of Texas School of Nursing at Houston, 2004

Phyllis Gough Huffington Endowed Lecture Series, 2004

Muller-Eberhard Memorial Lecture Series, 2004

The John P. McGovern, MD Center for Health, Humanities, and the Human Spirit, 2004

Hitoshi Nikaidoh, MD, Award
for Humanism in Medicine, 2004

Scholarships

Texas Graduate Nurses Association
Scholarship and Loan Fund, 1940

Holman Taylor, Sr., MD, & Holman Taylor, Jr. MD Scholarship Fund in Dermatology, 1972

Lucy Massenberg Scholarship Fund, 1973

The Deborah Frances Soderstrom Memorial
Scholarship Fund, 1981

Joe T. Nelson Memorial Scholarship Fund, 1982

The Dr. Lawrence E. Lamb Scholarship Fund
(School of Public Health), 1985

The M. D. Anderson Matching Scholarship Fund, 1985

Laurence E. Baker Memorial Scholarship Fund, 1987

The UTMS-H Alumni Association Scholarship Fund, 1988

The D. Jack Kilian Memorial Scholarship, 1988

The Hardin-Parents Organization Scholarship, 1989

The Meg Davis Memorial Scholarship Fund, 1990

The Bernard Saltzberg Research Scholarship Fund, 1990

William D. and Helen L. Guynn Research
and Scholarship Fund, 1991

Daniel C. Kamas, DDS, Endowed Scholarship Fund, 1991

Catherine E. and A. G. McNeese, Jr., Medical Student
Scholarship Fund, 1991

Raul G. Caffesse, D.D.S., M.S.
Endowed Scholarship Fund, 1991

The Ronald V. Glauser, D.D.S., Scholarship Endowment, 1991

Dierks Surgical Scholarship Fund, 1991

Dean Ornish Endowed Scholarship Fund, 1992

Lauren and Adam Strauss Endowed Scholarship, 1992

Southeast Section of T.W.P.C.A. Endowed Scholarship, 1992

Dr. Heyl G. Tebo Endowed Scholarship Fund, 1992

Joseph T. Ainsworth, MD, Country Doctor,
Houston Livestock Show and Rodeo

Endowed Scholarship, 1993

Susan G. Sampson Endowed Scholarship, 1993

Andrew Sowell-Wade Huggins Endowed Scholarship, 1993

Reuel A. Stallones Memorial Scholarship Fund, 1993

Leslie A. Chambers Endowed Scholarship, 1994

Scholarships continued

- Richard K. Severs Endowed Scholarship Fund, 1994
- G. Roger Florky Memorial Scholarship Fund, 1994
- Floyd L. Haar, MD, Scholarship Fund in the Medical School, 1995
- The UT-Houston School of Nursing Partners Scholarship Fund, 1995
- John C. Ribble, MD, Endowed Scholarship Fund, 1995
- The Corinia Diaz & Walter Bajsel Endowed Scholarship Fund, 1995
- RoseAnn Waindel Endowed Memorial Scholarship for Emergency Care Nursing, 1996
- Dawn M. Gross Memorial Scholarship Fund, 1996
- Richard D. Remington Memorial Student Scholarship Fund, 1996
- William Randolph Hearst Endowed Nursing Scholarship, 1996
- Ed and Myrtle Adele Stinnett Scholarship, 1997
- Helen Jiminez Dichoso, RN, Endowed Scholarship, 1997
- Houston Sigma Kappa Foundation Endowed Scholarship, 1997
- Gian Luigi Giannotti Endowed Memorial Scholarship in Rheumatology, 1997
- Dr. M. Stewart West Memorial Scholarship in Biometry, 1997
- Medical School Student Scholarship Fund, 1997
- William E. Pasteur, Jr., Memorial Scholarship in Neurology, 1998
- Guy and Alisa McDaniels Memorial Scholarship, in the School of Public Health, 1998
- Charles and Sybil Nolan Oncology Nursing Endowed Scholarship, 1998
- Sjoerd Steunebrink Endowed Scholarship, 1998
- Rennie Makohon Lesem Endowed Scholarship in Nursing, 1999
- UT-Houston Student InterCouncil Scholarship, 1999
- Bryant Boutwell, DrPH, and John P. McGovern, MD, Medical School Scholarship Fund, 1999
- The Class of 1973, 1974, 1975, 1976 and 1977 25th Reunion Scholarship Endowment, 1999
- Daniel H. Lam Research Scholarship, 1999
- Dr. Donald Charles Kroeger Student Research Scholarship, 2000
- J. Fred Annegers Memorial Scholarship Fund, 2000
- Ronald J. Lorimor Memorial Scholarship Fund in Behavioral Sciences, 2000
- Nancy A. Akers Endowed Scholarship in the School of Nursing, 2000
- Frederick C. Elliot/Severin Knutson/Rupert Estel Hall Dental Student Scholarship Fund, 2000
- Betty Murphy Scholarship in the Medical School, 2001
- Speros Martel Scholarship for the Aging, 2001
- Dee S. and Patricia Osborne Endowed Scholarship in the Neurosciences, 2001
- Roberta M. and Jean M. Worsham Endowed Scholarship, 2001
- Helmuth and Mary Fuchs and James R. Waterston Endowed Scholarship
- Jo Ellen Reed-Gilstrap, RN, Scholarship Fund, 2002
- Organization of Parents and Friends Scholarship, 2002
- Florence and Harold Smith Memorial Scholarship, 2002
- Patti Jayne Ross Scholarship, 2002
- Collins Hill, Jr. Memorial Scholarship in Cardiology, 2002
- Charles and Rosemary Conlon Scholarship Fund, 2002
- The Dolan-Mullen Family Scholarship in Public Health Education/Health Promotion, 2002
- Dean's Endowed Scholarship Fund, 2003
- Marian Frutiger Endowed Scholarship in Gerontology Nursing, 2003
- Dr. Edgar H. Boelshche Scholarship, 2003
- Sam and Elizabeth Nixon Student Scholarship Fund, 2004
- T. C. Hsu Memorial Scholarship Fund, 2003
- Hitoshi Nikaidoh, MD, Scholarship for Humanism in Medicine, 2004
- John E. Scanlon Memorial Scholarship, 2004
- City Federation of Women's Clubs Endowed Scholarship in the Biomedical Sciences, 2004

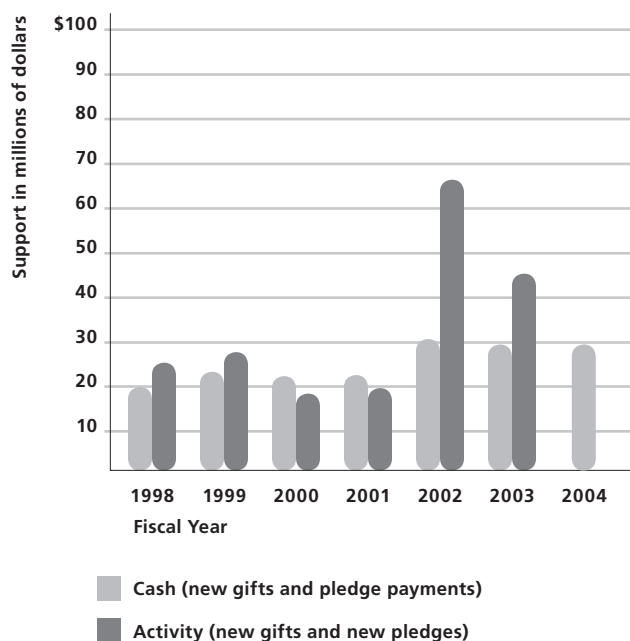
Deferred and Pending Endowments

- Guynn Research Chair in Biological Psychiatry
- Hollister Research Fund, 1997
- Jack H. Mayfield, MD, Chair in Surgery
- L. Maximilian and Donna K. Buja Chair Fund in the Medical School, 1998
- George R. Brown Fund, 2000
- Albert J. Weatherhead III Fund, 2001

Voluntary Support 2004

Source
 Jerre Iversen
 Office of Development

Source of Gift	Amount
	FY 2004
Alumni	\$135,335
Parent	24,445
Individual	6,099,107
Foundation	18,898,809
Corporation	3,728,377
Organization	533,527
Grand Total	\$29,419,600



Endowment Trends 1995-2004

Source
 Jerre Iversen
 Office of Development

a as of August 31

Year	Description	Total number of endowments ^a	Book value of all endowments ^a	Market value of all endowments ^a	Annual % change in book value
1995		110	15,101,150	21,381,321	3.2%
1996		123	17,865,414	25,557,977	18.3%
1997		150	21,753,244	34,750,969	21.8%
1998		165	27,207,666	39,200,105	25.1%
1999		181	32,995,715	52,081,012	21.3%
2000		207	41,300,883	68,705,610	25.2%
2001		221	46,291,319	64,564,814	12.1%
2002		236	56,247,329	66,638,813	21.5%
2003		255	61,241,529	76,426,419	8.9%
2004		271	66,483,469	88,629,257	8.6%

