

The health science center's research enterprise continues to gain momentum in fulfilling our mission to become a leading research institution in North America. The statistics support this ideal, as shown in charts representing our research expenditures (page 104), National Institutes of Health awards (page 111), and the number of journal publications faculty have authored (page 114). Research expenditures have grown significantly over the past 10 years, an overall increase of 81.4 percent. Our NIH award recipient ranking nationally for 2004 was 62nd of 532 higher education institutions that receive NIH funding.

We are home to an extensive range of experts in scientific discovery. Much research is pursued in collaboration with other faculty members in the health science center, across the Texas Medical Center and at other national and international institutions searching to solve the health care problems around the globe.

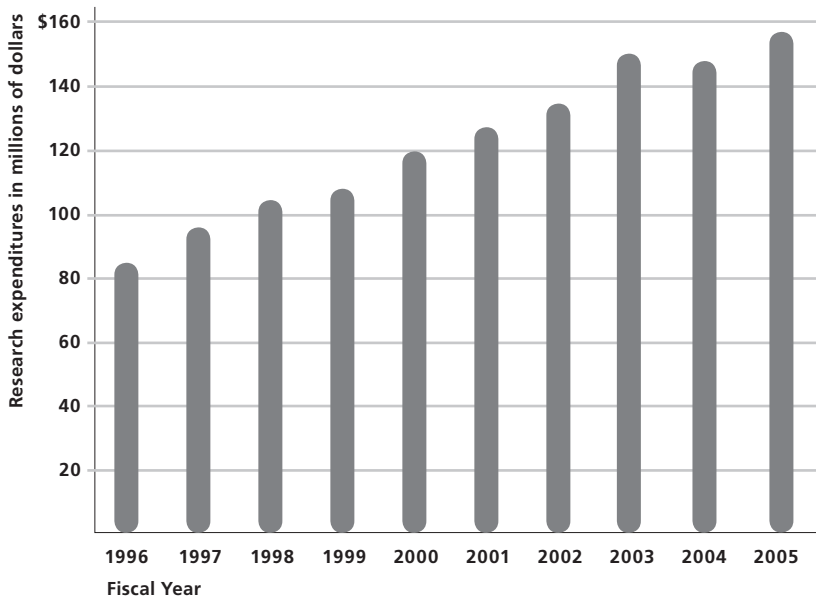
### 3 Research Expenditures by Unit 1996-2005

Source  
Kathy Jalufka  
Budget and Financial Reporting

a Includes institution-wide activities that support academic functions not specific to any one school.

These figures include direct and indirect costs, as well as appropriated and designated costs, for research expenditures only. They do not include expenditures for instruction, public service, academic support, student services, institutional support or scholarships and fellowships. Some expenditures that may have been previously reflected in University Administration or Academic Support have been reallocated to the appropriate school and thus may not reconcile to annual financial reports.

Unit	Amount per fiscal year									
	1996	1997	1998	1999	2000	2001	2002	2003	2004	2005
Dental Branch	\$1,657,825	\$1,818,833	\$1,949,722	\$1,559,890	\$1,558,030	\$1,951,129	\$2,443,297	\$2,352,155	\$1,865,410	\$1,775,186
Graduate School of Biomedical Sciences	50,387	81,049	179,374	220,459	291,269	264,091	333,840	285,212	213,040	207,861
School of Health Information Sciences	1,061	960	920	159,177	180,839	987,789	1,465,804	1,960,167	1,929,133	1,885,931
Medical School	52,506,775	57,100,798	63,714,758	71,896,827	77,778,442	78,557,674	86,228,713	94,999,993	95,633,230	94,636,291
School of Nursing	366,079	783,634	824,988	907,039	1,230,035	1,365,519	1,299,910	1,309,909	899,751	978,366
School of Public Health	26,965,562	31,317,904	30,554,882	26,737,982	33,145,870	36,357,421	36,864,233	36,260,400	35,390,656	39,052,780
Harris County Psychiatric Center	16,881	205,204	334,428	156,344	146,151	132,336	159,823	151,358	148,068	65,616
The Brown Foundation Institute of Molecular Medicine	1,242,380	3,344,278	3,381,044	3,747,142	3,616,572	3,539,969	4,808,637	7,599,557	6,286,088	7,596,255
Academic Support Area <sup>a</sup>	2,232,097	2,942,204	2,813,373	1,650,928	2,704,661	3,156,355	3,840,312	4,680,374	5,909,963	8,090,710
<b>Grand Total</b>	<b>\$85,039,047</b>	<b>\$97,594,864</b>	<b>\$103,753,489</b>	<b>\$107,035,788</b>	<b>\$120,651,869</b>	<b>\$126,312,283</b>	<b>\$137,444,569</b>	<b>\$149,599,125</b>	<b>\$148,275,339</b>	<b>\$154,288,996</b>



# UT Health Component Research Expenditures 1998-2004

Source

a Totals reconcile with the university's Annual Financial Report.

Research Expenditures: Texas Public Universities and Health-related Institutions  
Texas Higher Education Coordinating Board,  
April 2005

This table shows a comparison of UT System health components' research expenditures as reported to the Texas Higher Education Coordinating Board. The health science center's expenses are strictly those designated research in the Annual Financial Report. The numbers reported in the table on the previous page include the numbers in this table plus designated funds considered by the schools to be research, minus any not considered by the schools to be research. Since the Texas Higher Education Coordinating Board's deadline for the receipt of FY 2005 data is after the press deadline for *Fact Book 2006*, it will appear in *Fact Book 2007*.

School	Amount per fiscal year							% change 2003 to 2004
	1998	1999	2000	2001	2002	2003	2004	
UTSWMC-Dallas	\$153,711,130	\$163,518,455	\$204,553,015	\$228,358,435	\$264,917,313	\$279,184,343	\$316,691,352	13.4%
UTMB-Galveston	76,604,190	83,236,093	93,869,763	102,390,824	114,536,942	136,871,560	138,451,817	1.2%
<b>UTHSC-H<sup>a</sup></b>	<b>102,443,781</b>	<b>106,703,164</b>	<b>122,914,171</b>	<b>128,161,248</b>	<b>141,437,957</b>	<b>152,926,687</b>	<b>151,030,161</b>	<b>-1.2%</b>
UTHSC-San Antonio	78,146,072	77,246,242	86,074,434	102,745,941	113,060,950	119,279,555	124,912,722	4.7%
UT M D Anderson Cancer Center	141,260,451	155,126,396	186,130,339	211,106,936	266,213,970	282,260,250	313,916,355	11.2%
UTHC-Tyler	7,588,544	8,256,219	8,402,408	9,228,568	8,914,191	9,600,063	10,240,390	6.7%
<b>Grand Total</b>	<b>\$559,754,168</b>	<b>\$594,086,569</b>	<b>\$701,944,130</b>	<b>\$781,991,952</b>	<b>\$909,081,323</b>	<b>\$980,122,458</b>	<b>\$1,055,242,797</b>	<b>7.7%</b>

## Research Expenditures by Sponsoring Agency 2005

Source

a Includes institution-wide activities that support academic functions not specific to any one school.

Kathy Jalufka  
Budget and Financial Reporting

These figures include direct and indirect costs, as well as appropriated and designated costs, for research expenditures only. They do not include expenditures for instruction, public service, academic support, student services, institutional support or scholarships and fellowships.

Unit	Sponsoring Agency Fiscal Year 2005						
	Total	Federal	State	Local	Private	Other Appropriated	Other Designated
Dental Branch	\$1,775,186	\$1,528,900	\$6,994		\$94,272		\$154,020
Graduate School of Biomedical Sciences	207,861		155,955		51,906		
School of Health Information Sciences	1,885,931	1,425,336			456,996		3,599
Medical School	94,636,291	66,750,105	5,110,395	14,836	17,399,853	1,146,752	4,214,350
School of Nursing	978,366	801,352	4,133		172,881		
School of Public Health	39,052,780	33,400,696	1,670,864	26,835	2,017,216	1,896,675	40,494
Harris County Psychiatric Center	65,616				65,616		
The Brown Foundation Institute of Molecular Medicine	7,596,255	3,050,211	2,714		2,577,546	1,965,784	
Academic Support Area <sup>a</sup>	8,090,710	5,552,604				2,426,751	111,355
<b>Grand Total</b>	<b>\$154,288,996</b>	<b>\$112,509,204</b>	<b>\$6,951,055</b>	<b>\$41,671</b>	<b>\$22,836,286</b>	<b>\$7,435,962</b>	<b>\$4,514,818</b>
<b>Percent of Total</b>		<b>72.9%</b>	<b>4.5%</b>	<b>0.1%</b>	<b>14.8%</b>	<b>4.8%</b>	<b>2.9%</b>

### 3 Grant Proposals by Unit and Type 2001-2005

Source

Catherine Moore  
Office of Sponsored Projects

Unit	Number of Proposals and Total Proposal Amount per fiscal year									
	2001	No.	2002	No.	2003	No.	2004	No.	2005	No.
<b>Dental Branch</b>										
Fellowship/Scholarship	\$31,500	8	\$4,800	2	\$330,874	4	\$42,400	2	\$37,400	3
Instruction	1,583,988	6	306,935	5	4,575,019	4	799,354	3	2,639,952	4
Research	14,611,756	68	15,915,485	77	16,718,953	84	19,592,685	76	8,901,216	40
Clinical Study									54,686	1
<b>DB Total</b>	<b>\$16,227,244</b>	<b>82</b>	<b>\$16,227,220</b>	<b>84</b>	<b>\$21,624,846</b>	<b>92</b>	<b>\$20,450,026</b>	<b>83</b>	<b>\$11,633,254</b>	<b>48</b>
<b>Graduate School of Biomedical Sciences</b>										
Fellowship/Scholarship	\$34,000	1								
Instruction	50,000	1	\$24,800	1	\$215,532	2	\$2,153,552	4	\$2,395,917	4
<b>GSBS Total</b>	<b>\$84,000</b>	<b>2</b>	<b>\$24,800</b>	<b>1</b>	<b>\$215,532</b>	<b>2</b>	<b>\$2,153,552</b>	<b>4</b>	<b>\$2,395,917</b>	<b>4</b>
<b>School of Health Information Sciences</b>										
Fellowship/Scholarship	\$9,300	1	\$68,645	2	\$226,927	6	\$90,213	4	\$65,343	3
Instruction	594,417	1	53,239	2	174,662	4	51,250	2	715,447	3
Research	12,970,859	14	9,516,573	20	14,787,638	32	32,162,964	49	42,025,697	47
Other							235,827	3	108,127	1
<b>SHIS Total</b>	<b>\$13,574,576</b>	<b>16</b>	<b>\$9,638,457</b>	<b>24</b>	<b>\$15,189,227</b>	<b>42</b>	<b>\$32,539,714</b>	<b>58</b>	<b>\$42,914,614</b>	<b>54</b>
<b>Medical School</b>										
Fellowship/Scholarship	\$1,236,371	33	\$1,303,658	27	\$1,114,387	34	\$2,255,710	43	\$1,305,944	27
Instruction	4,913,004	24	10,690,634	49	6,852,067	38	8,772,481	23	8,846,520	22
Research	323,992,196	517	304,099,677	508	470,039,625	579	441,245,635	596	493,397,355	567
Clinical Study							11,586,013	85	9,006,875	84
Other							2,047,004	30	6,423,401	31
<b>MS Total</b>	<b>\$330,141,571</b>	<b>574</b>	<b>\$316,093,969</b>	<b>584</b>	<b>\$15,189,227</b>	<b>651</b>	<b>\$465,906,843</b>	<b>777</b>	<b>\$518,980,095</b>	<b>731</b>
<b>School of Nursing</b>										
Fellowship/Scholarship	\$200,944	4	\$43,484	2	\$23,796	1	\$135,222	5	\$106,638	4
Instruction	5,318,321	7	4,715,610	11	5,918,114	14	4,851,280	15	4,250,298	8
Research	10,172,171	21	6,637,464	17	7,108,891	20	6,271,189	18	14,960,005	22
Clinical Study							625,933	1		
Other							386,029	2	6,1439	2
<b>SON Total</b>	<b>\$15,691,436</b>	<b>32</b>	<b>\$11,396,558</b>	<b>30</b>	<b>\$13,050,801</b>	<b>35</b>	<b>\$12,269,653</b>	<b>41</b>	<b>\$19,378,390</b>	<b>36</b>
<b>School of Public Health</b>										
Fellowship/Scholarship	\$271,723	3			\$27,580	1	\$639,214	5	\$38,561	4
Instruction	5,457,774	13	\$5,217,055	13	5,285,468	12	20,305,635	19	22,703,840	22
Research	167,242,337	199	170,872,650	215	170,826,907	232	265,411,249	291	167,331,764	286
Clinical Study									927,230	2
Other							634,219	6	1,672,281	8
<b>SPH Total</b>	<b>\$172,971,834</b>	<b>215</b>	<b>\$176,089,705</b>	<b>228</b>	<b>\$176,139,955</b>	<b>245</b>	<b>\$286,990,317</b>	<b>321</b>	<b>\$192,673,676</b>	<b>322</b>
<b>The Brown Foundation Institute of Molecular Medicine</b>										
Fellowship/Scholarship	\$40,036	1			\$537,668	3	\$486,632	5	\$1,583,000	5
Research	20,075,079	30	\$11,922,677	36	28,049,659	44	29,158,415	48	46,981,978	57
<b>IMM Total</b>	<b>\$20,115,115</b>	<b>31</b>	<b>\$11,922,677</b>	<b>36</b>	<b>\$28,587,327</b>	<b>47</b>	<b>\$29,645,047</b>	<b>53</b>	<b>\$48,564,978</b>	<b>62</b>
<b>Harris County Psychiatric Center</b>										
Instruction									\$669,150	1
Research			\$1,765,793	4						
Other							\$109,915	2	\$54,891	1
<b>HCPC Total</b>	<b>\$0</b>	<b>0</b>	<b>\$1,765,793</b>	<b>4</b>	<b>\$0</b>	<b>0</b>	<b>\$109,915</b>	<b>2</b>	<b>\$724,041</b>	<b>2</b>
<b>University Administration</b>										
Fellowship/Scholarship					\$1,288,461	1				
Instruction	\$1,159,840	2	\$2,892,871	6	70,800	4	\$908,640	4	\$54,994	2
Research	1,234,577	3	3,671,120	3	2,055,757	2	3,079,891	2	33,579,944	7
<b>UA Total</b>	<b>\$2,394,417</b>	<b>5</b>	<b>\$6,563,991</b>	<b>9</b>	<b>\$3,415,018</b>	<b>7</b>	<b>\$3,988,531</b>	<b>6</b>	<b>\$33,634,938</b>	<b>9</b>
<b>UTHSC-H Total</b>										
Fellowship/Scholarship	\$1,823,874	52	\$1,420,587	33	\$3,549,693	50	\$3,649,391	64	\$3,136,886	46
Instruction	19,077,344	52	23,901,144	87	23,091,662	78	37,842,192	70	42,276,118	65
Research	550,298,975	852	524,401,439	880	709,587,430	993	796,922,028	1,080	807,177,959	1,026
Clinical Study							12,227,533	88	9,988,791	87
Other							3,412,454	43	8,320,139	43
<b>Grand Total</b>	<b>\$571,200,193</b>	<b>956</b>	<b>\$549,723,170</b>	<b>1,000</b>	<b>\$736,228,785</b>	<b>1,121</b>	<b>\$854,053,598</b>	<b>1,345</b>	<b>\$870,899,893</b>	<b>1,267</b>

# Contract and Grant Awards by Unit and Type 2001-2005

Source

Note: Due to difficulty in retrieving contract data, FY 2003 figures reflect grant activity only.

Catherine Moore  
Office of Sponsored Projects

Unit	Number of Awards and Total Award Amount per fiscal year									
	2001		2002		2003		2004		2005	
Proposal	No.	No.	No.	No.	No.	No.	No.	No.	No.	No.
<b>Dental Branch</b>										
Fellowship/Scholarship	\$6,800	3	\$2,400	1	\$4,800	2	\$2,400	1	\$40,000	1
Instruction	320,138	6	1,981,008	10	647,943	3	752,340	3	1,292,822	3
Research	2,304,650	61	2,459,376	62	1,378,400	54	1,325,445	43	1,895,789	33
Clinical Study							15,588	2		
<b>DB Total</b>	<b>\$2,631,588</b>	<b>70</b>	<b>\$4,442,784</b>	<b>73</b>	<b>\$2,031,143</b>	<b>59</b>	<b>\$2,095,773</b>	<b>49</b>	<b>\$3,228,611</b>	<b>37</b>
<b>Graduate School of Biomedical Sciences</b>										
Fellowship/Scholarship	\$17,000	1	\$37,000	1	\$37,000	1				
Instruction	835,619	3	24,800	1	319,986	3	\$264,110	4	\$834,706	4
<b>GSBS Total</b>	<b>\$852,619</b>	<b>4</b>	<b>\$61,800</b>	<b>2</b>	<b>\$356,986</b>	<b>4</b>	<b>\$264,110</b>	<b>4</b>	<b>\$834,706</b>	<b>4</b>
<b>School of Health Information Sciences</b>										
Fellowship/Scholarship	\$9,300	1	\$137,125	3	\$110,983	5	\$110,213	5	\$65,343	3
Instruction	8,000	1	53,239	2	87,185	3	43,173	1	2,700	1
Research	795,349	7	1,141,252	13	1,159,802	11	1,642,721	24	2,106,140	19
Other							235,287	3	108,127	1
<b>SHIS Total</b>	<b>\$812,649</b>	<b>9</b>	<b>\$1,331,616</b>	<b>18</b>	<b>\$1,357,970</b>	<b>19</b>	<b>\$2,031,394</b>	<b>33</b>	<b>\$2,282,310</b>	<b>24</b>
<b>Medical School</b>										
Fellowship/Scholarship	\$451,943	16	\$593,961	19	\$534,914	17	\$613,880	19	\$585,966	14
Instruction	8,741,450	39	35,301,552	86	4,168,007	40	2,311,294	17	2,146,940	14
Research	80,826,336	440	100,936,734	540	83,199,850	346	81,400,864	334	87,147,805	344
Clinical Study							10,744,335	88	7,527,679	90
Other	228,219	5					1,268,940	16	4,724,682	31
<b>MS Total</b>	<b>\$90,247,948</b>	<b>500</b>	<b>\$136,832,247</b>	<b>645</b>	<b>\$87,902,771</b>	<b>403</b>	<b>\$96,339,313</b>	<b>474</b>	<b>\$102,133,072</b>	<b>493</b>
<b>School of Nursing</b>										
Fellowship/Scholarship	\$25,000	1	\$21,890	1	\$47,202	2	\$75,000	3	\$75,358	4
Instruction	1,047,926	6	1,115,327	8	782,325	6	\$1,328,530	12	1,121,951	11
Research	1,840,973	16	1,583,786	10	1,086,572	10	1,023,116	8	1,713,329	11
Other							404,589	4	438,623	3
<b>SON Total</b>	<b>\$2,913,899</b>	<b>23</b>	<b>\$2,721,003</b>	<b>19</b>	<b>\$1,916,099</b>	<b>18</b>	<b>\$2,831,235</b>	<b>27</b>	<b>\$3,349,261</b>	<b>29</b>
<b>School of Public Health</b>										
Fellowship/Scholarship	\$56,402	2			\$27,580	1	\$129,911	1	\$39,957	2
Instruction	3,023,633	20	\$2,302,116	12	3,033,640	8	4,119,459	19	3,600,372	13
Research	42,112,585	136	33,072,368	125	36,485,655	124	40,532,706	137	46,431,935	165
Clinical Study							737,100	1	867,230	2
Other	225,000	1					437,972	6	1,897,107	6
<b>SPH Total</b>	<b>\$45,417,620</b>	<b>159</b>	<b>\$35,374,484</b>	<b>137</b>	<b>\$39,516,875</b>	<b>133</b>	<b>\$45,957,148</b>	<b>164</b>	<b>\$52,836,601</b>	<b>188</b>
<b>The Brown Foundation Institute of Molecular Medicine</b>										
Fellowship/Scholarship	\$43,772	1					\$23,233	1		
Research	1,976,051	11	\$3,245,918	17	\$4,045,742	21	3,163,119	17	\$3,004,554	17
Other	82,627	1								
<b>IMM Total</b>	<b>\$2,102,450</b>	<b>13</b>	<b>\$3,245,918</b>	<b>17</b>	<b>\$4,045,742</b>	<b>21</b>	<b>\$3,186,352</b>	<b>18</b>	<b>\$3,004,554</b>	<b>17</b>
<b>Harris County Psychiatric Center</b>										
Research			\$80,000	2	\$55,000	1	\$177,490	2		
Other							109,915	1		
<b>HCPC Total</b>			<b>\$80,000</b>	<b>2</b>	<b>\$55,000</b>	<b>1</b>	<b>\$287,405</b>	<b>3</b>	<b>\$0</b>	<b>0</b>
<b>University Administration</b>										
Instruction	\$695,213	3	\$1,019,600	3	\$350,877	4			\$25,000	1
Research	30,100	1	6,250,000	3			\$27,034	2	\$8,894,500	2
Other	48,000	1					250,000	1		
<b>UA Total</b>	<b>\$725,313</b>	<b>5</b>	<b>\$7,269,600</b>	<b>6</b>	<b>\$350,877</b>	<b>4</b>	<b>\$277,034</b>	<b>3</b>	<b>\$8,819,500</b>	<b>3</b>
<b>UTHSC-H Total</b>										
Fellowship/Scholarship	\$610,217	25	\$1,811,976	25	\$1,113,356	32	\$981,671	32	\$806,624	25
Instruction	14,671,979	78	40,778,041	122	9,009,086	63	9,068,906	57	9,024,491	48
Research	129,886,044	672	148,769,434	772	127,411,021	567	129,112,971	564	151,194,052	589
Clinical Study							11,649,513	92	8,394,909	92
Other	583,846	8					2,456,703	30	7,168,539	41
<b>Grand Total</b>	<b>\$145,752,086</b>	<b>783</b>	<b>\$191,359,452</b>	<b>919</b>	<b>\$137,533,463</b>	<b>662</b>	<b>\$153,269,764</b>	<b>775</b>	<b>\$176,588,615</b>	<b>795</b>

### 3 Contract and Grant Awards by Source 2001-2005

Source

Note: Due to difficulty in retrieving contract data, FY 2003 figures reflect grant activity only.

Catherine Moore  
Office of Sponsored Projects

<b>Unit</b>										
<b>Number of Awards and Total Award Amount per fiscal year</b>										
Source	2001	No.	2002	No.	2003	No.	2004	No.	2005	No.
<b>Dental Branch</b>										
Federal	\$2,280,107	22	\$2,221,773	19	\$1,783,112	16	\$1,872,760		\$3,041,482	19
State	93,163	1	299,156	1					5,000	1
Local							3,200			
Private	258,318	47	1,921,855	53	248,031	43	219,843		182,129	17
<b>DB Total</b>	<b>\$2,631,588</b>	<b>70</b>	<b>\$4,442,784</b>	<b>73</b>	<b>\$2,031,143</b>	<b>59</b>	<b>\$2,095,773</b>	<b>49</b>	<b>\$3,228,611</b>	<b>37</b>
<b>Graduate School of Biomedical Sciences</b>										
Federal	\$50,000	1	\$24,800	1	\$319,986	3	\$264,110		\$834,706	4
State										
Private	802,619	3	37,000	1	37,000	1				
<b>GSBS Total</b>	<b>\$852,619</b>	<b>4</b>	<b>\$61,800</b>	<b>2</b>	<b>\$356,986</b>	<b>4</b>	<b>\$264,110</b>	<b>4</b>	<b>\$834,706</b>	<b>4</b>
<b>School of Health Information Sciences</b>										
Federal	\$804,649	8	\$1,253,653	15	\$1,154,867	11	\$1,375,461		\$2,007,179	16
State										
Local							20,000			
Private	8,000	1	77,963	3	203,103	8	635,933		275,131	8
<b>SHIS Total</b>	<b>\$812,649</b>	<b>9</b>	<b>\$1,331,616</b>	<b>18</b>	<b>\$1,357,970</b>	<b>19</b>	<b>\$2,031,394</b>	<b>33</b>	<b>\$2,282,310</b>	<b>24</b>
<b>Medical School</b>										
Federal	\$65,507,287	265	\$83,282,993	366	\$82,345,020	319	\$71,625,492		\$79,282,444	291
State	3,891,074	15	1,249,515	11	897,841	4	8,103,371		7,656,380	8
Local	163,875	2					217,500		50,000	1
Private	20,685,713	218	52,299,739	268	4,659,910	80	16,392,950		15,144,248	193
<b>MS Total</b>	<b>\$90,247,949</b>	<b>500</b>	<b>\$136,832,247</b>	<b>645</b>	<b>\$87,902,771</b>	<b>403</b>	<b>\$96,339,313</b>	<b>474</b>	<b>\$102,133,072</b>	<b>493</b>
<b>School of Nursing</b>										
Federal	\$2,815,808	17	\$2,304,254	11	\$1,755,099	13	\$2,443,967		\$2,535,952	22
State			46,947	1			202,611		502,378	3
Local										
Private	98,091	6	369,802	7	161,000	5	184,657		310,931	4
<b>SON Total</b>	<b>\$2,913,899</b>	<b>23</b>	<b>\$2,721,003</b>	<b>19</b>	<b>\$1,916,099</b>	<b>18</b>	<b>\$2,831,235</b>	<b>27</b>	<b>\$3,349,261</b>	<b>29</b>
<b>School of Public Health</b>										
Federal	\$39,683,137	126	\$34,337,785	116	\$38,113,134	124	\$43,602,760		\$49,020,708	154
State	3,070,188	14	272,871	4	1,231,151	2	793,620		1,267,807	9
Local	5,587	1	5,417	2	20,000	1	40,000			
Private	2,658,708	18	758,411	15	152,590	6	1,520,768		2,548,086	25
<b>SPH Total</b>	<b>\$45,417,620</b>	<b>159</b>	<b>\$35,374,484</b>	<b>137</b>	<b>\$39,516,875</b>	<b>133</b>	<b>\$45,957,148</b>	<b>164</b>	<b>\$52,836,601</b>	<b>188</b>
<b>The Brown Foundation Institute of Molecular Medicine</b>										
Federal	\$1,627,823	7	\$3,163,918	15	\$3,851,742	17	\$3,036,919		\$2,521,783	9
State										
Private	474,627	6	82,000	2	194,000	4	149,433		482,771	8
<b>IMM Total</b>	<b>\$2,102,450</b>	<b>13</b>	<b>\$3,245,918</b>	<b>17</b>	<b>\$4,045,742</b>	<b>21</b>	<b>\$3,186,352</b>	<b>18</b>	<b>\$3,004,554</b>	<b>17</b>

Unit	Number of Awards and Total Award Amount per fiscal year									
	2001		2002		2003		2004		2005	
Source	No.	No.	No.	No.	No.	No.	No.	No.	No.	No.
<b>Harris County Psychiatric Center</b>										
Private			\$80,000	2	\$55,000	1	\$287,405			
<b>HCPC Total</b>			<b>\$80,000</b>	<b>2</b>	<b>\$55,000</b>	<b>1</b>	<b>\$287,405</b>	<b>3</b>	<b>\$0</b>	<b>0</b>
<b>University Administration</b>										
Federal	\$695,213	3	\$6,269,600	5	\$335,877	3	\$257,020		\$8,882,000	2
State	30,100	1	1,000,000	1						
Private	48,000	1			15,000	1	20,014		37,500	1
<b>UA Total</b>	<b>\$773,313</b>	<b>5</b>	<b>\$7,269,600</b>	<b>6</b>	<b>\$350,877</b>	<b>4</b>	<b>\$277,034</b>	<b>3</b>	<b>\$8,919,500</b>	<b>3</b>
<b>UTHSC-H Total</b>										
Federal	\$113,464,024	449	\$132,858,776	548	\$129,658,837	506	\$124,478,459		\$148,126,254	517
State	7,084,524	31	2,868,489	18	2,128,992	6	9,099,602		9,431,565	21
Local	169,462	3	5,417	2	20,000	1	280,700		50,000	1
Private	25,034,076	300	55,626,770	351	5,725,634	149	19,411,003		18,980,796	256
<b>Grand Total</b>	<b>\$145,752,086</b>	<b>783</b>	<b>\$191,359,452</b>	<b>919</b>	<b>\$137,533,463</b>	<b>662</b>	<b>\$153,269,764</b>	<b>775</b>	<b>\$176,588,615</b>	<b>795</b>

## Intellectual Property Activity 1996-2005

Source

Bruce Butler  
Office of Technology Management

Note: activities and data are restated from previous years.

Activity	Amount per fiscal year									
	1996	1997	1998	1999	2000	2001	2002	2003	2004	2005
Invention disclosures	10	7	14	25	27	36	44	69	44	49
New US patent applications filed	10	14	18	25	40	30	44	30	23	20
Licenses & options executed	2	2	2	8	4	9	9	23	27	36
Licenses & options generating income	7	6	7	9	14	14	20	25	41	48
US patents issued	6	3	7	6	1	10	5	12	12	6
Start-up companies formed						2	1	1	1	
<b>Royalty income (Patents, copyrights, trademarks, &amp; software)</b>										
<b>Grand Total</b>	<b>\$811,314</b>	<b>\$358,605</b>	<b>\$388,435</b>	<b>\$368,124</b>	<b>\$715,979</b>	<b>\$857,051</b>	<b>\$1,425,920</b>	<b>\$1,219,696</b>	<b>\$2,270,441</b>	<b>\$3,484,772</b>

### 3 Principal Investigators by Unit 1996-2005

Source  
Catherine Moore  
Office of Sponsored Projects

Unit	Investigators per fiscal year as of September 1									
	1996	1997	1998	1999	2000	2001	2002	2003	2004	2005
Dental Branch	36	34	31	27	24	23	23	25	22	21
Graduate School of Biomedical Sciences	2	2	1	1	1	2	2	2	2	2
School of Health Information Sciences				2	5	7	8	13	15	12
Medical School	274	271	319	305	296	237	241	239	257	259
School of Nursing	21	27	26	27	28	23	23	21	23	21
School of Public Health	66	66	66	68	80	75	70	73	79	89
Houston Recovery Campus	1	2								
The Brown Foundation Institute of Molecular Medicine	2	6	9	7	6	6	8	11	13	13
Harris County Psychiatric Center							2	2	3	2
University Administration	3	3	4	3	3	3	3	3	3	5
<b>Grand Total</b>	<b>405</b>	<b>411</b>	<b>456</b>	<b>440</b>	<b>443</b>	<b>376</b>	<b>380</b>	<b>389</b>	<b>417</b>	<b>424</b>

### Ratio of Federal Funds to State Appropriated Funds 2004

Source  
*Research Expenditures: Texas Public Universities and Health-related Institutions*  
Texas Higher Education Coordinating Board,  
April 2005

This table represents the relationship between federal and state research dollars leveraged in FY 2004 by select public institutions of higher education in Texas. UTHSC-H, ranked third in this category, receiving \$9.37 in federal research dollars for every \$1.00 in state funds.

Since the Texas Higher Education Coordinating Board's deadline for the receipt of FY 2005 data is after the press deadline for *Fact Book 2006*, we will report FY 2005 activity in *Fact Book 2007*.

School	Activity Fiscal Year 2004		
	Total Exp Rank	Ratio of Fed/St Exp	Ratio Rank
UTHSC-San Antonio	7	14.72	1
UTSWMC-Dallas	4	11.07	2
<b>UTHSC-H</b>	<b>5</b>	<b>9.37</b>	<b>3</b>
UTMB-Galveston	6	6.75	4
UT Austin	2	4.75	5
Texas A&M University System HSC	10	2.32	6
UT M D Anderson Cancer Center	3	1.57	7
Texas A&M University	1	1.48	8
University of Houston	8	1.10	9
Texas Tech University	9	1.01	10

# NIH Awards by Unit 1996-2005

Sources  
Catherine Moore  
Office of Sponsored Projects

After FY 1995, faculty were no longer assigned to the Graduate School of Biomedical Sciences (GSBS). Instead, those faculty are counted in their schools of appointment and any awards are counted there as well. Please refer to the GSBS faculty affiliation table on page 50.

Unit	Number of Awards and Total Award Amount per fiscal year									
	1996	No.	1997	No.	1998	No.	1999	No.	2000	No.
Dental Branch	\$1,361,719	11	\$794,755	7	\$572,491	4	\$1,055,051	5	\$1,517,506	10
Graduate School of Biomedical Sciences										
School of Health Information Sciences									198,968	2
Medical School	29,573,361	153	35,534,660	162	40,375,275	181	49,758,704	190	51,069,163	204
School of Nursing	579,624	3	444,292	2	919,941	5	292,394	2	611,362	3
School of Public Health	23,350,658	40	27,326,932	31	27,500,682	35	18,567,760	30	15,716,625	39
The Brown Foundation Institute of Molecular Medicine	362,261	2	921,240	5	871,659	8	988,113	8	942,131	7
University Administration									147,398	1
<b>Grand Total</b>	<b>\$55,227,623</b>	<b>209</b>	<b>\$65,021,879</b>	<b>207</b>	<b>\$70,240,048</b>	<b>233</b>	<b>\$70,662,022</b>	<b>235</b>	<b>\$70,203,153</b>	<b>266</b>

Unit	Number of Awards and Total Award Amount per fiscal year									
	2001	No.	2002	No.	2003	No.	2004	No.	2005	No.
Dental Branch	\$1,578,533	10	\$1,700,099	11	\$1,407,596	7	\$1,601,761	8	\$1,995,126	9
Graduate School of Biomedical Sciences					296,126	2	209,946	1	805,134	3
School of Health Information Sciences	476,528	4	364,079	4	648,076	4	539,952	5	1,354,437	6
Medical School	57,286,170	202	59,475,024	223	60,468,833	193	51,232,842	174	52,388,776	157
School of Nursing	1,103,378	5	1,209,443	5	935,487	5	900,416	3	1,033,775	5
School of Public Health	28,844,089	40	19,872,491	39	24,075,042	41	26,897,582	45	22,061,348	34
The Brown Foundation Institute of Molecular Medicine	1,020,414	6	2,980,985	13	3,640,432	14	2,812,686	11	1,657,139	6
University Administration	695,213	3	6,250,000	3	300,077	1	250,000	1		
<b>Grand Total</b>	<b>\$91,004,325</b>	<b>270</b>	<b>\$91,852,121</b>	<b>298</b>	<b>\$91,771,669</b>	<b>267</b>	<b>\$84,445,165</b>	<b>248</b>	<b>\$81,295,735</b>	<b>220</b>

### 3 Federal Awards by Agency 1996-2005

Source  
Catherine Moore  
Office of Sponsored Projects

Federal Agency	Number of Awards and Total Award Amount per fiscal year									
	1996	No.	1997	No.	1998	No.	1999	No.	2000	No.
Public Health Service	\$64,590,498	301	\$76,377,24	313	\$82,921,624	334	\$81,334,444	337	\$83,777,509	404
NASA	774,614	11	1,355,909	15	779,149	15	812,157	16	1,275,141	19
National Science Foundation	252,220	3	174,705	2	289,205	7	235,700	5	1,349,891	6
USDA	311,344	2	317,448	3						
Other Federal	1,882,728	16	1,740,073	16	8,231,935	16	2,179,071	29	6,459,459	22
<b>Grand Total</b>	<b>\$67,811,404</b>	<b>333</b>	<b>\$79,965,384</b>	<b>349</b>	<b>\$92,221,913</b>	<b>372</b>	<b>\$84,561,372</b>	<b>387</b>	<b>\$92,862,000</b>	<b>451</b>

Federal Agency	Number of Awards and Total Award Amount per fiscal year									
	2001	No.	2002	No.	2003	No.	2004	No.	2005	No.
Public Health Service	\$108,939,182	412	\$119,319,280	489	\$116,318,339	449	\$116,165,219	438	\$123,836,301	458
NASA	769,941	10	1,100,811	14	876,971	13	1,086,853	15	636,593	11
National Science Foundation	1,724,755	4	3,828,890	7	850,515	6	239,672	4	867,466	8
USDA	20,894	3			60,800	3	150,000	1	2,609,999	2
Other Federal	2,009,252	20	8,609,795	38	11,552,212	35	6,836,715	29	20,175,895	38
<b>Grand Total</b>	<b>\$113,464,024</b>	<b>449</b>	<b>\$132,858,776</b>	<b>548</b>	<b>\$129,658,837</b>	<b>506</b>	<b>\$124,478,459</b>	<b>487</b>	<b>\$148,126,254</b>	<b>517</b>

### Sponsored Project Activity Report 2005

Source  
Kathy Jalufka  
Budget and Financial Reporting

a Includes Health Science Center - General and UT Harris County Psychiatric Center.

Sponsored project activities include research, instruction, public service, academic support, student support, scholarships and fellowships. Extramural fund sources include federal, state, local and private funds. This table represents amounts that were expended, not awarded.

Unit	Activity Fiscal Year 2005		
	Total	Direct Costs	Indirect Costs
Dental Branch	\$4,505,172	\$3,997,046	\$508,126
Graduate School of Biomedical Sciences	1,904,589	1,885,867	18,722
School of Health Information Sciences	2,134,542	1,743,982	390,560
Medical School	100,304,106	79,915,954	20,388,152
School of Nursing	4,741,869	4,367,793	374,076
School of Public Health	41,745,362	32,200,472	9,544,890
The Brown Foundation Institute of Molecular Medicine	5,864,266	4,871,425	992,841
Other <sup>a</sup>	10,753,158	8,727,261	2,025,897
<b>Grand Total</b>	<b>\$171,953,064</b>	<b>\$137,709,800</b>	<b>\$34,243,264</b>

# Comparison of NIH Award Recipients 1995-2004

Sources

National Institutes of Health (NIH),  
Division of Research Grants, Extramural Awards  
to Domestic Higher Education Institutions,  
FY 2004

Includes all higher education institutions that received support from the National Institutes of Health.  
There were 532 rankings in FY 2004.

All grant applications to the NIH are subject to a rigorous peer-review process. Because of this and because the NIH is the major funding source for biomedical research, success in obtaining basic science and clinical funding from NIH is an important measure of the quality of an institution and its faculty. Competition for NIH funding has increased dramatically in the past decade, and the health science center's ranking relative to similar institutions is an indicator of the university's growth in research quality. Since the ranking system used in this survey takes into account total NIH dollars received, institutions with large numbers of faculty tend to rank higher than those with fewer faculty. Given the small number of faculty relative to some of the other universities in this survey, the health science center fares well in this comparison.

School	Ranking and Total Award Amount per fiscal year									
	1995	No.	1996	No.	1997	No.	1998	No.	1999	No.
UTSWMC-Dallas	\$74,636,279	30	\$82,900,672	27	\$86,496,266	28	\$88,310,597	35	\$101,887,378	30
UTMB-Galveston	34,053,556	68	38,423,580	63	42,687,568	61	46,259,463	69	49,933,017	61
<b>UTHSC-H</b>	<b>47,991,312</b>	<b>42</b>	<b>63,809,470</b>	<b>49</b>	<b>63,102,838</b>	<b>40</b>	<b>68,918,421</b>	<b>46</b>	<b>62,410,846</b>	<b>52</b>
UTHSC-San Antonio	48,456,959	44	50,733,995	48	43,130,751	59	47,697,587	68	48,046,980	63
UT M D Anderson	46,338,494	49	53,750,119	50	56,996,394	47	64,114,714	52	76,695,258	40
Baylor College of Medicine	83,098,433	21	90,895,535	24	94,479,287	23	114,645,526	22	149,449,455	19

School	Ranking and Total Award Amount per fiscal year									
	2000	No.	2001	No.	2002	No.	2003	No.	2004	No.
UTSMC-Dallas	\$123,596,113	25	\$144,796,898	26	\$161,988,879	24	\$174,089,840	28	\$172,246,995	27
UTMB-Galveston	60,874,122	60	62,865,760	63	74,503,364	59	203,486,399	23	105,156,283	51
<b>UTHSC-H</b>	<b>79,440,110</b>	<b>46</b>	<b>83,903,275</b>	<b>50</b>	<b>90,4522,17</b>	<b>53</b>	<b>89,956,123</b>	<b>56</b>	<b>80,515,380</b>	<b>62</b>
UTHSC-San Antonio	62,325,558	58	65,997,423	59	74,477,008	60	82,295,826	61	88,457,846	56
UT M D Anderson	86,646,639	41	101,528,355	39	112,451,254	40	132,630,586	39	145,157,751	39
Baylor College of Medicine	169,294,366	18	221,611,093	15	263,540,460	14	249,559,238	17	248,951,313	19

### 3 Journal Publications 2001-2003

Source  
Melissa Proll  
Office of Research

Science Citation Index Expanded (SCI EXPANDED) – 1975-2004, Institute of Scientific Information, Philadelphia, PA

Note: The Office of Research is currently working to better update and maintain this information. Please refer to their Web site ([www.uth.tmc.edu/research/](http://www.uth.tmc.edu/research/)) for more current data as it becomes available.

School		Publications Fiscal Year 2001					
	Total	Articles	Abstracts	Tech Notes	Letters	Editorials	Other
Dental Branch	33	28	2				3
Graduate School of Biomedical Sciences	2	1	1				
School of Health Information Sciences	3	3					
Medical School	789	498	206		23	35	24
School of Nursing	11	8	3				
School of Public Health	164	129	26		3	2	4
Other UTHSC-H faculty	35	19	14				2
<b>Grand Total</b>	<b>1,034</b>	<b>686</b>	<b>252</b>	<b>0</b>	<b>26</b>	<b>37</b>	<b>33</b>

School		Publications Fiscal Year 2002					
	Total	Articles	Abstracts	Tech Notes	Letters	Editorials	Other
Dental Branch	255	124	111		2		18
Graduate School of Biomedical Sciences	8	3	5				
School of Health Information Sciences	19	11	8				
Medical School	849	633	122		31	33	30
School of Nursing	38	15	18				5
School of Public Health	269	130	110		8	15	6
Other UTHSC-H faculty	40	19	10		3	2	6
<b>Grand Total</b>	<b>1,478</b>	<b>935</b>	<b>384</b>	<b>0</b>	<b>44</b>	<b>50</b>	<b>65</b>

School		Publications Fiscal Year 2003					
	Total	Articles	Abstracts	Tech Notes	Letters	Editorials	Other
Dental Branch	124	108	11		1	1	3
Graduate School of Biomedical Sciences	21	15	3			1	2
School of Health Information Sciences	30	27				1	2
Medical School	1,379	1,090	483		44	41	81
School of Nursing	39	18	13		4	1	3
School of Public Health	276	222	43		3		8
The Brown Foundation Institute of Molecular Medicine	68	37	27			3	1
Other UTHSC-H faculty	26	10	16				
<b>Grand Total</b>	<b>2,323</b>	<b>1,527</b>	<b>596</b>	<b>0</b>	<b>52</b>	<b>48</b>	<b>100</b>