
Mission & Vision Statements

Excellence Above All

Organization

The University of Texas Health Science Center at Houston was created by The University of Texas System Board of Regents and supported by the Texas Legislature in 1972. Located in the world renowned Texas Medical Center, it brings together a dental school (established in 1905), a graduate school of biomedical sciences (1963), a medical school (1969), a school of public health (1969), a school of nursing (1972), a school of health information sciences (1997), a psychiatric center (1986) and an institute of molecular medicine for the prevention of human diseases (1995). The university pursues its mission through a comprehensive approach to health.

Mission

As a comprehensive health science university, the mission of The University of Texas Health Science Center at Houston is to educate health science professionals, discover and translate advances in the biomedical and social sciences, and model the best practices in clinical care and public health.

We pursue this mission in order to advance the quality of human life by enhancing the diagnosis, treatment, and prevention of disease and injury, as well as promoting individual health and community well-being.

Vision

“Excellence above all” in the quest to be an acknowledged leader in the collaboration to treat, cure and prevent the most common diseases of our time through education, research and clinical practice.

The University of Texas Health Science Center at Houston aspires to be a leader in the collaboration to treat, prevent, and cure the most common diseases of our time by:

- + *Utilizing the distinctive capabilities of its schools, clinics, institutes and centers;*
- + *Collaborating with colleagues in the University of Texas System, the Texas Medical Center and throughout the world;*
- + *Being an academic health science center that is nationally and internationally recognized in teaching, research and service;*
- + *Serving as a home for the visionaries and scholars who will lead the way in defining and creating the future of the health sciences; and*
- + *Providing a diverse work environment that is ethically-based, service-oriented and community-sensitive.*

1a By the Numbers: The UT Health Science Center at Houston 2008

The most comprehensive academic health center in Texas educates and trains health professionals and biomedical scientists, conducts cutting edge biomedical, behavioral and population research and provides both primary care and highly specialized medical, dental and public health care and expertise.

- + 1 component of The University of Texas System.
- + **3,775** student enrollment.
- + **1,322** faculty.
- + **3,115** staff.
- + **\$725.3** million operating budget in FY 2008.
- + **\$126.8** million in un-reimbursed patient care provided to medically and financially indigent citizens of Harris County in 2008.
- + **30,270** graduates since 1972.
- + **3.7** million assignable square feet occupied in **45** buildings and leased facilities throughout the Texas Medical Center and the greater Houston area.
- + Over **790** grant-funded research projects in progress at any given time.
- + **1** Nobel Prize winner.
- + **3** members of the National Academy of Sciences.
- + **5** members of the Institute of Medicine.
- + **3** members of the American Academy of Arts and Sciences.
- + **12** members of the American Academy of Nursing.
- + **32** members of the International Association of Dental Research.
- + **2** members of the American College of Medical Informatics.
- + **\$100.1** million endowment (book value).
- + **\$2.2** billion annual indirect economic impact on the Houston metropolitan region.

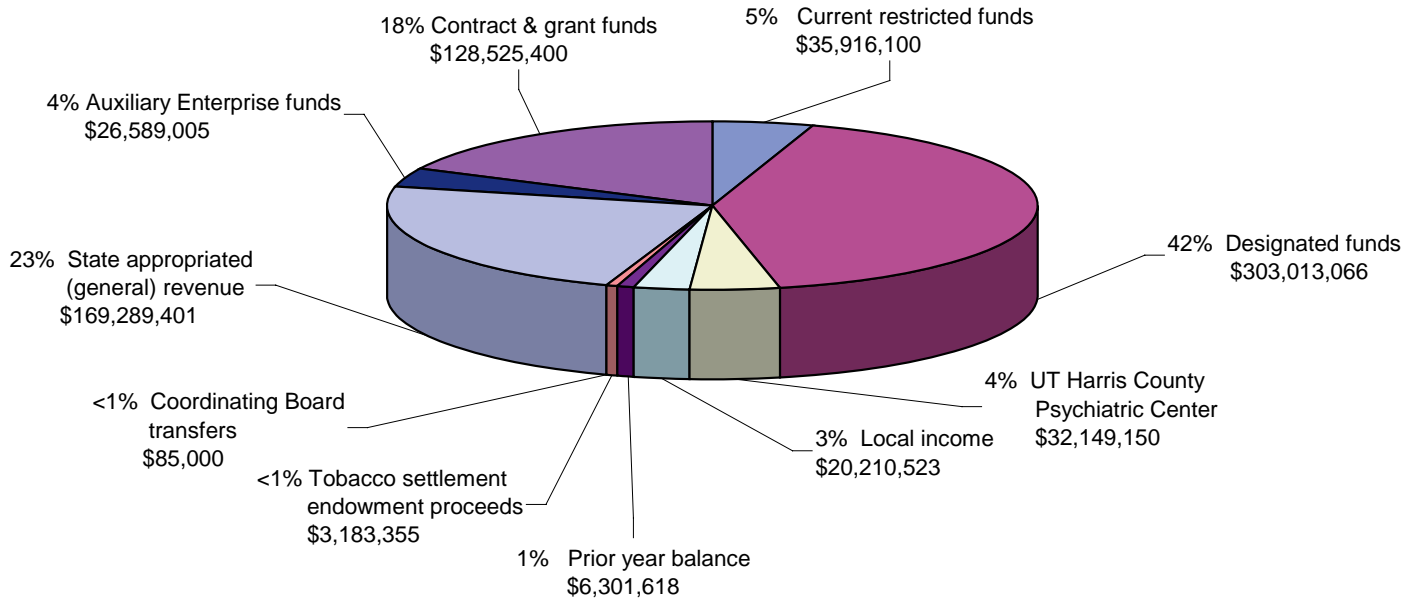
- In 2008:**
- + **3,775** students enrolled in **19** degree and certificate programs at **6** UTHSC-H schools located within the Texas Medical Center and at 4 regional campuses.
 - + Students participated in clinical training at over **200** affiliated sites across the Houston metropolitan area and across Texas.
 - + **958** students received degrees from UTHSC-H and began careers as health professionals and biomedical scientists.
 - + Researchers conducted research expending **\$191.7** million in sponsored research dollars and submitted **1,127** proposals for new research funding.
 - + Clinicians trained nearly **900** medical and dental residents as they delivered care in more than **60** outpatient and inpatient sites, reflecting more than **1** million patient encounters.

Student enrollment for Fall 2007

School	Enrollment
Dental Branch	452
Graduate School of Biomedical Sciences	578
School of Health Information Sciences	80
Medical School	935
School of Nursing	771
School of Public Health	959
Total students	3,775

FY 2008 Total Operating Budget by Revenue Sources

FY 2008 Total operating budget = \$725.3 million



1a Institutional Profile

Sources

UTHSC-H school catalogs
Fact Book 2008 data

In the mid 1940's a quiet transformation was taking place in a small area within the city of Houston. The resulting Texas Medical Center changed the face of Houston and the state of Texas forever. While watching this developing medical synergy, a committee of representatives from The University of Texas (UT) System decided to take action. As the Texas Medical Center became a world renowned medical center, the face of medical education within its boundaries was also gaining a reputation. Today what started as a committee proposal in the mid 1960's has become the most comprehensive of the six health institutions in the UT System, The University of Texas Health Science Center at Houston.

Since the health science center's creation by the UT Board of Regents and endorsement by the Texas Legislature in 1972, it stretched the boundaries of academic medicine and the medical education frontier by becoming a health science center with a character and scope different from any other in Texas. Innovative teaching environments within the six academic schools have brought the health science center's scope into extensive research opportunities, comprehensive patient care and community service. This comprehensive environment brings together researchers from the different disciplines to explore and find prevention models for some of the most difficult diseases of this century.

The core of the health science center's strength is its eight academic and operating units:

- + Dental Branch
- + Graduate School of Biomedical Sciences
- + School of Health Information Sciences
- + Medical School
- + School of Nursing
- + School of Public Health
- + Harris County Psychiatric Center
- + The Brown Foundation Institute of Molecular Medicine for the Prevention of Human Diseases

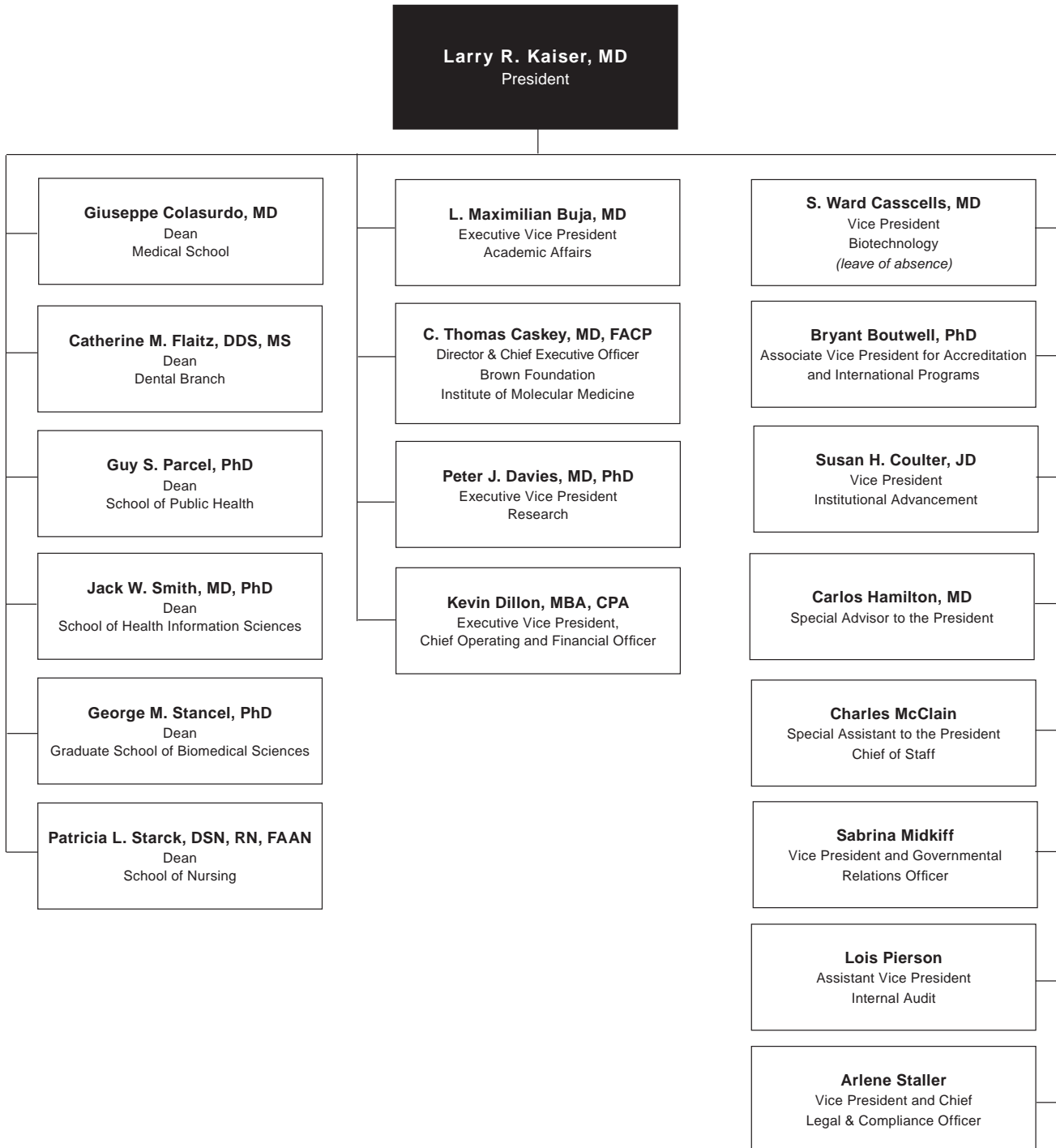
The health science center is characterized by consolidation and growth in all dimensions through the combination of biomedical sciences, social sciences and behavioral sciences, with influences from the humanities in the kind of interdisciplinary activities that are part of the fundamental definition of a modern academic health science center. These interdisciplinary activities enable faculty and staff to place special emphasis on complex ethical, economic, socio-behavioral, scientific and clinical questions related to health. They also provide opportunities for clinicians and scientists to engage in clinical and translational research designed to take scientific discoveries from the lab to the patient's bedside.

To continue this collaborative spirit, the university maintains close ties with many Texas Medical Center institutions as well as Rice University, the University of Houston (both the main campus and the downtown campus), Texas Southern University, Prairie View A&M University, UT-Pan American and UT-El Paso, to name a few.

Now in our 36th year, the health science center will continue its emphasis on teaching, research, patient care and community service to the large and diverse community of the greater Houston area and to the State of Texas. We will also maintain focus on the relationships among basic biomedical and behavioral research, direct patient care and health services, preventive services and public education. This focus will enable us to continue to fulfill our obligation to train and educate health professionals and biomedical scientists for the state in a setting that combines clinical and didactic teaching with excellent research.

In the academic year 2008, the health science center community includes more than 9,000 members (4,437 faculty and staff, 3,775 students, 797 medical residents, 89 dental residents/postgraduate students and approximately 200 fellows.)

Source
Charles W. McClain
President's Office



1a Dental Branch

Dean Catherine Flaitz, DDS, MS
Administrative and departmental offices are located at:
Dental Branch Building
6516 M D Anderson Boulevard
Houston, Texas 77030

Source
John Valenza
Dental Branch

Mission, Vision and History

Since its inception The University of Texas Dental Branch at Houston has set the standard for oral health excellence through its focus on education - training the best dentists, research - discovering new oral health advancements, and service - caring for the citizens of Southeast Texas.

In 2007 the Dental Branch advanced its effort to raise funds for a state-of-the-art dental school in the Texas Medical Center that could support the expanded needs of oral health and the growing vision of the administration. This \$143 million initiative, *Open To Health*, is more than halfway there with \$78 million in hand, thanks to \$60 million in state Tuition Revenue Bonds and \$18 million in UT System Permanent University Funds. This effort will not only fund the construction of the new building, but also create new resources for research, teaching and community service. The school's vision for the future takes oral health out of the mouth and into every facet of the health sciences including information technology, diagnostics, stem cell research, and public health. The Dental Branch has evolved exponentially from the small pioneering institution that was founded in 1905. As the first professional school in Houston and the first dental school in Texas, the Dental Branch has always occupied a unique place in history. It has remained Houston's only dental school, even as the city has grown to become the fourth largest in the country. From 1905 through 1943 the school reopened its doors as The University of Texas School of Dentistry - later renamed The University of Texas Dental Branch at Houston. In 1945, the UT System Board of Regents authorized the creation of the School of Dental Hygiene as part of the Dental Branch and the first hygiene class was admitted in 1955, the same year the current building was completed.

Fulfilling the mission - Education

The Dental Branch offers ten accredited programs in primary care and dental specialties using a broad-based competency driven curricula and extensive outcomes assessment evaluation. Ongoing curricula development emphasizes evidence-based dentistry and building skills for life-long learning.

In response to the state's need for oral healthcare providers and an increase in the number of highly-qualified applicants, the Dental Branch increased its class size during the 2005 and 2006 academic years. Annual admissions rose from 64 to 84, a 31% increase. With the new Dental Branch building, the continuation of a robust applicant pool, and the recruitment of additional outstanding faculty, further growth in class size is anticipated to meet the oral health needs of Texans.

Because community service is an important part of the school's mission, administrators believe that the student body should be as diverse as the community it serves. The Dental Branch has integrated a focus on cultural competency, diversity and inclusion built on the foundation of the American Medical Student Association's Achieving Diversity in Dentistry and Medicine guidelines into all four years of the undergraduate dental curriculum. This focus is supported by two recently established programs. The first, the Dental Branch Hispanic Center of Excellence (HCOE) will enhance and expand faculty and dental student research expertise on Hispanic and other under-represented minority health issues through resources to educate and promote such research. Second, the Robert Wood Johnson Foundation Summer Medical and Dental Education Program provides intensive and personalized training opportunities for pre-dental and medical students as a preparatory program to ultimately increase the number of under-represented and minority health care practitioners in Texas. As the only dental school in southeast Texas, a top priority of the Dental Branch is to retain its pivotal role as a primary source of quality oral health care to low income families and the traditionally underserved.

Fulfilling the mission - Research

Research brings about progress and advancement that changes and saves lives. Dental Branch faculty members are investigating:

- saliva as a diagnostic tool using proteomic analysis
- mechanisms of autoimmune disease
- mechanisms of mucosal immunity
- advanced imaging for craniofacial anomalies
- molecular imaging of oral cavity and other cancers
- oral manifestations of HIV infection

The Dental Branch has a strong commitment to building the workforce of oral health scientists for the 21st century. Funded by a National Institutes of Health comprehensive research training grant, UT-TORCH, has five tracks for specialized research training in oral health research including opportunities for current faculty to pursue advanced research degrees and short-term training, support for DDS/PhD students as well as pre-and post-doctoral fellows.

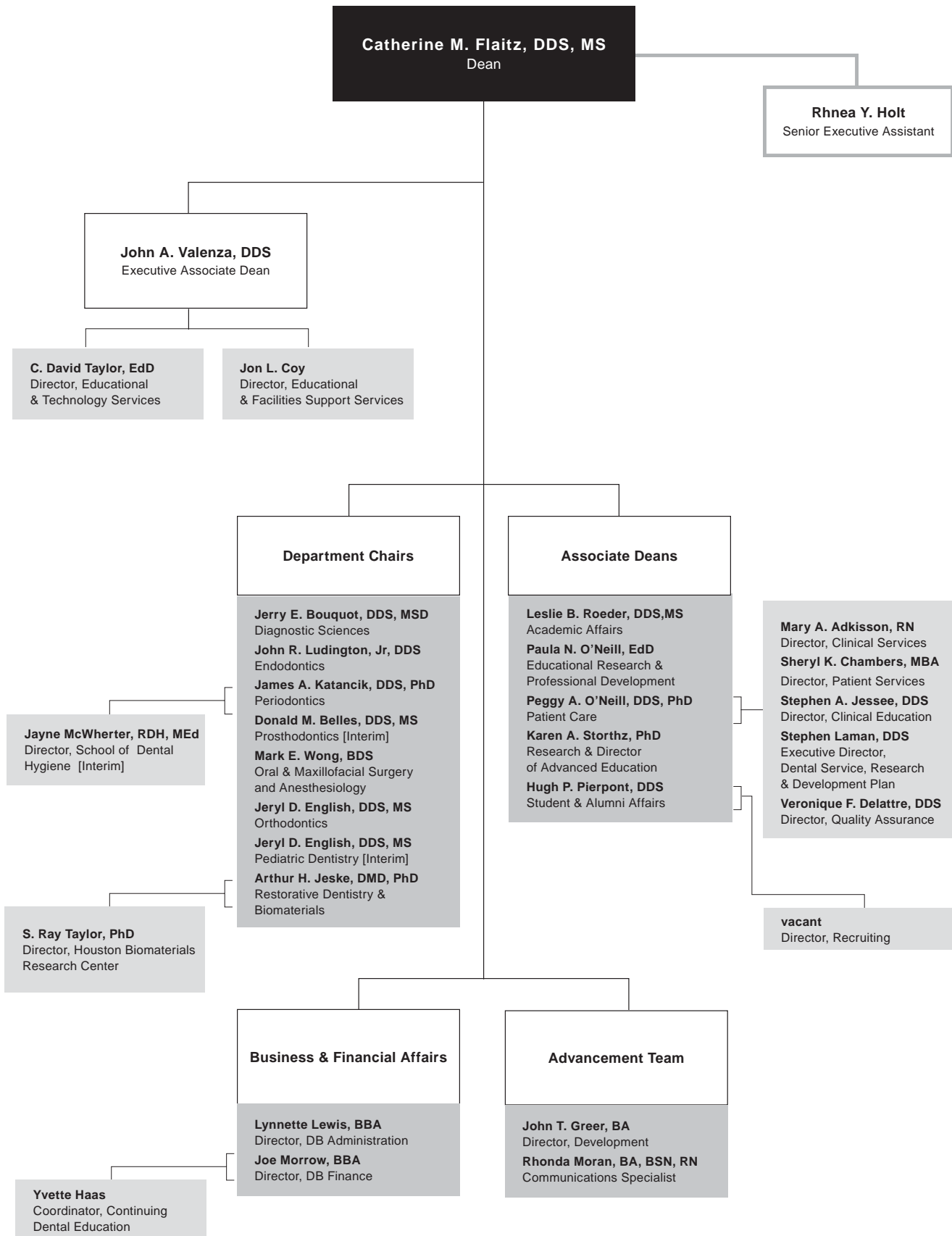
Fulfilling the mission - Community Service/Patient Care

Providing people with better health is the reason for the school's existence. Please see page 121 for additional information on Dental Branch community service activities.

Facilities

The Dental Branch is housed in a six-floor building located within the Texas Medical Center. The building consists of 325,483 gross square feet and includes basic science laboratories, lecture rooms, an auditorium, a library and learning resources center, a clinical simulation and learning center, a surgical oral pathology laboratory, a faculty practice clinic, faculty offices, clinics, administrative offices, and service and mechanical areas. There is also space for clinical research and continuing education.

Source
Lynnette Lewis
Dental Branch



1a Graduate School of Biomedical Sciences

Dean George M. Stancel, PhD

Administrative and departmental offices are presently located in:
George & Cynthia Mitchell Basic Sciences Research Building
6267 Bertner
Houston, Texas 77030

Source

Linda Carter
Graduate School of Biomedical Sciences

History and Purpose

The UT Graduate School of Biomedical Sciences (GSBS) educates all the future PhD and MS biomedical scientists from the UT Health Science Center and UT M D Anderson Cancer Center at Houston, as well as all the combined MD/PhD graduates. Authorized by the 58th Legislature in 1963, its mission is to train and educate research scientists and scientist-educators, to generate new knowledge in the biomedical sciences that will be translated into improved health, and to increase public understanding of science. In essence, the school provides for the workforce needs of Texans and the nation and help solve the health challenges of the future.

Originally established as the academic arm of The UT M D Anderson Cancer Institute, GSBS has become an important academic bridge between several Texas Medical Center institutions. The GSBS links graduate education at UTHSC-H and UT M D Anderson Cancer Center as well as Texas A&M Institute of Biosciences and Technology. Through its highly collaborative graduate education programs, the GSBS adopted an interdisciplinary approach to graduate education that provides broad-based training in the biomedical sciences, as well as in-depth training in the area of a student's thesis and dissertation research.

Following a basic core of required courses, students may choose one from 14 formal programs, or design a highly individualized degree plan of study toward a PhD, MD/PhD, or MS degree. This educational structure enables students to conduct their research in a traditional discipline or in newly developing inter- or multi-disciplinary areas. This flexible approach provides both depth and breadth in training in the biomedical sciences and serves to attract some of the best and brightest students as well as faculty, which results in the growth of an immense intellectual resource for Texas.

Instructional Programs

The vast Texas Medical Center faculty and facilities are at the fingertips of GSBS students. As listed in the catalog, areas of study include biochemistry, biomathematics and biostatistics, biophysics, cancer biology, cell biology, molecular carcinogenesis, genes and development, human and molecular genetics, immunology, integrative biology, microbiology and molecular genetics, molecular biology, molecular pathology, neuroscience, pharmacology, physiology, radiation biology, regulatory biology, virology and gene therapy. In addition there are two specialized master degree programs: genetic counseling and medical physics.

Currently there are 577 full-time faculty. This large and distinguished group includes the 1998 winner of the Nobel Prize in Physiology or Medicine, two Lasker Award winners, and numerous recipients of other honors, awards and professional recognition. Faculty from our combined participating institutions consistently receive more than \$200 million in research support annually from the National Institutes of Health, giving them (and the GSBS) a rank in the top 1-2 percent of NIH funding in the world.

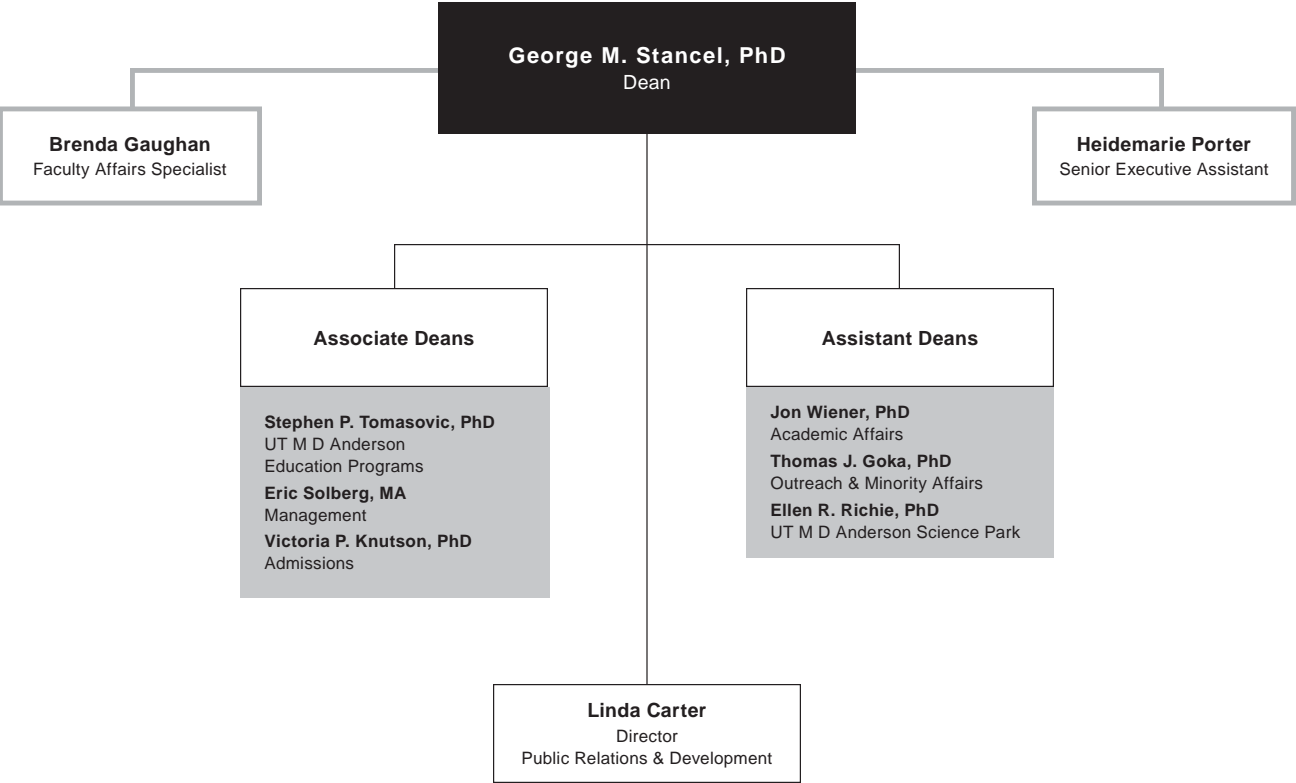
The Fall 2008 student body of 548 includes approximately one-third of its population from Texas, one-third from other parts of the United States, and one-third who are international students, with an equal number of men and women. Current GSBS students are offered over \$1 million in scholarship awards and stipend support for scholastic excellence and research achievement.

Facilities

The Graduate School, including the Dean's Office and Administrative personnel, is permanently located in the new George and Cynthia Mitchell Basic Sciences Research Building where it is housed in the June & Virgil Waggoner Academic Hall. Complete with state of the art classrooms, computer lab, auditorium, and telecom capabilities for beaming classes and lectures around the globe, it is geared for a growing and dynamic student population.

Following first year classes in a broad range of biomedical sciences and research ethics, many didactic teaching and training activities of the GSBS are conducted in lecture rooms and laboratories where faculty members hold their primary academic appointments. These include facilities at other UTHSC-H components, UT M D Anderson Cancer Center, Baylor College of Medicine, Rice University, Texas Woman's University and the University of Houston. The Graduate School's intellectually rich and cooperative environment provides GSBS students the opportunity and challenge to develop research projects which will prepare them for the rapidly changing nature of health care needs and to find the solutions for the generations ahead.

Source
George M. Stancel
Graduate School of Biomedical Sciences



1a School of Health Information Sciences

Dean Jack Smith, MD, PhD

Administrative and departmental offices are located in:
University Center Tower
7000 Fannin, 6th, 8th, and 14th Floors
Houston, Texas 77030

Source

Jack Smith
School of Health Information Sciences

History and Purpose

The School of Health Information Sciences (SHIS) is the first such school in the nation to offer graduate degrees in health informatics. Informatics became the focus of the school in 1997, with the school's name changing in 2001 to reflect its new mission. SHIS is now recognized nationally and internationally for innovative, interdisciplinary approaches to research and education. This new knowledge is being applied to research, health care, application and the education of outstanding informatics leaders. The school's mission is to provide educational and research opportunities in informatics to health care professionals and biomedical scientists working as interdisciplinary teams. As health care is becoming a cooperative interaction among the health and bioscience disciplines, there is a need for health practitioners and scientists who better understand the data, information, knowledge, assumptions and decision making of others as they attempt to design, provide and evaluate health care and scientific data.

Instructional Programs

Currently the school offers two degrees, a master of science in health informatics (MS) and a doctor of philosophy in health informatics (PhD). The School also offers a 5 course Certificate of Health Information Sciences.

SHIS offers interdisciplinary graduate-level courses in health informatics for students enrolled in UTHSC-H's schools and for health professionals and scientists in the Texas Medical Center (TMC) and across the state. The MS degree focuses on the study of how health and biomedical science data are collected, stored and communicated and how the data are processed into health information suitable for research, administrative, and clinical decision making.

The curriculum stresses the development of interdisciplinary teams to evaluate and address the complex informatics issues that face healthcare and biomedical research. The identified issues are based on real-world problems. Students have been able to solve some of these problems during their study with faculty mentors. The PhD program is designed for graduates to research and evaluate new regions or domains of health informatics, lead interdisciplinary teams, and effectively communicate research findings to peers and practitioners. Newly inaugurated dual degree programs with the School of Public Health further promote the collaboration and interdisciplinary activities for the two schools.

Students come from a wide variety of backgrounds with a variety of skills. Each student, along with a faculty admissions committee, determines the student's curriculum from a matrix of courses. Scientists and practitioners across UTHSC-H, the Texas Medical Center, and beyond provide a real world laboratory for honing reasoning, knowledge and research skills. The programs receive strong support from UTHSC-H and other TMC institutions.

There are three focus areas. Originally, the curriculum for the degrees in Health Informatics was primarily clinically focused. Currently, SHIS is enhancing two other informatics focus areas within the MS and PhD programs.

First focus area, Clinical Informatics:

- + Cognitive science in medicine
- + Clinical Translational Science
- + Artificial intelligence, knowledge modeling, and decision support
- + Information retrieval, data mining, and database design
- + Ontology
- + Practice guidelines
- + Electronic medical records
- + Telemedicine
- + Public Health and bio-security Informatics
- + User interface design and human-computer interaction in health care
- + Information display and visualization
- + Patient safety
- + Informatics for extreme environments
- + Medical decision making
- + Personal health information management

Second focus area, Computational Biomedicine:

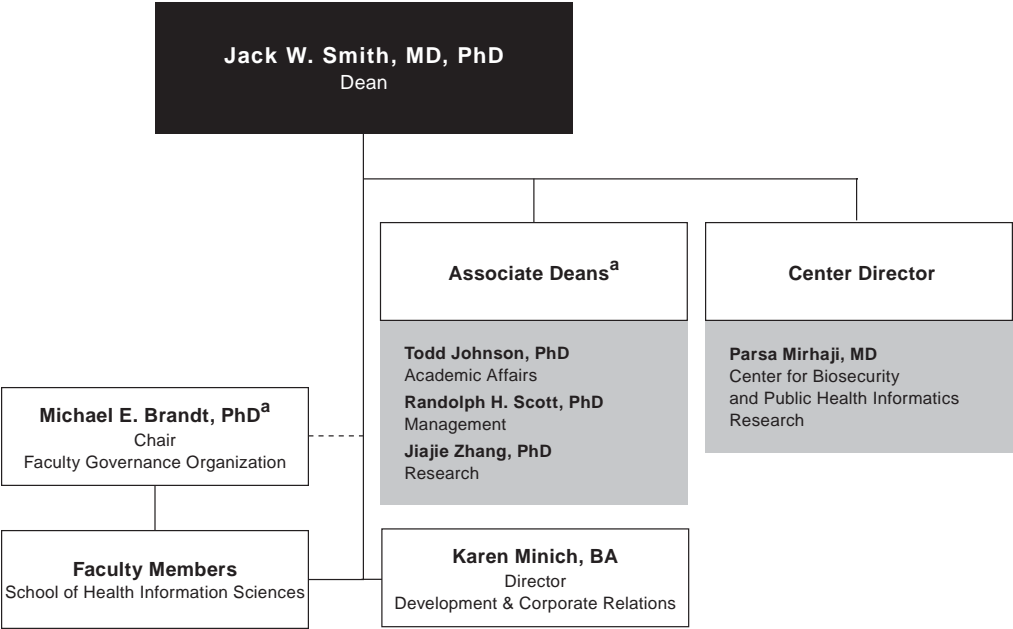
- + Bioinformatics
- + Computational biostatistics
- + Computational biomedical engineering sciences
- + Neuroinformatics
- + Systems biology
- + Modeling and simulation of biomedical systems and processes
- + Image and signal analysis
- + Image pulse sequences
- + Complex dynamic systems in biomedicine

Third focus area, Learning and Technology:

- + Instructional research and evaluation
- + Educational research design
- + Statistics and measurement
- + Instructional technology
- + Use and evaluation
- + Instructional design
- + Learning sciences

Source
Randolph Scott
School of Health Information Sciences

^a Those who serve on the School's Executive Committee.



1a Medical School

Giuseppe N. Colasurdo, MD, Dean

Administrative and departmental offices are located at:
Medical School Building
6431 Fannin
Houston, Texas 77030

Source

Abby Mitchell
Medical School

History and Purpose

On June 13, 1969, The University of Texas Medical School at Houston was created by an act of the Legislature and an appropriation for its initial cost was made to be effective September 1, 1969. The mission of the Medical School is to provide the highest quality education and training of future physicians for the State of Texas, in harmony with the state's diverse population; to conduct the highest caliber of research in the biomedical and health sciences; and to provide exemplary clinical services.

Instructional Programs/Joint Programs

Doctor of Medicine

The Medical School program leading to a medical doctor degree has two primary components: two years of basic science study and two years of clinical experience. The basic science years, with the second year designed as a bridging year, are devoted to preparing the student for the clerkship experiences of the third and fourth years. Each student has a faculty advisor who helps devise the student's educational sequence and set career goals and postgraduate educational plans. An alternate pathway program, entered during the first year, allows a student to complete the first year of basic science courses in two years.

Doctor of Medicine/Doctor of Philosophy

The Medical School and the Graduate School of Biomedical Sciences participate in a combined program leading to the MD and PhD degrees. This program is sponsored and supported by the health science center and UT M D Anderson Cancer Center, is administered by an MD/PhD committee and involves faculty from both institutions. The requirements for the program meet the general requirements of both degrees in a flexible six-year program.

Doctor of Medicine/Master of Public Health

The Medical School and the School of Public Health participate in a combined program leading to the MD and the MPH degrees. The program is integrated throughout a five-year period so that continuity of the dual objective is maintained while periods of concentration alternate between the medical and public health curricula. The requirements established for the program meet the general requirements for both degrees.

Master of Science in Clinical Research

In August 2002, the Medical School began offering a master's degree in clinical research. This degree program is designed as a focused, flexible, and affordable program to train clinical investigators in designing and conducting patient-oriented research that is of exemplary quality. The curriculum accommodates clinicians' busy schedules; the courses are held one afternoon a week. The degree can be completed in two to four years depending on the amount of time a student devotes to the program. The curriculum for the master's program consists of two tracks – a patient-based clinical research track and a translational research track.

Reciprocal Agreements

Through reciprocal agreements, students at other UT System components, Rice University, Baylor College of Medicine, Texas Women's University, and the University of Houston may take graduate courses for credit at the health science center. In addition, health science center graduate students may take courses for credit at any of the above institutions. Mechanisms for payment of tuition or registration fees vary according to the individual institution.

Facilities

The nine-story Medical School Building is connected to a new six-story research building that has four floors of research labs and two floors for a vivarium, replacing the original John Freeman Building. On its other side, the building bridges Ross Sterling Avenue to form one continuous structure with Memorial Hermann Hospital - Texas Medical Center. The Medical School Building contains offices, laboratories, classrooms, lecture halls, study areas, educational and biomedical communications support areas, student lounges, and administrative suites. The Medical School leases space in the nearby Jesse Jones Library Building for administrative functions, departmental functions, and clinical research. The top two floors will be devoted to a state-of-the-art vivarium, and the first four floors will be dedicated to research. Physician faculty provide the majority of their outpatient care in the UT Professional Building, located across the street from the Medical School.

Affiliated Hospitals

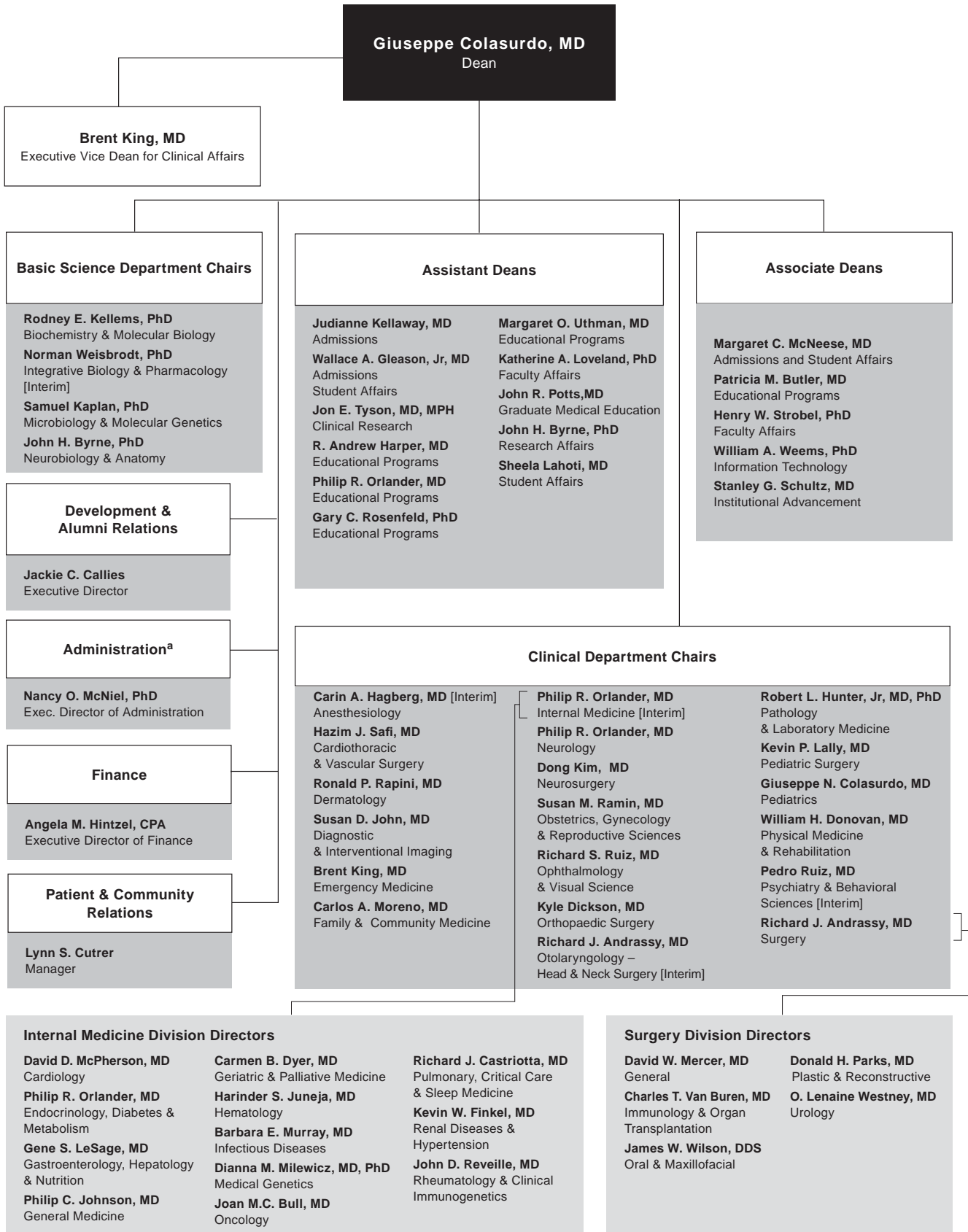
Primary affiliations are with Memorial Hermann Hospital and the Lyndon B. Johnson General Hospital of the Harris County Hospital District. Other major affiliates include UT M D Anderson Cancer Center, UT Harris County Psychiatric Center, and the Texas Heart Institute/St. Luke's Episcopal Hospital.

Group Practice

The *Patient Care* section includes information on the Faculty Practice Plan (MSRDP), UT Physicians, and Affiliated Medical Services.

Source
Abby Mitchell
Medical School

a Medical School Finance & Administration reports directly to the Executive Vice President for Chief Operating & Financial Officer and has a secondary reporting relationship to the Medical School Dean.



1a School of Nursing

Dean Patricia L. Starck, DSN, RN, FAAN
School of Nursing & Student Community Center
6901 Bertner Avenue
Houston, Texas 77030

Source
Patricia L. Starck
School of Nursing

History and Purpose

The University of Texas Health Science Center-Houston School of Nursing, had its origins in 1890 from the John Sealy Hospital Training School for Nurses in Galveston, one of the oldest schools of nursing in the southwestern United States. The baccalaureate nursing program of the UT System expanded to Houston in 1972, when nursing courses were offered in Houston. This was the same year that UTHSC-H came into being. The UT School of Nursing was organized in 1972 and began offering the master of nursing degree in the same year. In 1976, the nursing UT System structure dissolved and the School of Nursing at Houston was reorganized under the control of the health science center. In 1995 the School initiated the Doctor of Science in Nursing degree program.

Instructional Programs

Bachelor of Science in Nursing

The School of Nursing offers an undergraduate program leading to the degree of bachelor of science in nursing (BSN). The undergraduate program is designed for students who wish to enter the profession of nursing and for nurses who have earned an associate degree or diploma in nursing and desire to obtain the baccalaureate degree. The school offers an accelerated BSN for second degree students.

Master of Science in Nursing

The master's program (MSN) is designed for nurses who have the baccalaureate degree in nursing and wish to prepare for advanced practice in a specialized area with role preparation as clinical specialists, educators, administrators, or nurse practitioners.

Program options available in the MSN degree program are:

- + Acute Care Nursing
- + Adult Health
- + Emergency Care
- + Family Nursing Practitioner
- + Gerontological Nursing
- + Nurse Anesthesia
- + Nursing Leadership and Administration in Health Systems
- + Pediatric Nursing Practitioner
- + Psychiatric/Mental Health Nursing
- + Women's Health Care

MSN/MPH

There is a cooperative degree option of MSN/MPH, which is offered jointly by the School of Nursing and School of Public Health. Post-masters certification courses are also available.

Doctor of Philosophy in Nursing

In 1995, the school was approved to implement a doctor of science in nursing (DSN) degree program. This research doctoral degree title was changed to the Doctor of Philosophy (PhD) degree in September 2007 for past, present and future graduates.

Doctor of Nursing Practice (DNP) Program

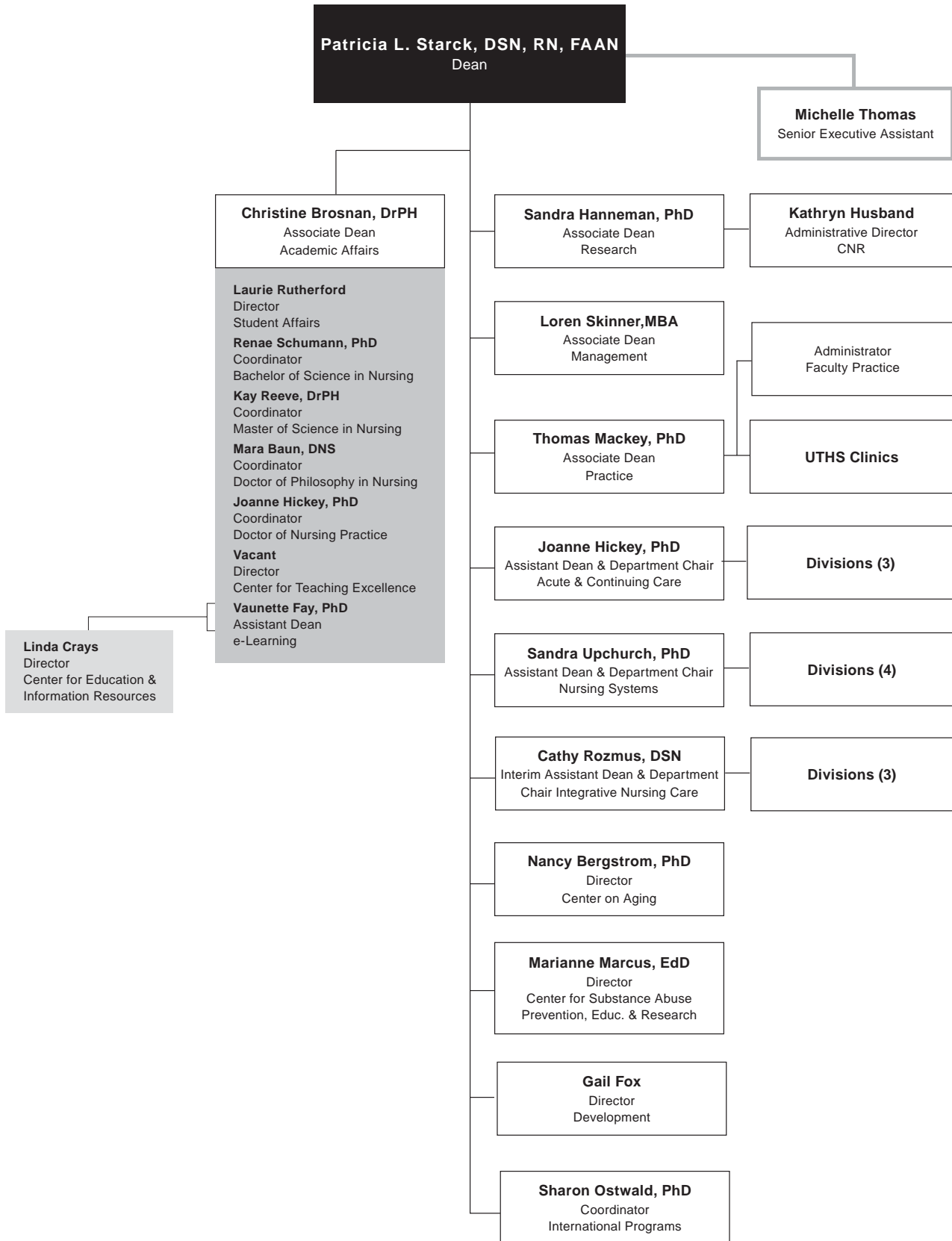
The Doctor of Nursing Practice degree program is a cutting edge *practice doctorate* that will prepare advanced practice nurses with depth and breadth of knowledge and competencies to be clinical scholars recognized for outstanding direct patient care and leadership in nursing practice and health care organizations now and in the future. Students will develop high level expertise in evidence based practice and translation of evidence to individuals and populations using the latest knowledge, technology, and informatics to support new models of care delivery and quality patient outcomes. Through understanding of the complex health care system and patient needs, students will become leaders in working with other health professionals and stakeholders to provide safe, comprehensive, culturally sensitive, and seamless care. The program is a part time, post masters degree program that will initially admit advanced practice nurses who are *nurse practitioners*. The program takes advantage of the outstanding resources available in the Texas Medical Center and affiliated organizations for outstanding learning experiences. The curriculum includes 46 credit hours post masters that can be completed in eight semester of part time study (two courses per semester) and is designed to meet the educational needs of busy working advanced practice nurses.

Facilities and Affiliations

Clinical learning experience is available within other UT components in the Texas Medical Center and in the broader community. Affiliate institutions include: The Methodist Hospital, the Memorial Hermann Healthcare System, St. Luke's Episcopal Hospital, Texas Children's Hospital, St. Joseph Hospital, The Texas Institute for Rehabilitation and Research, UT Harris County Psychiatric Center and other health care facilities. Students also have opportunities for learning experiences in neighborhood health centers, nursing homes, day care centers, city and county health departments, mental health facilities and physicians' offices and clinics. A unique opportunity for clinical training exists in the nurse-managed clinic, UT Health Services, established in 1991.

UT Health Services is located at 7000 Fannin, 16th floor. This clinic offers primary care and occupational medicine care to individuals within the university and to the larger community. The providers are nurse practitioners with some physicians as well. There are two satellite clinics - one in Pearland and one in the UT Physician building. Contact 713-500-3267 for more information.

Source
Dean's Office
School of Nursing



1a School of Public Health

Dean Guy S. Parcel, PhD

Administrative and departmental offices are located in:
Reuel A. Stallones Building
1200 Herman Pressler Street
Houston, Texas 77030

Source

Tracie Chase
School of Public Health

History and Purpose

The Texas State Legislature authorized a School of Public Health within The University of Texas System in 1947, however funding was delayed until 1967 and the first class, admitted in the fall of 1969. The mission of the school is to protect and improve the health of the public by providing the highest quality graduate education, research and community service for Texas, the nation and internationally. The school's first responsibility is to provide present and future practitioners, teachers and scientists the highest quality graduate education in the theory and practice of public health. The school continues to build dynamic partnerships between its research programs and community agencies and groups to translate research knowledge to effective community health programs. To address the need for graduate public health education in other geographic areas of the state the School of Public Health established Regional Campus programs in Austin, Brownsville, Dallas, El Paso, and San Antonio.

Instructional Programs

Master of Public Health

The master of public health (MPH) degree is the basic professional degree in the field. It is required for many supervisory and managerial positions in public health and is recommended for many others. Students are admitted to one of the Divisions (Biostatistics, Environmental & Occupational Health Sciences; Epidemiology & Disease Control; Health Promotion & Behavioral Sciences; or Management, Policy, & Community Health) or Regional Campuses (Austin, Brownsville, Dallas, El Paso, or San Antonio) through which they complete a series of courses that cover the breadth of public health and develop competencies appropriate for their elected discipline.

Master of Science

The master of science in public health (MS) degree is offered within the following fields of study: Biostatistics and Epidemiology. These are research fields, each with a theory, a body of knowledge, and a set of methods that define it. They interrelate substantially, however, and constitute much of the broad field of public health. Since preparation in depth in such a multiplicity of fields is impossible, the student is expected to focus in one or a few areas and gain an understanding of the interrelations within the array. A student elects one of these fields as a major and selects another public health discipline as a minor area of study.

Doctor of Public Health

The doctor of public health (DrPH) degree signifies distinguished scholarly accomplishment in the professional field and is designed for those who plan careers involving professional practice, teaching or research. Students will affiliate with one of the Divisions (Environmental & Occupational Health Sciences; Epidemiology & Disease Control; Health Promotion & Behavioral Sciences; or Management, Policy, & Community Health), but may also select courses in other Divisions. Students elect to concentrate in one of the public health disciplines or in a special topic area. While the primary course of study for doctoral programs is located at the Houston campus, doctoral candidates may engage in research at one of the four Regional Campuses.

Optional Concentration for both MPH and DrPH

Global Health (Interdivisional)

Doctor of Philosophy

The doctor of philosophy in public health (PhD) degree requires scholarly attainment and a capacity for independent research. It is primarily a research and teaching degree. Curricula leading to the degree are offered in behavioral sciences, biostatistics, environmental sciences, epidemiology and management & policy sciences.

Dual Degree Programs

Dual degree programs include the MD/MPH in collaboration with The University of Texas Medical School at Houston and in collaboration with The University of Texas Health Science Center at San Antonio, the JD/MPH in collaboration with the University of Houston Law Center, the MSN/MPH in collaboration with The University of Texas School of Nursing at Houston, the MSW/MPH in collaboration with the University of Houston Graduate School of Social Work, and the MS/MPH or PHD/MPH in collaboration with The UT School of Health Information Sciences at Houston. In addition, the Registered Dietetics program is available in combination with all four public health degrees.

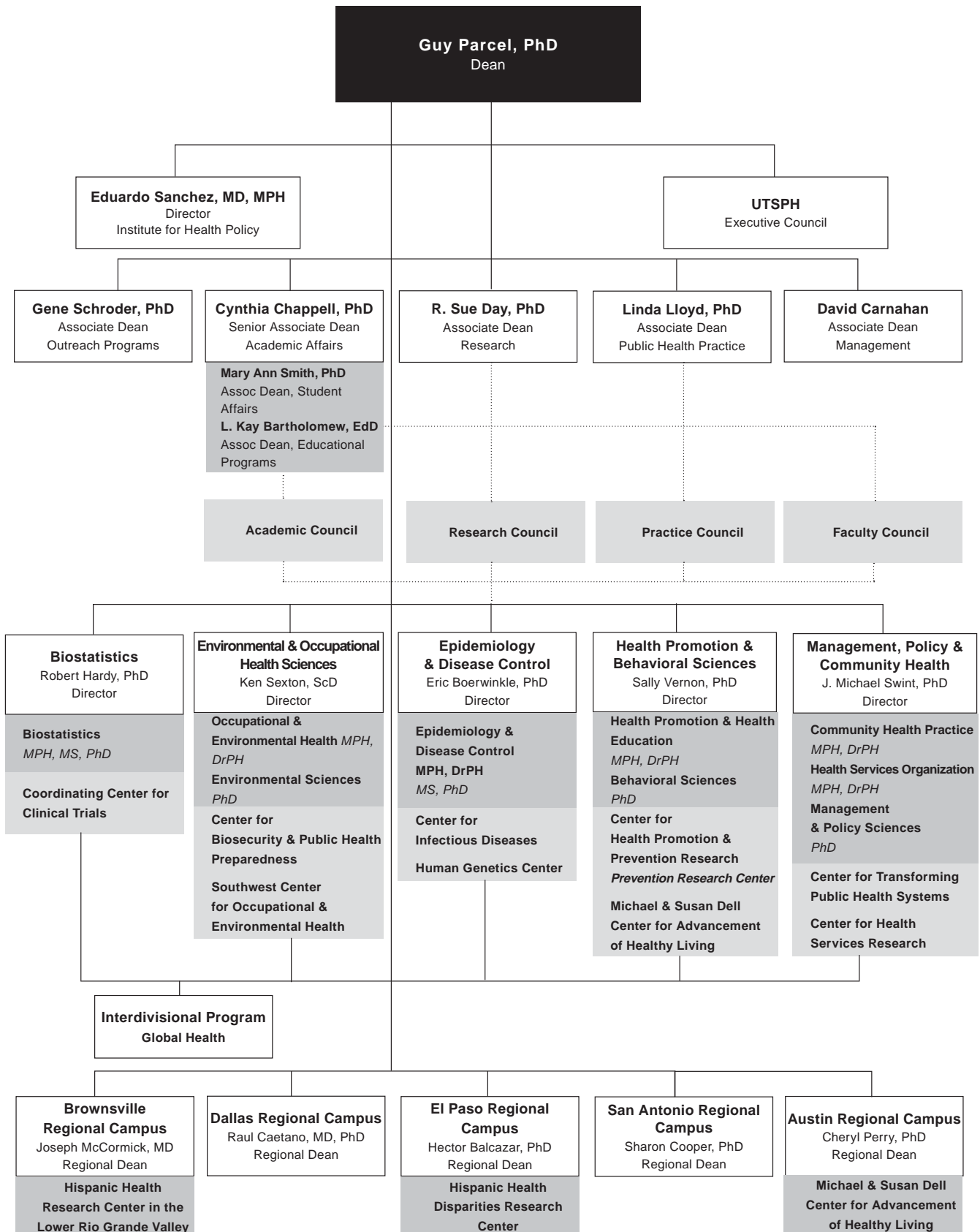
Certificate in Public Health

The certificate program is intended for public health practitioners and individuals considering a graduate degree in the field. The five courses in this non-degree program cover the core content of the basic public health disciplines and are available at all campuses. A certificate is awarded to students who perform at a satisfactory level in all five courses.

Facilities

The main campus of the school is in the Reuel A. Stallones building, named for the founding dean who served from 1967 until 1986. The 10-story, 220,000 gross-square-foot building is located in a park setting with outstanding library, computer and research laboratory facilities. The school established regional campus programs in San Antonio (1979), El Paso (1992), Dallas (1998), Brownsville (2001) and Austin (2007).

Source
Tracie Chase
School of Public Health



1a Harris County Psychiatric Center

Executive Director Pedro Ruiz, MD
Chief Administrative Lois Moore, BSN, MEd, LHD, FACHE
Administrative and departmental offices are located in:
W. Leland Anderson Campus
2800 South MacGregor Way
Houston, Texas 77025

Source
Geri Konigsberg
UT Harris County Psychiatric Center

History and Purpose

The University of Texas Harris County Psychiatric Center (UTHCPC) was established by the State of Texas Legislature in 1986 with a legislative mandate to function as a university mental health care hospital. UTHCPC's mission is one of service to patients, education of those interested in the treatment of the mentally ill and research of new methods of treatment and community service in an effort to reach and educate more people about mental illness.

Programs

For the past 20 years, UTHCPC has been the primary provider of acute inpatient psychiatric care for all of Harris County's indigent residents, serving persons with mental illness and those with mental illness and substance abuse illnesses. Since opening, UTHCPC has provided comprehensive psychiatric and clinical social services to more than 75,000 patients. Thousands more have been reached through numerous community-based seminars, programs and educational events.

During FY 2007, UTHCPC's expanded treatment options included inpatient and intensive outpatient services and programs for children and adults. Services to children and adolescents include a cooperative program with the Harris County Juvenile Probation Department, Neighborhood Centers and Gulf Coast Community Head Start. A residential treatment center, serving adolescents ages 12-17, was opened. A unit serving those in the custody of the Harris County Sherriff's Department/Harris County Jail System was opened to serve those inmates with mental health problems.

UTHCPC is the only facility of its kind in the state that serves as an operating unit of a major university and provides primary psychiatric care. UTHCPC serves a diverse population in culture, ethnicity, race, education and economic status (including the homeless, those with marginal incomes, private insurance and entitlements such as Medicare and Medicaid.)

UTHCPC provides clinical rotations for approximately 600 undergraduate and graduate students in medicine, nursing, psychology, pharmacy, health administration, recreation and occupational therapy, pastoral counseling and clinical social services each year.

Members of the UT Medical School at Houston department of psychiatry and behavioral sciences and the Mental Sciences Institute work in conjunction with staff at the UTHCPC on various research activities. New technologies enable sophisticated research exploring the functioning of the brain. This research may be instrumental in developing innovative treatment modalities for psychiatric

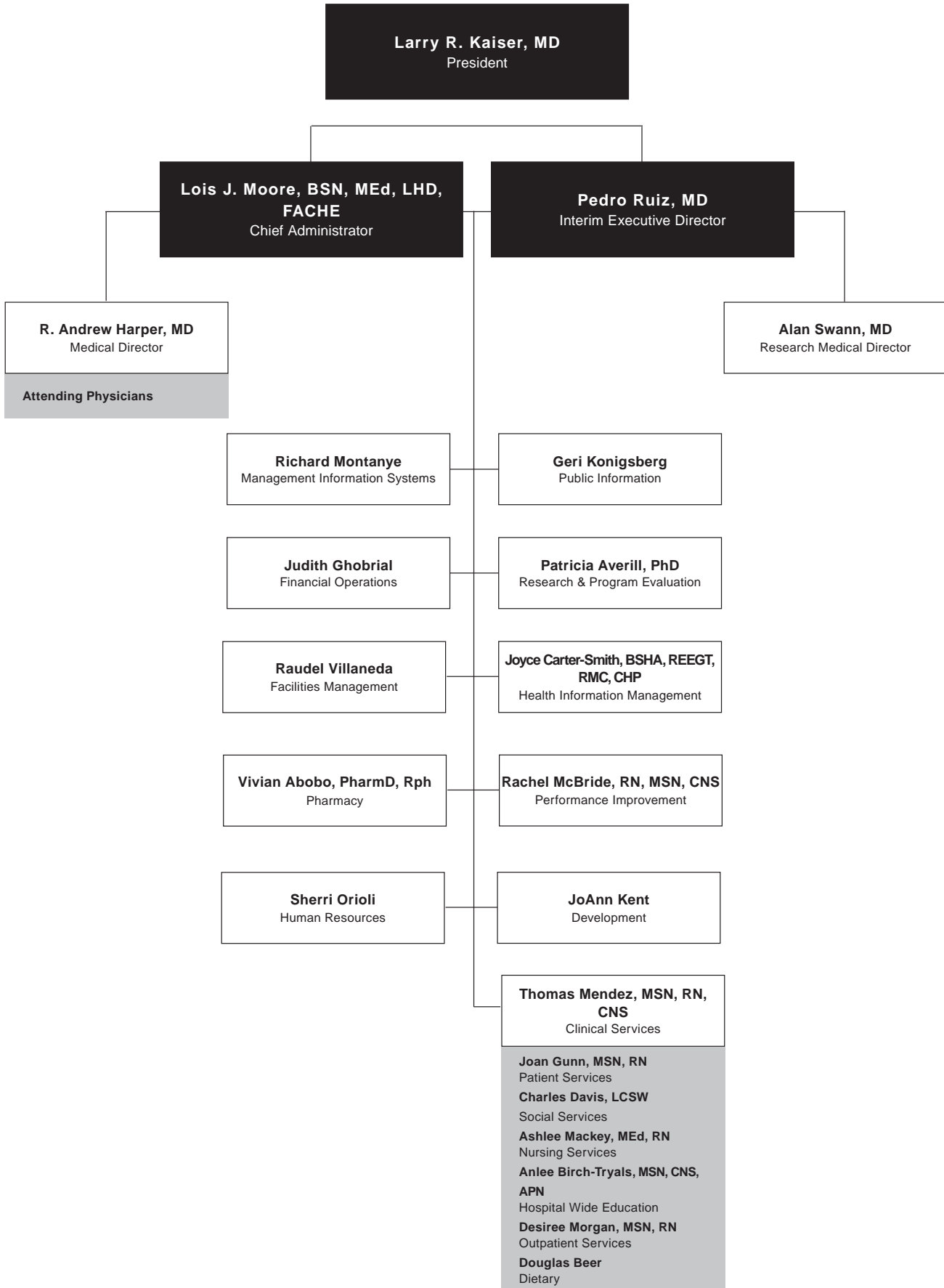
disorders. Research collaborations include the UT School of Nursing at Houston, the University of Houston, the Mental Health and Mental Retardation Authority of Harris County and the Mental Sciences Institute.

UTHCPC research can and often does involve many treatment options besides medication. These include using neuro-imaging to develop more effective diagnostic procedures; refining criteria of treatment choice; improving crisis treatment options; measuring patient outcomes; developing various patient education models; and studying the effect of therapeutic interventions from all disciplines – nursing, psychology, music therapy, etc. – that improve service delivery.

Facilities

UTHCPC is a licensed 250-bed, acute care, inpatient psychiatric facility. It is housed in a three-story, 180,000 gross-square-foot facility on seven acres near the Texas Medical Center. The outpatient facility is located in close proximity to the hospital.

Source
 Geri Konigsberg
 UT Harris County Psychiatric Center



1a The Brown Foundation Institute of Molecular Medicine for the Prevention of Human Diseases

Director and Chief Executive Officer C. Thomas Caskey, MD, FACP
Director Emeritus Ferid Murad, MD, PhD
Deputy Director Irma Gigli, MD

Administrative and departmental offices are located in:
Fayez S. Sarofim Research Building
1825 Pressler Street, Houston, Texas 77030-3725

Source

Irma Gigli, M.D., Deputy Director
The Brown Foundation Institute of Molecular Medicine
for the Prevention of Human Diseases

History and Mission

The Brown Foundation Institute of Molecular Medicine for the Prevention of Human Diseases (IMM) is a research institute that seeks to investigate the cause of human diseases at the genetic, cellular and molecular levels using DNA and protein technologies, and animal models. The Institute was founded in 1995. It was conceived by Dr. James Willerson as a new concept for UTHSC-H. Dr. Hans J. Müller-Eberhard was the first Director. He was succeeded by Dr. Ferid Murad, who received the Nobel Prize for Physiology or Medicine in December 1998 for his work with nitric oxide and who is now Director Emeritus. Presently, Dr. C. Thomas Caskey is Director and Chief Executive Officer and Dr. Irma Giali serves as Deputy Director.

The long-term goal of the IMM is to link one of the largest medical centers in the world to one of the best medical centers for medical research, education and patient care by setting the example for research excellence and collaborations both locally, nationally and internationally.

Major Objectives and Facilities

Advances in molecular and cell biology have enormous potential for innovative medical research and the future practice of medicine using novel therapies. IMM endeavors to design methods rational therapy through its focus on the causes of human diseases at the cellular and molecular levels using DNA and protein technologies to clarify disease mechanisms. Strategies for the prevention of human diseases are focused on heart diseases, hypertension, stroke, vascular, metabolic and neurodegenerative diseases, as well as inflammatory and immunologic disorders.

In 2006, the IMM relocated from the Institute of Biosciences and Technology building to the new 223,000-square-foot Fayez S. Sarofim Research Building adjacent to University Center Tower. The new facility includes a 200-seat auditorium, a large atrium for public events, and rooms for faculty conferences and collaborative scientific discussions. At least 65 percent of the usable space is dedicated to research laboratories. A satellite facility exists at the Texas Heart Institute in the Denton Cooley Building which strengthens the IMM's basic science programs, and builds upon its excellence in research... The location of the satellite facility supports the institution's goal of continual partnership (or collaboration) with other institutions in the Texas Medical Center by sharing space and support services.

The IMM houses ten research centers and several support laboratories, each exploring the genetic and molecular aspects of biological processes significant to explain the basis of human diseases and their prevention.

The **Research Center for Cardiovascular Genetics** is leading efforts to identify molecular mechanisms that contribute to the development of heart disease, stroke and atherosclerosis.

The **Research Center for Cell Signaling** examines the role of nitric oxide and cyclic GMP in cellular signaling in vascular biology and inflammatory processes, as well as the pharmacologic implications of the discoveries. The role of nitric oxide in the differentiation of stem cells is being investigated.

The **Research Center for Diabetes and Metabolic Diseases** focuses its efforts on noninsulin-dependent diabetes, the most common form of the disease affecting our population today. The

Center is investigating the genes responsible for risk factors such as obesity, high blood pressure and high cholesterol.

The **Research Center for Human Genetics** is using genomic technologies to unravel the genetic predisposition to the most common chronic diseases, such as heart disease and stroke.

The **Research Center for Immunology & Autoimmune Diseases** is examining the molecular and genetic bases of predisposition to several different allergic, autoimmune and infectious diseases using genetically altered animals in models of diseases.

The **Research Center for NanoMedicine** focuses on inter-disciplinary research to combine nano-engineering, mathematical modeling, and biomedical sciences to develop nanotechnology enabled therapeutic and diagnostic platforms for combating diseases including cancer, cardiovascular diseases and infectious diseases.

The **Research Center for Neurodegenerative Diseases** investigates the development of the brain and the entire nervous system. New faculty are presently being recruited with a focus on the genetic and molecular causes of neurodegenerative diseases, including various forms of dementia such as Alzheimer's disease, amyotrophic lateral sclerosis and multiple sclerosis.

The **Research Center for Protein Chemistry** focuses its research activities on major topics relating to the significance of manipulating conformational changes of proteins. In addition it serves as a core facility for the structural analysis of proteins.

The **Research Center for Stem Cell Biology** explores the mechanisms behind stem cell self-renewal and differentiation with plans to expand current studies to develop stem cell lines designed to benefit transplantation medicine and the regeneration of tissues, and to provide vectors for gene therapy with direct implications for the treatment of a wide range of chronic diseases.

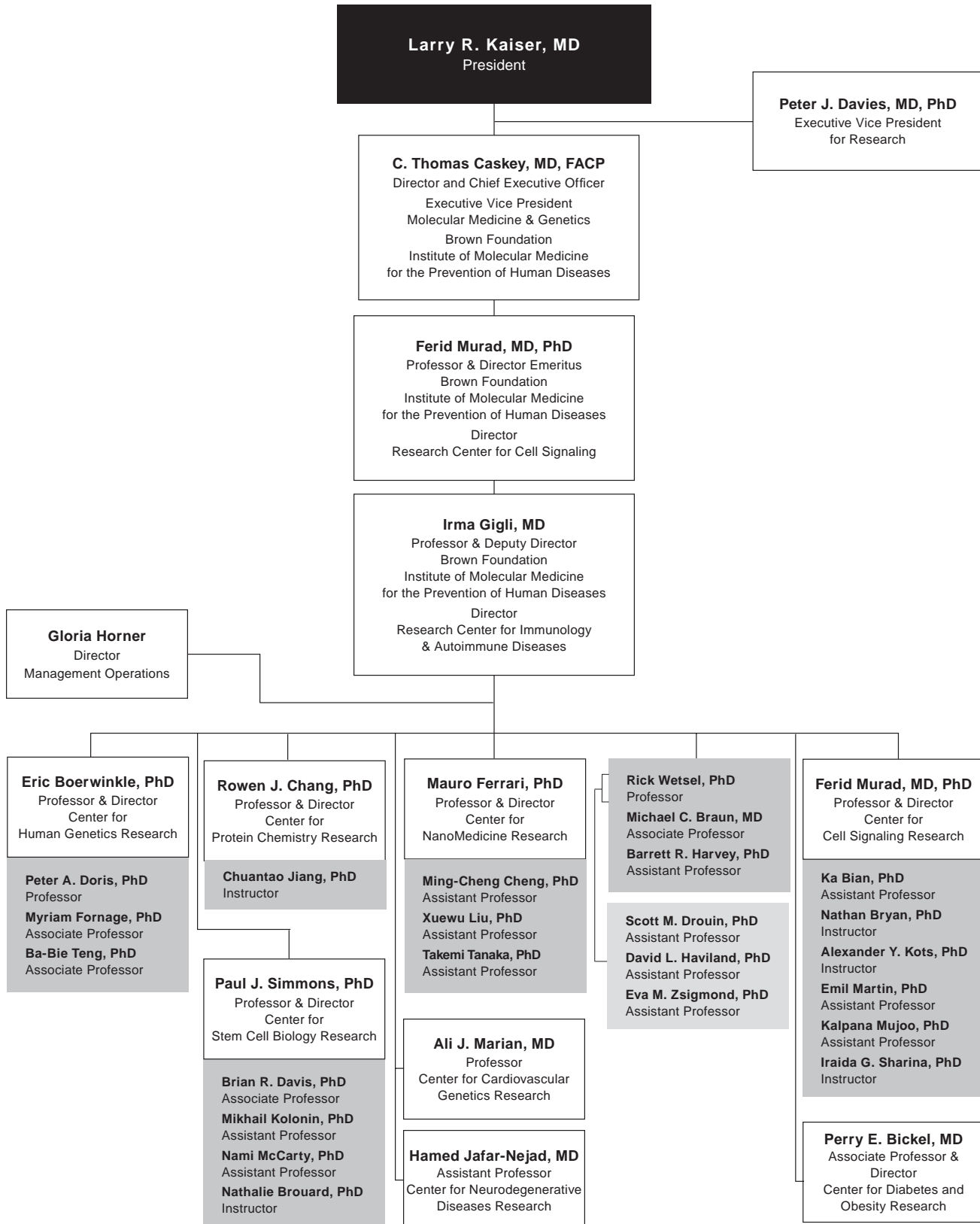
The **Laboratory for Developmental Biology** helps UTHSC-H and IMM scientists conduct research that requires the generation of transgenic and knock-out animals as models of human diseases. In these genetically altered animals candidate genes are inserted or deleted in order to study the role that specific gene products may play in the pathogenesis of different diseases.

Other Core Facilities and Laboratories include an Automated DNA Sequencing Core, Flow Cytometry and Cell Sorter Core, and a Protein Chemistry Core.

The Brown Foundation Institute of Molecular Medicine for the Prevention of Human Diseases Organization

Source

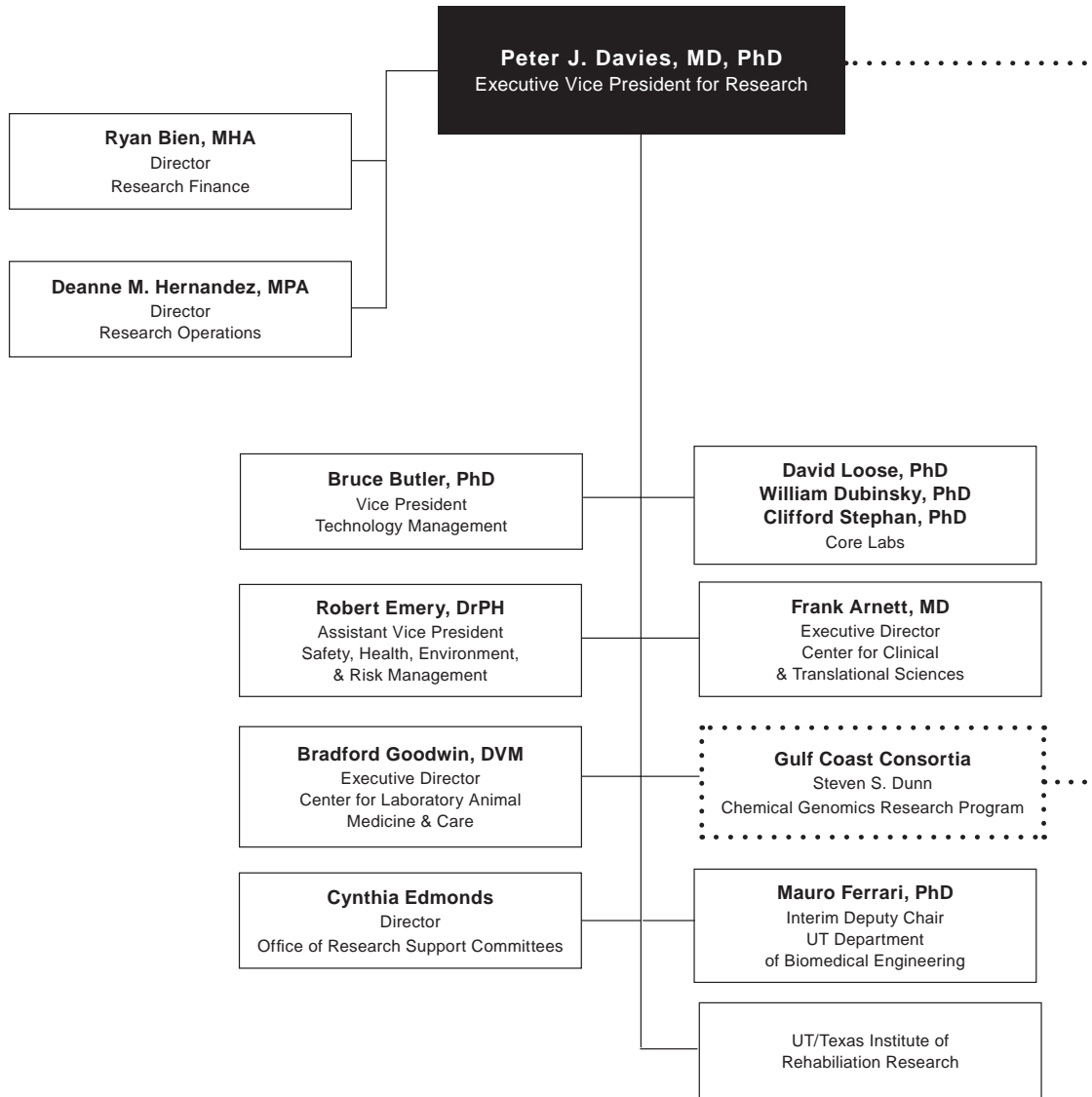
Gloria Horner
The Brown Foundation Institute of Molecular Medicine
for the Prevention of Human Diseases



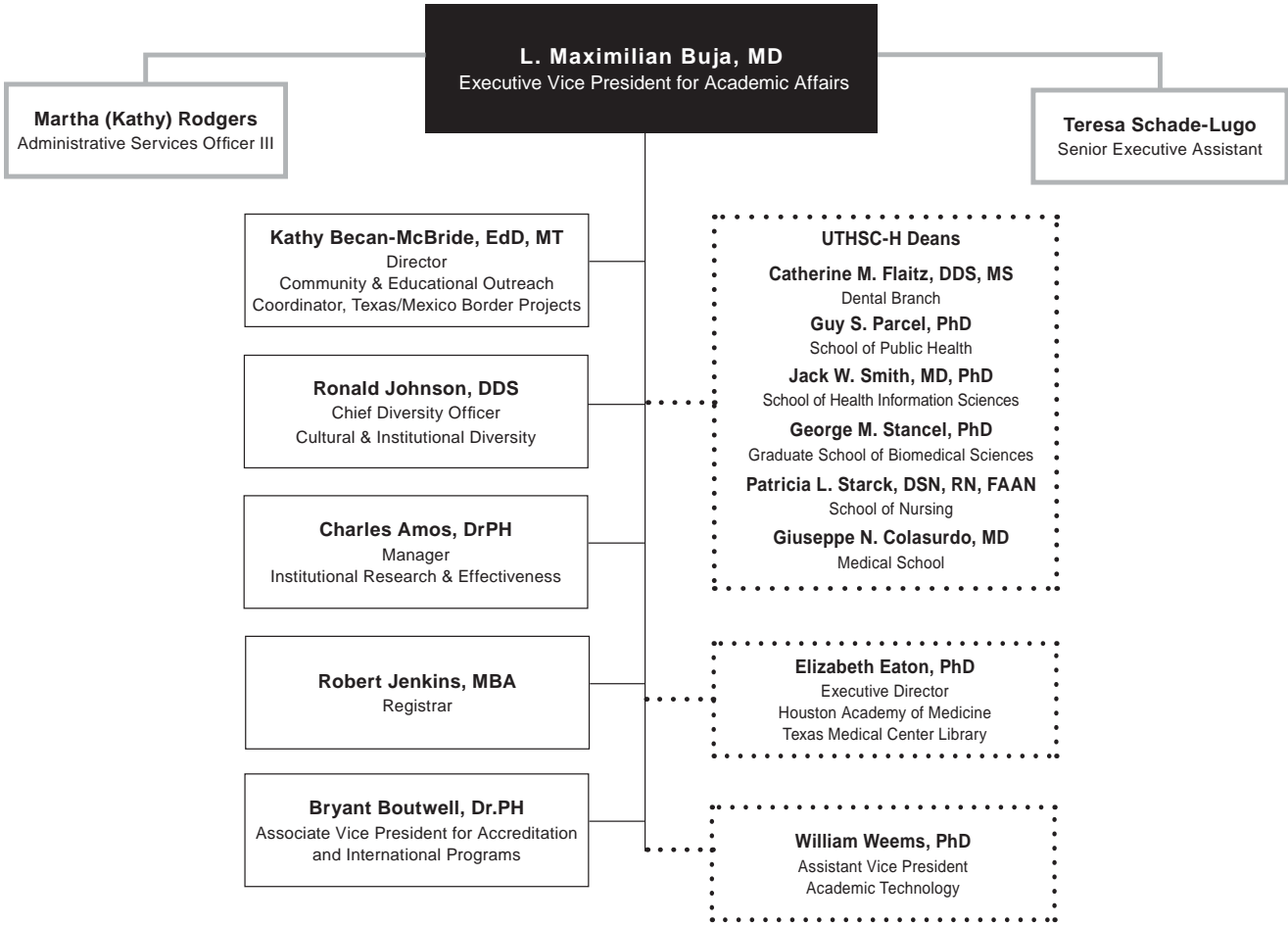
1a Research Organization

Source

Deanne Hernandez
Office of Research



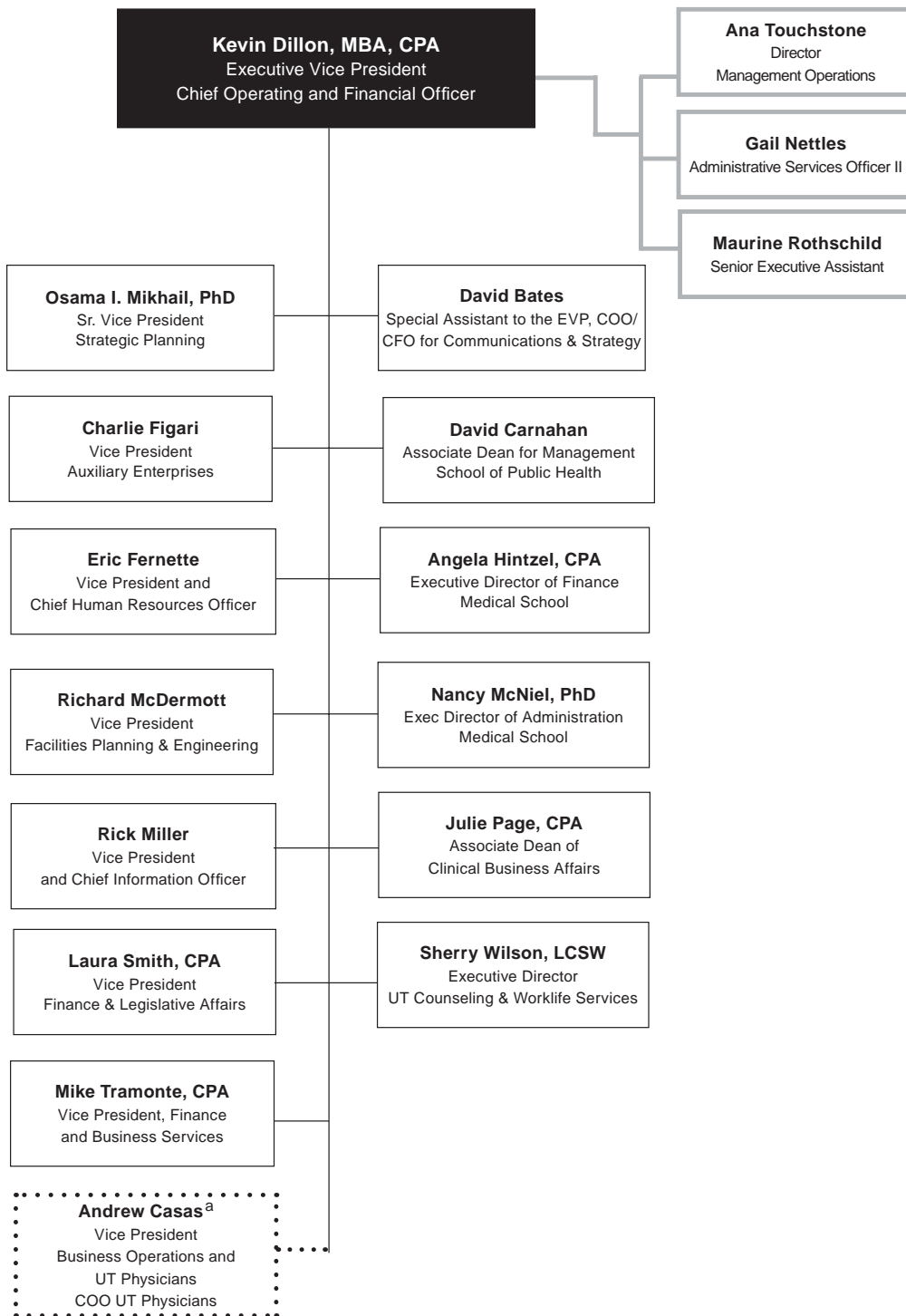
Source
 Betty Vaughan
 Office of Academic Affairs



1a Office of the Executive Vice President, Chief Operating & Financial Officer

Source
 Kevin Dillon
 Finance & Administration

a Andrew Casas shares a reporting relationship with the CEO of UT Physicians.



Source

Board of Regents Web site
www.utsystem.edu/bor/homepage.htm

The University of Texas Health Science Center at Houston is one of 15 components of The University of Texas System (UT System.) The UT System is composed of System Administration, centered in Austin, Texas, and institutions under the governance of The UT Board of Regents.

The Board of Regents

The board has been delegated the power and authority to administer The UT System by the Texas Legislature. The board is composed of nine members appointed by the Governor, with the advice and consent of the Senate, for staggered terms of six years each. The terms of three members expire on February 1 of odd-numbered years.

Board of Regents

Mr. John W. Barnhill, Jr. *Mr. Randall Camarillo (Student Regent)*
Mr. H. Scott Caven, Jr. *Mr. James Richard Huffines*
Mr. James D. Dannenbaum *Mr. Printice L. Gary*
Mr. Robert A. Estrada *Ms. Colleen McHugh*
Mr. Paul Foster *Mr. Robert B. Rowling*

The Chair of the Board

The chair is elected by the board. Chair H. Scott Caven, Jr. presides over meetings of the board, calls special board meetings and appoints standing and special board committees. The chair is a nonvoting *ex officio* member of all standing committees.

Vice Chairs of the Board

The vice-chairs are elected by the board when the chair is elected. Vice-Chairs James Richard Huffines and Robert B. Rowling, as designated by the board, assume the duties of the Chair in case of absence, death, resignation, disability, removal or disqualification.

Counsel and Secretary to the Board

Francie A. Frederick is the principal officer to the board in administering the responsibilities of the Office of the Board of Regents. The counsel and secretary is not a member of the board but is elected by it and receives compensation and maintains a staff as approved by the board.

The Standing Committees of the Board

The Executive Committee

The Executive Committee acts for the board on items that require immediate action between meetings of the board.

Chair, *H. Scott Caven, Jr.*
 Vice-Chair, *Mr. James Richard Huffines*
 Vice-Chair, *Mr. Robert B. Rowling*

Finance and Planning Committee

Chair, *Mr. Robert B. Rowling*
Mr. John W. Barnhill, Jr.
Mr. Robert A. Estrada
Mr. Paul Foster

Audit, Compliance and Management Review Committee

Chair, *Mr. Robert A. Estrada*
Mr. Paul Foster
Dr. Judith L. Craven
Ms. Colleen McHugh
Mr. Robert B. Rowling

Academic Affairs Committee

Chair, *Mr. John W. Barnhill, Jr.*
Mr. Paul Foster
Mr. Printice L. Gary
Ms. Colleen McHugh

Health Affairs Committee

Chair, *Ms. Colleen McHugh*
Mr. James D. Dannenbaum
Mr. James R. Huffines
Mr. Robert B. Rowling

Facilities Planning and Construction Committee

Chair, *Mr. James R. Huffines*
Mr. James D. Dannenbaum
Mr. Robert A. Estrada
Mr. Printice L. Gary

Student, Faculty and Staff Campus Life Committee *ad hoc*

Chair, *Mr. James D. Dannenbaum*
Mr. John W. Barnhill, Jr.
Mr. Printice L. Gary
Mr. James R. Huffines

1a The University of Texas System Organization

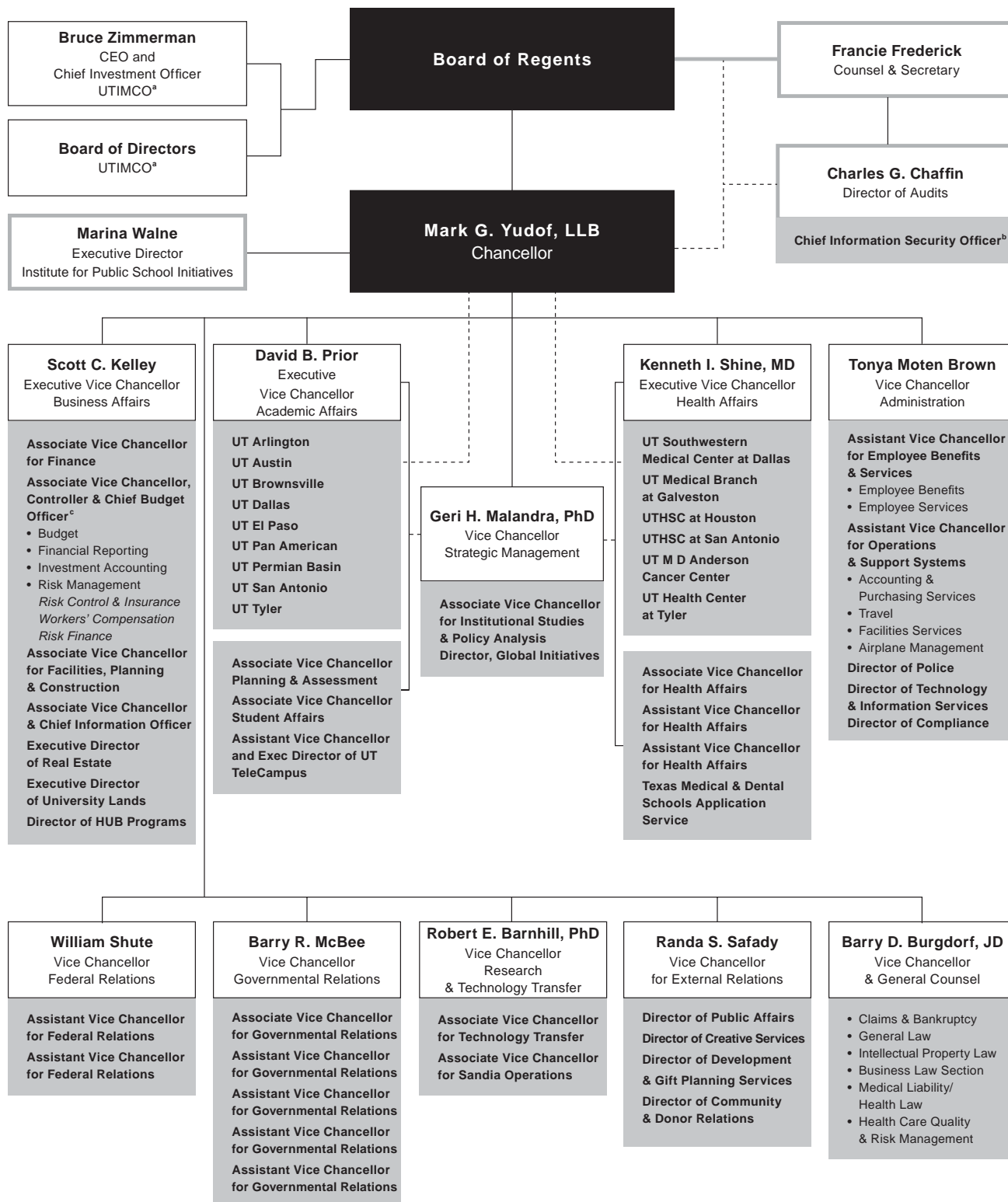
Source

UT System Office of the Chancellor

a The University of Texas Investment Management Company.

b This is a dual position; the Chief Information Security Officer reports to the Chancellor and Director of Audits.

c This is a dual position; the Chief Budget Officer position reports directly to the Chancellor.



Below is a compilation of The University of Texas Health Science Center at Houston's major print and online publications. For additional information, including contacts and most recent editions, please refer to the Web addresses.

Calendar of Events

www.uthouston.edu/calendar/

An online Calendar of Events is available for the benefit of the university community. University departments, offices, and campus organizations may submit confirmed event information directly online.

Catalogs

www.uth.tmc.edu/academic/GenSec.htm

The schools' catalogs are official publications that contain general information about the official calendar, admission and progression requirements, tuition and fees, registration, degree and certificate programs, courses, and student services.

Center on Aging eNewsletter

www.geroeducation.org/COA_eNews/

The Center on Aging eNewsletter is published quarterly by the Center on Aging. It provides information for aging seniors and their families.

Classified Information

<http://www.uth.tmc.edu/ucsc/newsletters.htm>

The University Classified Staff Council quarterly print publication of news about and of importance to classified staff at the UT Health Science Center at Houston

CORE (Catalog of Research Expertise)

research.uth.tmc.edu/cos.htm

CORE is an electronic directory of faculty profiles that provides descriptions of intramural and extramural research-related activities, school and departmental assignments, campus addresses, educational background and lists of scientific publications.

Distinctions

www.uthouston.edu/distinctions/

This monthly newspaper highlights the university's distinctive capabilities, and accomplishments in education, research, community service and philanthropic support.

Fact Book

www.uth.tmc.edu/factbook

This annual publication includes descriptive and statistical information about the university.

GSBS NEWS

The GSBS NEWS is a twice yearly newsletter that provides students, faculty, alumni and community friends with news, donor acknowledgement, and awards recognition. Through this transfer of information GSBS NEWS serves to connect faculty, students, and alumni as well as those who support us philanthropically.

GSBS FACTSHEET

A one-page, descriptive overview of the Graduate School of Biomedical Sciences, the GSBS FACTSHEET, is updated annually, and includes demographic statistics, scholarship information, mission, vision, and a map.

GSBS Recruitment Brochure

A newly re-designed recruitment brochure is used to explain, inform, and attract potential students to the Graduate School of Biomedical Sciences. Secondly, it gives a comprehensive picture of the School to our community partners.

The Handbook of Operating Procedures (HOOP)

www.uth.tmc.edu/hoop/

The HOOP contains university policies, procedures and guidelines in accordance with The University of Texas *Regent's Rules and Regulations*.

HealthLeader Online Magazine

www.healthleader.uthouston.edu/

This weekly online wellness magazine features health stories on medicine, dentistry, public health, research, personal health, mental health, nutrition and fitness for all ages. Its audience is the general consumer and has a worldwide distribution. Subscriptions are free.

In Touch

<http://www.med.uth.tmc.edu/administration/dean/Dean/communications.htm>

In Touch is a four-page communication from the dean of the Medical School twice a year to constituents. Written as a letter, it provides alumni, friends, parents, and donors an update on happenings at the Medical School.

The Leader Update

<http://publicaffairs.uth.tmc.edu/leaderupdate/index.htm>

The Leader Update is a weekly publication that communicates policy and administrative information and promotes university events and achievements of students, staff and faculty.

Medical School Facts Booklet

This is the Medical School's biennial brochure, featuring the latest facts, figures, and overview information.

News@SPH

www.sph.uth.tmc.edu/enews/archives.asp

This weekly electronic news service to faculty, staff, and students of the School of Public Health provides timely information on and promotion of events, funding and educational opportunities, and recognizes individual achievements and accomplishments.

News of Note

www.med.uth.tmc.edu/comm/news-pubs.htm

This daily E-mail provides subscribers with links to today's headlines on higher education, health, and medicine, and singles out UT faculty making news.

News on the Go

www.uthouston.edu/newsonthego/

This weekly electronic news service provides a timely vehicle for promoting events and announcing major university and individual accomplishments, appointments, policies and other administrative matters.

Recovery Journal

www.geroeducation.org/CAReS_eNews/

The *Recovery Journal* is produced by the CAReS Research Staff in the Center on Aging. It is full of information to assist stroke survivors and their families with the recovery after stroke.

Regents' Rules and Regulations

www.utsystem.edu/bor/rules/homepage.htm

The *Regents' Rules and Regulations* is a comprehensive policy document adopted by the UT Board of Regents that applies to the entire University of Texas System.

Safety Manuals and Forms

www.uth.tmc.edu/safety/man_forms/index.htm

These documents describe the appropriate methods for handling potentially hazardous agents and work situations within the health science center and are intended to assist personnel in maintaining a safe, healthful working and learning environment.

The Starck Truth is the School of Nursing Newsletter from the Office of the dean Patricia Starck. It will be accessible via www.son.uth.tmc.edu later this year.

Scoop

http://med.uth.tmc.edu/comm/Scoop/scoop_index.html

Scoop is a weekly internal publication of the Medical School that includes timely articles of interest to both the academic and general-interest reader.

SPH e-Bulletin

www.sph.uth.tmc.edu/newsletter

The *SPH e-Bulletin* is an internal online publication and is published once per semester. Articles include information about new appointments, faculty, staff, alumni and student honors and awards, and other articles of interest to the public health community.

Student Newsletter "Student Pulse"

www.uth.tmc.edu/sic/News_and_Views.htm

Student Pulse is the university's student newsletter. It is published bimonthly September through May by the Student InterCouncil (SIC) and contains articles pertaining to student issues and concerns.

UT 2 Me

<http://www.med.uth.tmc.edu/administration/dean/Dean/communications.htm>

A weekly e-mail written by Dean Giuseppe Colasurdo to the employees and students of the Medical School, filling them in on items of importance or interest of the preceding week.

The UTDB EXchange

www.db.uth.tmc.edu/DB_publications.htm

The *UTDBEXchange* is the official alumni publication of The UT Dental Branch at Houston. The *EXchange* keeps 5,000 Dental Branch alumni connected to their school by providing updated information on the happenings of our faculty, staff and students. This publication also applauds the accomplishments of Dental Branch alumni.

The UTDBeflash

www.db.uth.tmc.edu/UTDB_eflash/index.htm

The *UTDBeflash* is a weekly electronic publication of The UT Dental Branch at Houston. The eflash provides updated information on events, awards, initiatives, etc., that are important to Dental Branch faculty, staff and students.

UT-Houston Medicine

<http://med.uth.tmc.edu/comm/news-pubs.htm>

UT-Houston Medicine is the Medical School's magazine that showcases the research, education, and clinical accomplishments of the school for its constituents, including alumni and friends. It is published twice a year.

UT Matters

<http://www.uthouston.edu/utmatters/archive/index.htm>

UT Matters, an e-newsletter from Kevin Dillon, the Chief Operating Officer, goes to executive leadership, administrators, faculty and staff at the UT Health Science Center at Houston.

UTSPH Fact Brochure

www.sph.uth.tmc.edu/uploadedfiles/facts2007.pdf

This annual publication includes descriptive and statistical information about the School of Public Health.