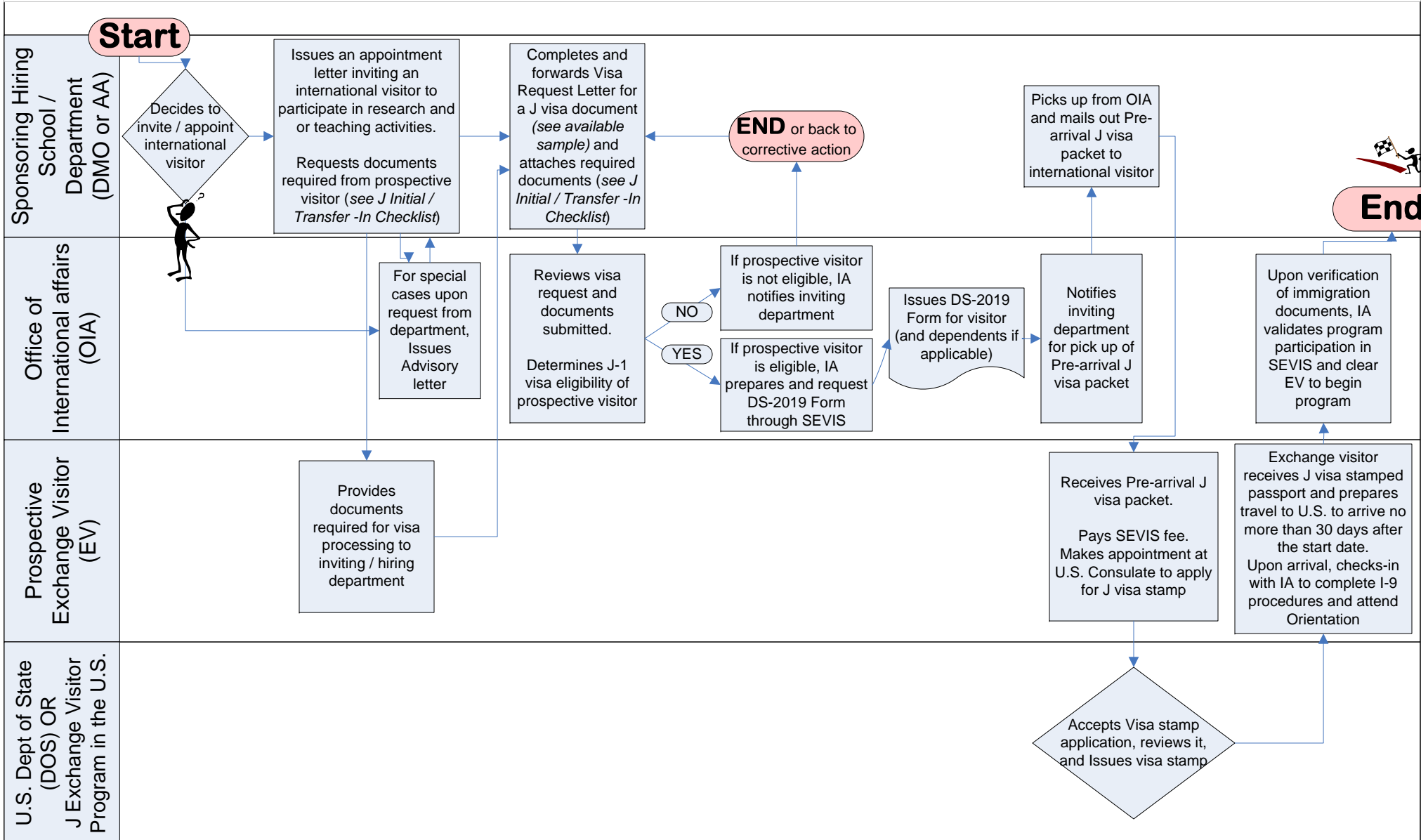




# Visa Process for INITIAL J-1 Exchange Visitors UTHSC-H Sponsored Professors / Research Scholars



An estimated minimum of 2 months time is generally advisable to process an INITIAL J-1 exchange visitor visa for an international visitor (Professor/Research Scholar, Short Term Scholar or Student categories), excluding time for visa change of status application through U.S. Citizenship and Immigration Services, or visa stamp application through a U.S. Consulate abroad.