

**School of Public Health
Alumni Survey Report
2005**

Office of Outcomes Assessment



THE UNIVERSITY of TEXAS
HEALTH SCIENCE CENTER AT HOUSTON

Executive Summary

Study Objective:

The objectives of the study are to collect and analyze alumni perceptions of the educational experience and professional preparation at the University of Texas-School of Public Health (UT-SPH), and to collect and analyze career path, work setting and occupational responsibilities of graduates.

Population

The population for the study is all graduates (MPH, MS, DrPH, PhD) in the graduating classes of 1995, 2000 and 2004 (n=473). The data were collected via a paper-based self administered survey instrument. A total of 135 completed surveys were received for a response rate of 29%. Adjusting the rate for surveys returned as undeliverable (n=67) yields a responses rate of 33%.

Survey Methodology

The survey instrument was initially mailed out on January 11, 2006. The mailing included a survey instrument accompanied by an explanatory cover letter. A second mailing occurred January 18, 2006 and was in the form of a post card. A third mailing occurred on February 1, 2006 and included a revised explanatory cover letter. The survey instrument consisted of Likert type scale response options, mutually exclusive closed-end response options, multiple response options and written comments.

Results

The overall sample is composed of 135 respondents from the 1995 (24.4%), 2000 (28.9%) and the 2004 (46.7%) cohorts. The majority of respondents received the degree of MPH (75.6%), followed by PhD (9.6%), MS (8.1%) and DrPH (6.7%).

The majority of respondents (95.3%) reported that they would recommend UT-H SPH to others who are interested in graduate study in public health. In the 2000 cohort, 97.2% would recommend the School, followed by the 1995 cohort (96.6%), and the 2004 cohort (93.5%).

Modules

The most frequently reported modules are Community Health (20.0%), Health Services Organization (14.1%), Disease Control (11.9%) and Health Promotion/Health Education (11.9%). Epidemiology (12.6%) is the most frequently reported discipline, followed by Behavioral Sciences (8.9%) and Biometry (6.7%). A discipline was not reported for 61.5% of respondents. Of the respondents reporting that they attended a satellite campus (n=21), the San Antonio campus was the most frequently reported (52.4%).

Continuing Education

Additional health education after graduating from UT-SPH was sought by 30.4% of the respondents (20.0% degree seeking, 10.4% non-degree seeking). The 1995 cohort had the largest percent of respondents seeking further health education (33.4%), followed by the 2004 cohort (30.5%) and the 2000 cohort (28.2%). Among the different degree

recipient types, MPH and MS recipients were most likely to pursue additional health education (35.7% and 36.4%).

Resources

When asked what resources were the most helpful in finding their first job after leaving UT-SPH, 75.0% of the respondents replied “Other”. The second most frequently reported resource is “Other UT-SPH resources (faculty, students, job postings, etc.)”, which was cited by 21.4% of the overall sample.

The majority of respondents (78.5%) report holding full-time employment. Educational institutions are the most frequently (37.5%) reported places of employment, followed by hospital or health care providers (25.9%), and government agencies (24.1%).

Present Occupation

The most frequently reported present occupation is “not in public health” (20.9%). Of public health careers, Epidemiologist is the most frequently reported (16.4%), followed by “other public health occupations” (16.4%), behavioral or social scientist (8.2%), and health educator (8.2%).

Job Responsibilities

When respondents were asked about what public health responsibilities they have on their present job, 22.4% relied “Monitoring community health status”. “Educating the public about health issues” was reported by 19.0%, followed by “Conducting research” (14.7%), and “Investigating community health problems and hazards” (11.2%).

Income

The median current annual salary is \$70,000 to \$79,999. There is a significant difference in median salary based on graduation year. Median current annual salary of \$90,000 to \$99,999 was reported in the 1995 cohort. The 2000 cohort reported a median of \$80,000 to \$89,999, and the 2004 cohort reported a median of \$50,000 to \$59,999.

Academic programs and outcomes are spoken of favorably by most respondents. Most of the respondents (77.0%) agreed that the academic standards of UT-H SPH were about right in terms of rigor. They also agreed that the course work enabled them to meet program objectives (79.9%), and that courses were available so that they could finish their programs in a timely manner (82.8%). Overall, 73.1% agreed that UT-H SPH met their expectations.

Comments concerning the thesis/dissertation are mostly favorable. Most respondents (71.6%) felt that the thesis/dissertation was a valuable culminating experience. Seventy-eight percent agreed that it helped them to integrate the breadth of public health knowledge, and 75.4% felt that it gave them the opportunity to apply the knowledge gained in their education towards a relevant public health problem. Only 57.0% felt the thesis/dissertation helped prepared them for a career in public health.

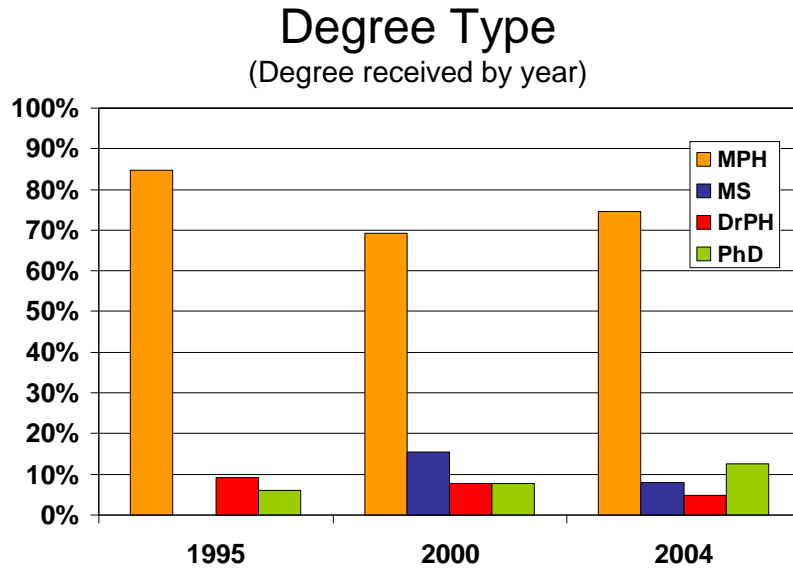
Research and internship opportunities received favorable comments from most respondents. Sixty-one percent of respondents report that the school provided adequate

research opportunity. They also agreed that their research experience at UT-H SPH provided them with the skills to evaluate scientific literature (74.4%), develop solutions to scientific/public health problems (74.2%), and to communicate findings effectively (80.0%).

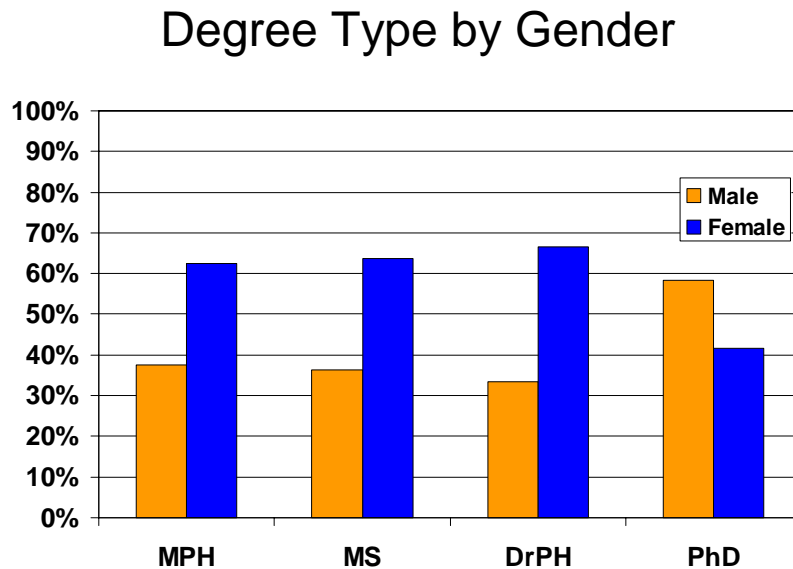
Of the respondents who commented about internships or field experience, these comments were also favorable. The majority of respondents (65.5%) agreed that their internship/practicum helped them put theory into action. They also agreed (68.5%) that the internship/practicum was valuable to their career.

The majority of respondents (53.8%) reported that it took them longer to complete their degree than anticipated. This percentage was significantly different among the different graduating classes. Among 1995 graduates, 26.7% report degree completion taking longer than anticipated. Among 2004 graduates the percentage is 71.0%.

The majority of respondents (95.3%) would recommend UT-H SPH to others who are interested in graduate study in public health.



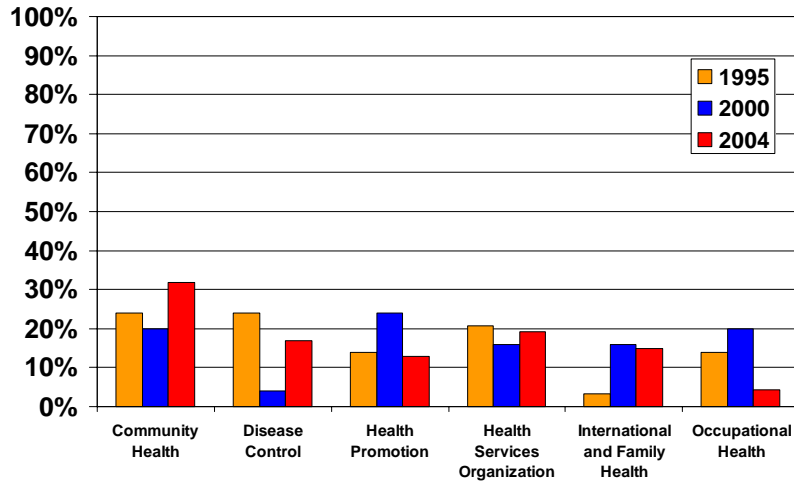
The majority of respondents (75.6%) hold a Master of Public Health (MPH) degree, followed by Doctor of Philosophy (PhD) (9.6%) and Master of Science (8.1%). Finally, 6.7% of respondents hold a Doctor of Public Health degree.



Females make up the majority of the sample (60.9%). They are also the majority across degrees received, with the exception of the PhD in which men hold in a larger percentage (58.3%).

Modules

(Module of Primary Work)

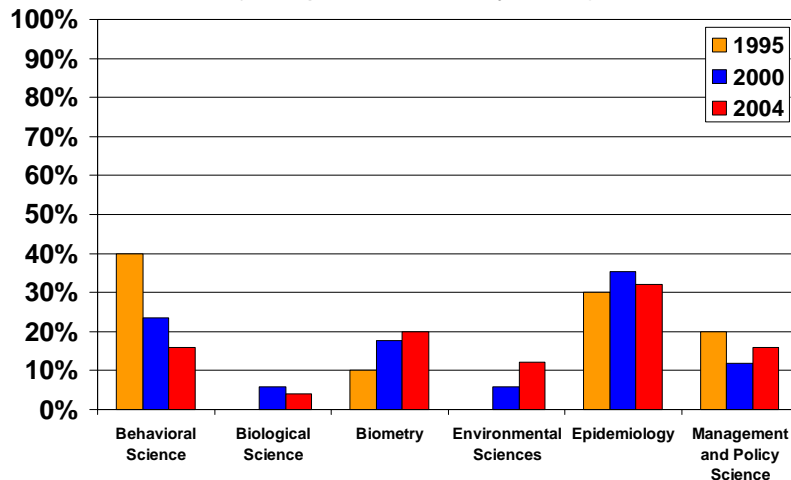


1995 = 23 2000 = 25 2004 = 47

Community Health is the module in which the majority (26.7%) of respondents reported as the primary focus of their work. Health Services Organization is next with 18.8% of respondents reporting it as a primary focus. This was followed by Disease Control and Health Promotion/Education which both have 15.8% of the respondents. Of 135 respondents, 25.2% did not report a module.

Disciplines

(Discipline of Primary Work)

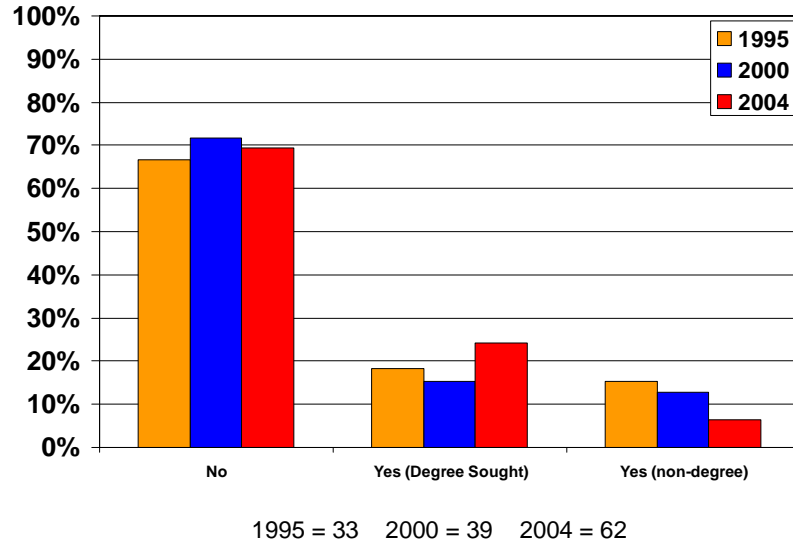


1995 = 10 2000 = 17 2004 = 25

Epidemiology is the discipline of primary focus for most respondents (32.7%). This is followed by Behavioral Sciences (23.1%) and Biometry (17.3%).

Additional Education

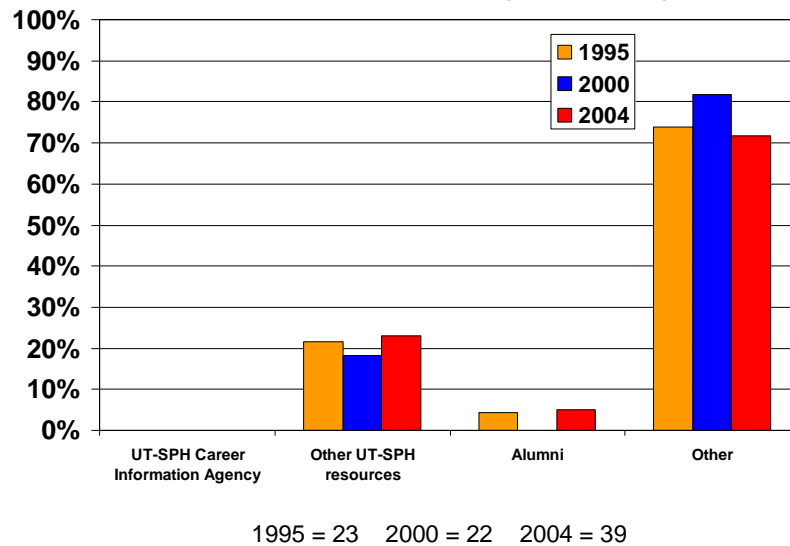
(Pursued further health education since graduating from UT-SPH)



The majority of respondents (68.9%) did not seek any further health education after completing of their degrees at the School of Public Health. This trend is consistent across graduating year cohorts.

First Job Search

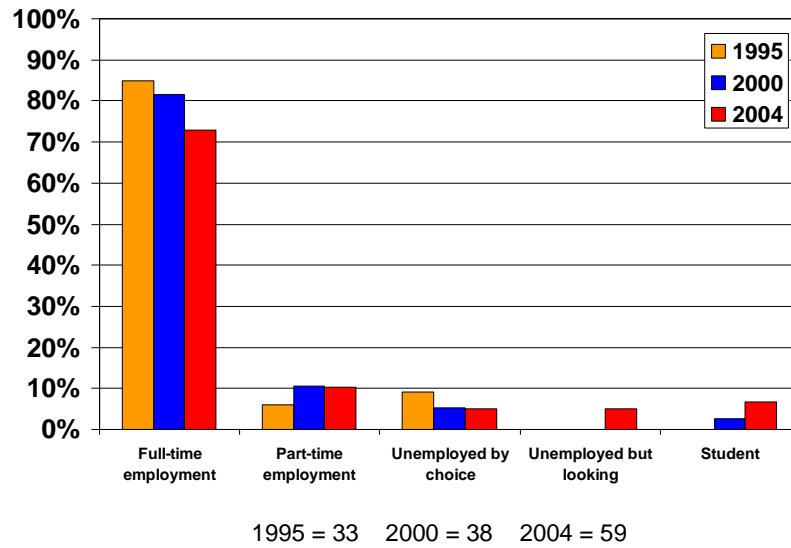
(Which of these were helpful in finding a job after graduation)



Almost half (46.7%) of respondents answered “Other”, when asked what was most helpful in finding a job after leaving UT-SPH. Of those answering “Other”, 28.6%

reported that they were already employed at the completion of their degrees. Another 12.7% reported the internet as being helpful in finding their first job after graduation.

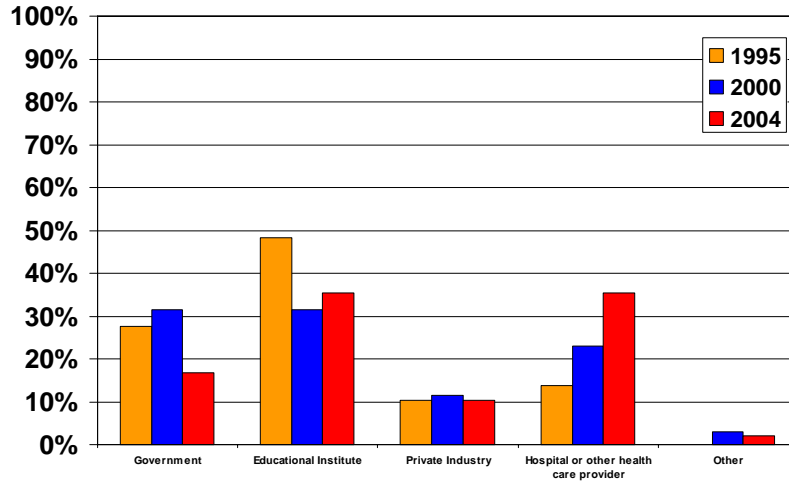
Employment Status



Seventy-five percent of respondents report having full-time employment at the time of the survey. More recent 2004 graduates have a slightly lower percentage of reported full-time employment than earlier graduates. Looking at employment status by degree, 100% of DrPH respondents were working full-time, compared to 92.3% of PhD respondents, 77.6% of MPH respondents and 50.0% of MS respondents.

Place of Employment

(Which organization best describes your place of employment)



1995 = 29 2000 = 35 2004 = 48

The majority of respondents (31.1%) report an Educational Institution as their current place of employment. This is followed by Hospital or other health care providers (21.5%) and Government (20.0%). Government includes Federal, State and Local public health or other health agencies, as well as the US military. Over the years, the number of respondents reporting employment for a Hospital or other health care provider, more than doubled. Across degree types, Educational Institutions are reported most frequently as current place of employment.

Which of the following currently describes you present occupation?

| Occupation | 1995 n (%) | 2000 n (%) | 2004 n (%) | Total Population n (%) |
|--------------------------------------|------------------|------------------|------------------|---------------------------|
| Behavioral or social scientist | 4 (13.8%) | 2 (5.9%) | 3 (6.4%) | 9 (8.2%) |
| Biostatistician | 1 (3.4%) | 1 (2.9%) | 3 (6.4%) | 5 (4.5%) |
| Epidemiologist | 3 (10.3%) | 5 (14.7%) | 10 (21.3%) | 18 (16.4%) |
| Health Educator | 1 (3.4%) | 3 (8.8%) | 5 (10.6%) | 9 (8.2%) |
| Public health physician, dentist | 3 (10.3%) | 2 (5.9%) | 1 (2.1%) | 6 (5.5%) |
| Health planner or policy analyst | 1 (3.4%) | 2 (5.9%) | 1 (2.1%) | 4 (3.6%) |
| Health services administrator | 5 (17.2%) | 2 (5.9%) | 1 (2.1%) | 8 (7.3%) |
| Environmental health specialist | 0 | 2 (5.9%) | 0 | 2 (1.8%) |
| Industrial hygiene safety/specialist | 0 | 1 (2.9%) | 3 (6.4%) | 4 (3.6%) |
| Laboratory scientist | 1 (3.4%) | 1 (2.9%) | 2 (4.3%) | 4 (3.6%) |
| Other public health occupation | 2 (6.9%) | 7 (20.6%) | 9 (19.1%) | 18 (16.4%) |
| Not in public health | 8 (27.6%) | 6 (17.6%) | 9 (19.1%) | 23 (20.9%) |
| Total | 29 (100%) | 34 (100%) | 47 (100%) | 110 (100%) |

The most frequent answer in describing present occupation is “Not in public health” (20.9%). This is followed by Epidemiologist (16.4%) and “Other public health occupation” (16.4%).

By degree types, most MPH respondents reported “Other public health occupations. Most MS respondents reported being Epidemiologist (42.9%). Behavioral or social scientist was the most frequently reported DrPH occupation (62.5%). PhDs reported Biostatistician most often (33.3%).

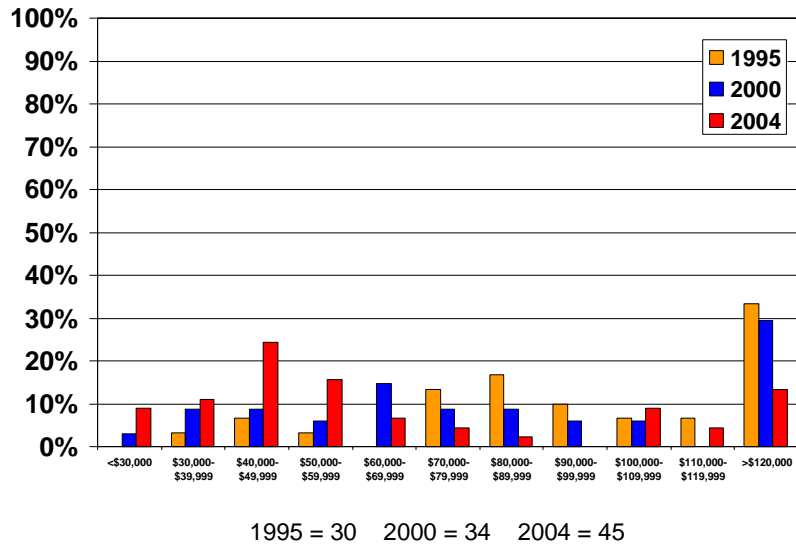
What responsibilities related to public health do you have in your present job?

| Occupation | 1995 n (%) | 2000 n (%) | 2004 n (%) | Total Population n (%) |
|--|------------------|------------------|------------------|---------------------------|
| Monitoring community health | 7 (23.3%) | 9 (24.3%) | 10 (20.4%) | 26 (22.4%) |
| Investigating community health problems | 3 (10.0%) | 6 (16.2%) | 4 (8.2%) | 13 (11.2%) |
| Educating the public about health issues | 9 (30.0%) | 6 (16.2%) | 7 (14.3%) | 22 (19.0%) |
| Organizing community groups | 0 | 0 | 1 (2.0%) | 1 (0.9%) |
| Developing community health policies | 0 | 1 (2.7%) | 0 | 1 (0.9%) |
| Enforcing health and safety laws | 0 | 1 (2.7%) | 3 (6.1%) | 4 (3.4%) |
| Providing personal health services | 2 (6.7%) | 2 (5.4%) | 6 (12.2%) | 10 (8.6%) |
| Educating health personnel | 1 (3.3%) | 2 (5.4%) | 1 (2.0%) | 4 (3.4%) |
| Evaluating health services | 1 (3.3%) | 3 (8.1%) | 2 (4.1%) | 6 (5.2%) |
| Conducting researching | 3 (10.0%) | 3 (8.1%) | 11 (22.4%) | 17 (14.7%) |
| Other | 1 (3.3%) | 0 | 1 (2.0%) | 2 (1.7%) |
| None related to public health | 3 (10.0%) | 4 (10.8%) | 3 (6.1%) | 10 (8.6%) |
| Total | 30 (100%) | 37 (100%) | 49 (100%) | 116 (100%) |

The most frequently reported responsibility related to public health is “Monitoring community health status” (22.4%). Selected responsibilities did show change over the years. The percentage of respondents reporting “Educating the public about health issues” in their present job decreased from 30.0% to 14.3%. The percentage of respondents reporting “Conducting research” as part of their present job more than doubled from 10.0% to 22.4%.

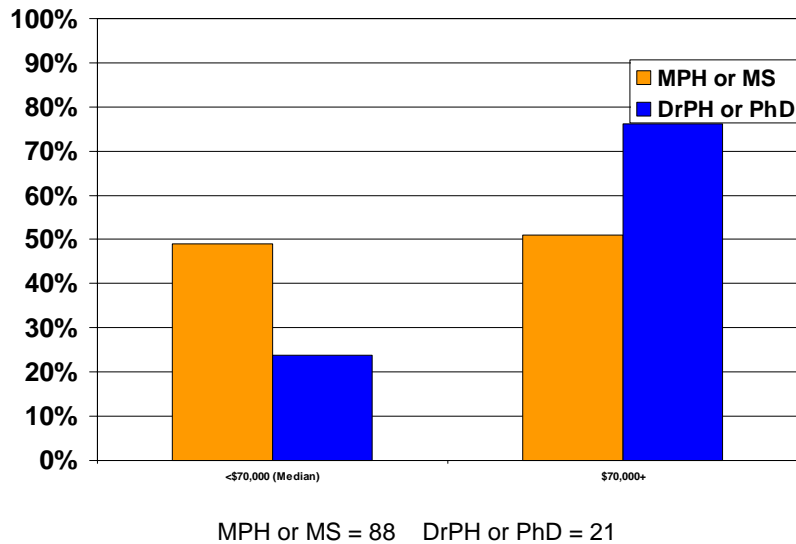
The most frequently reported responsibilities varied among different degree types. “Monitoring community health status” was the most frequently reported among MPH (24.1%) and MS (42.9%) respondents. “Educating the public about health issues” was most frequently reported among DrPH respondents (22.2%). PhD respondents reported “Conducting research” most frequently (38.5%).

Current Annual Salary Range



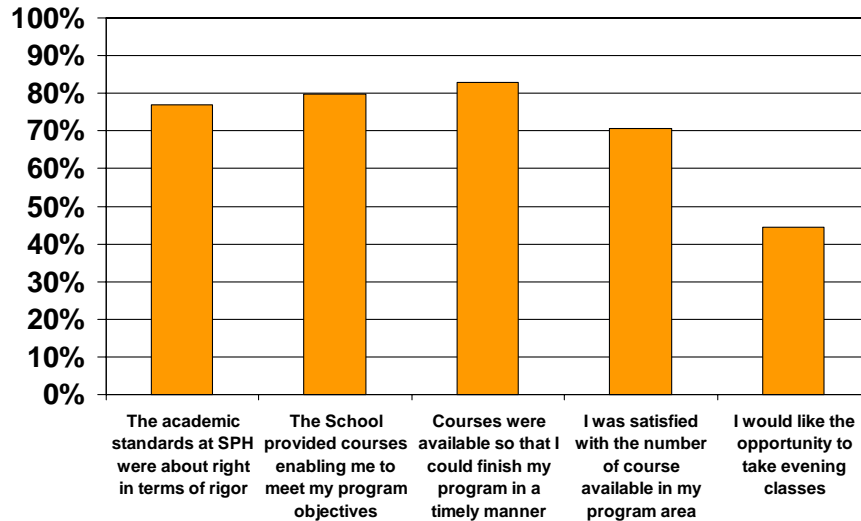
The primary trend in the graph above shows that salary increases as career experience increases. The median salary category is \$70,000 to \$79,999. Respondents who graduated in 1995 are the top earners, followed by 2000 graduates and 2004 graduates. Looking at the top earners (>\$120,000), 1995 graduates have a higher percentage (33.3%) of top earners than respondents graduating more recently.

Current Annual Salary Range by Degree



A significantly larger percentage of DrPH/PhD graduates are at or above the median salary when compared to the MPH/MS graduates.

Academic Programs and Outcomes (percent strongly agree/agree)



ACADEMIC PROGRAMS AND OUTCOMES

The academic standards at the School of Public Health were about right in terms of rigor.

This question received a response of agree/strongly agree from 77.0% of respondents in the overall sample. Responses range from 70.2% of the 2004 cohort to 86.7% in the 2000 cohort. In the overall sample, 14.9% reported a “neutral” response.

The School provided courses enabling me to meet my program objectives.

This question received a response of agree/strongly agree from 79.9% of respondents in the overall sample. Respondents from 1995 were in the most agreement (87.9%) when compared to 2000 (84.6%), and 2004 (72.6%).

Courses were available so that I could finish my program in a timely manner.

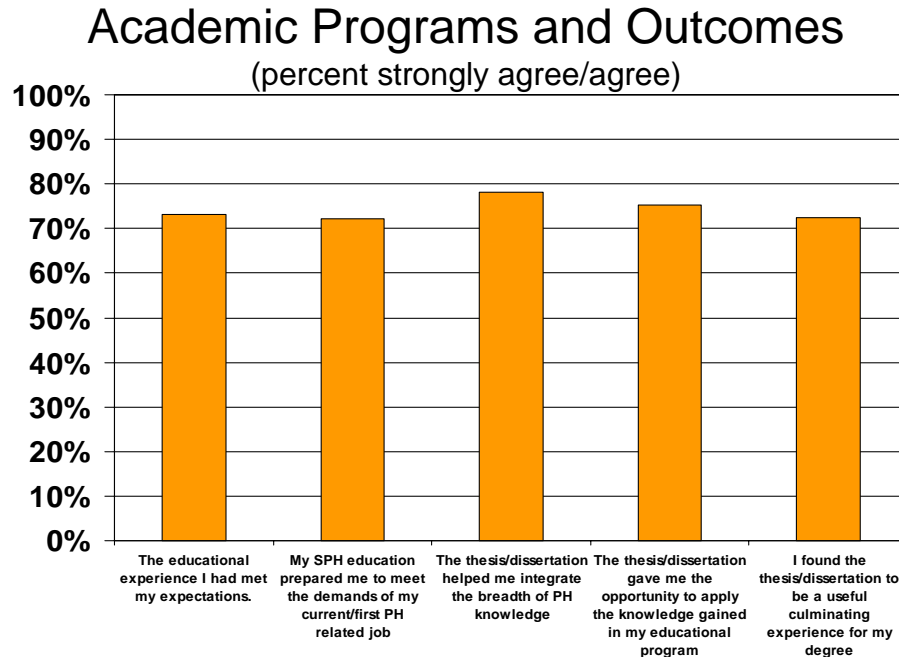
This question received a response of agree/strongly agree from 82.8% of respondents in the overall sample. Respondents from 1995 were in the most agreement (90.9%), compared to 2000 (89.7%), and 2004 (74.2%).

I was satisfied with the number of courses available in my program area.

This question received a response of agree/strongly agree from 70.7% of respondents in the overall sample. The largest percent in agreement are the 1995 respondents. This was followed by the 2000 (71.8%) and 2004 respondents (65.6%)

I would have liked the opportunity to take evening classes.

Less than half (44.5%) of respondents agree/strongly agree that they would have liked to take evening classes. Almost one third (30.5%) had a neutral opinion. Respondents for all three years had similar responses, with agreement ranging from 43.2% to 45.5%.



The educational experience I had as a student at the School of Public Health met my expectations.

This question received a response of agree/strongly agree from 73.1% of respondents in the overall sample, but that percentage decreased across the cohorts. Of the 1995 graduates, 84.8% agreed, but among the 2004 graduates, only 62.9% agreed.

My UT-H SPH education has prepared me to meet the demands of my current or first public-health related job after leaving the School.

This question received a response of agree/strongly agree from 72.1% of respondents in the overall sample. Among the 3 cohorts, agreement ranged from 75.0% (1995) to 66.7% (2004).

The thesis/dissertation helped me to integrate the breadth of public health knowledge.

This question received a response of agree/strongly agree from 78.2% of respondents in the overall sample. Among the 3 cohorts, agreement ranged from 81.3% (1995) to 75.8% (2004).

The thesis/dissertation gave me the opportunity to apply the knowledge that I gained in my educational program towards a relevant public health problem.

This question received a response of agree/strongly agree from 75.4% of respondents in the overall sample. The 3 cohorts had very similar responses to this question. The percentage of agreement ranged from 74.2% (2004) to 76.9% (2000).

I found the thesis/dissertation to be a useful culminating experience for my degree program.

This question received a response of agree/strongly agree from 72.4% of respondents in the overall sample. Responses range from 74.4% of the 2000 cohort to 71.0% in the 2004 cohort. In the overall sample, 14.9% reported a “neutral” response.

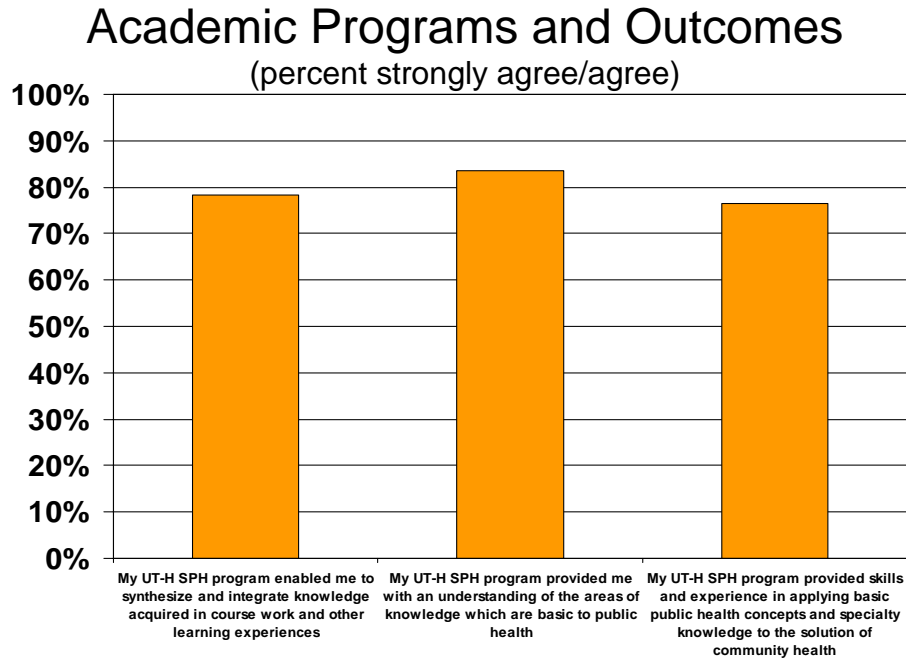
The thesis/dissertation helped to prepare me for a public health career.

In the overall sample, 57.0% of respondents agree/strongly agree that the thesis/dissertation prepared them for a career in public health. Among the 3 cohorts, agree/strongly agree ranged from 55.0% (2004) to 59.5% (2000). “Neutral” was the response for 26.6% of the overall sample.

Do you think your thesis/dissertation was a valuable culminating experience?

In the overall sample, 71.6% of respondents agree/strongly agree that the thesis/dissertation was a valuable culminating experience. There are similar impression between the cohorts with agree/strongly agree ranging from 69.4% (2004) to 74.4% (2004).

ACADEMIC PROGRAMS AND OUTCOMES (For MPH and DrPH graduates only)



My UT-SPH program enabled me to synthesize and integrate the knowledge acquired in course work and other learning experiences.

The question receives a response of agree/strongly agree from 78.4% of respondent in the overall sample. There was some change in agreement across the cohorts, with the 1995 cohort having the largest percentage of those agreeing (87.1%), and the 2004 cohort having the lowest percentage of agreeing (69.8%).

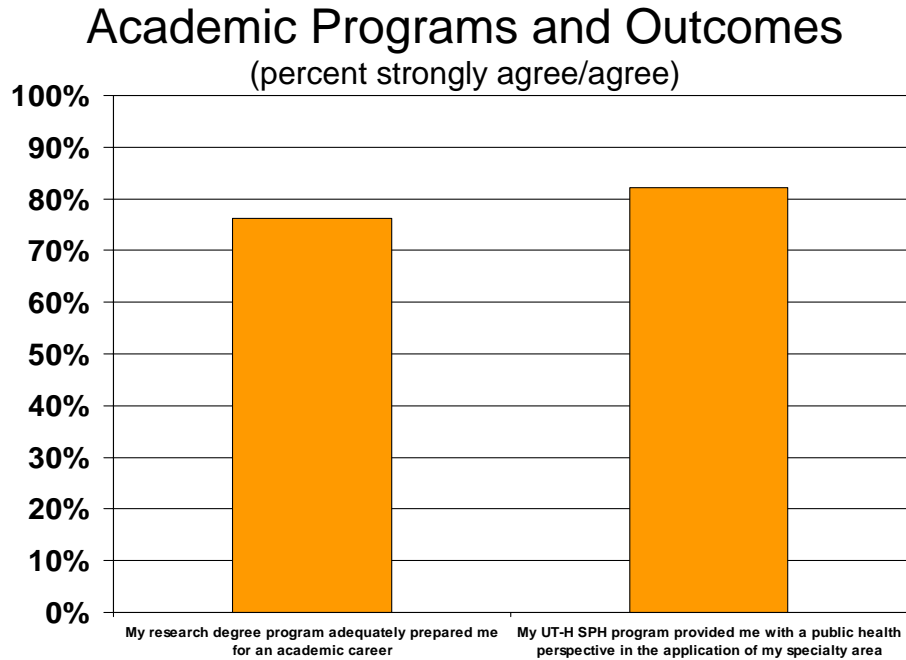
My UT-SPH program provided me with an understanding of the areas of knowledge which are basic to public health (biostatistics, epidemiology, environmental sciences, health services, administration, social and behavioral sciences).

The question received a response of agree/strongly disagree from 83.5% of respondents in the overall sample. Responses ranged from 75.5% in the 2004 cohort to 90.3% in both the 1995 and 2000 cohorts.

My UT-SPH program provided skills and experience in applying basic public health concepts and specialty knowledge to the solution of community health problems.

The question received a response of agree/strongly agree from 76.5% of the respondents in the overall sample. There was a large change in agreement between the 2000 cohort (90.3%) and the 2004 cohort (66.0%). There was also a large change between these cohorts in the percentage of individuals answering “neutral” (9.7% to 24.5%).

ACADEMIC PROGRAMS AND OUTCOME (For MS and PhD graduates only)



My research degree program adequately prepared me for an academic career.

The question received a response of agree/strongly agree from 76.3% of respondents in the overall sample. Agreement ranged from 66.7% in the 2000 cohort, to 87.5% in the 1995 cohort. In the overall sample, 15.8% of respondents recorded “neutral” as a response.

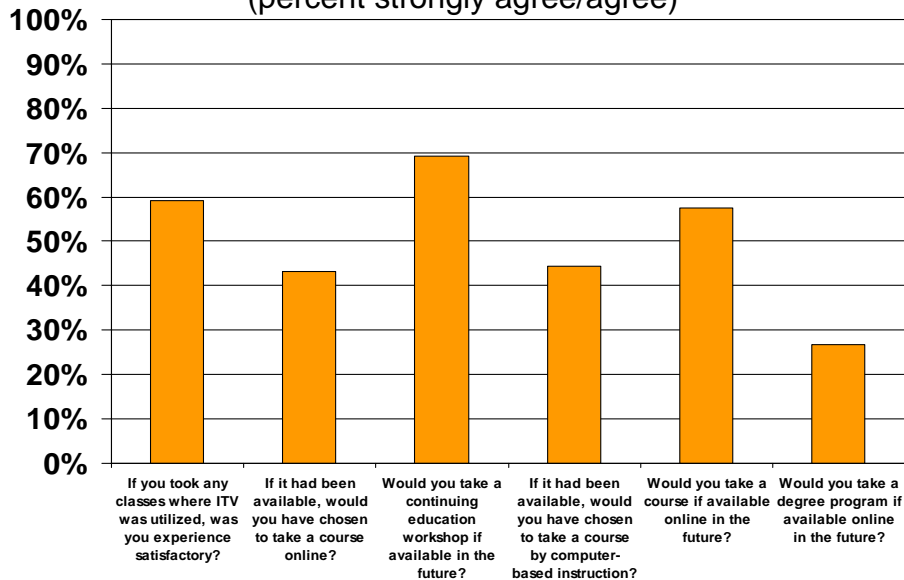
My UT-SPH degree program provided me with a public health perspective in the application of my specialty area.

The question received a response of agree/strongly agree from 82.1% of respondents in the overall sample. Agreement ranged from 75.0% in the 2000 cohort, to 100% in the 1995 cohort. In the overall sample, 15.8% of respondents recorded “neutral” as a response.

EDUCATIONAL TECHNOLOGY

Academic Programs and Outcomes

(percent strongly agree/agree)



If you took any classes where Interactive Television (ITV) was utilized, was your experience satisfactory?

In the overall sample, more than half (59.2%) of respondents answered “no” to this question. A closer look at the cohorts found that there are significant differences in satisfaction among graduation years. In the 1995 cohort, satisfaction was very low with only 10.3% of respondents answering “yes”. In the 2000 cohort there was significant improvement, with 47.1% of respondents answering yes. In the 2004 cohort, the majority of respondents (52.6%) recorded that, “yes”, they were satisfied with ITV.

If it had been available, would you have chosen to take a course online?

In the overall sample, less than half of the respondents (43.3%) reported that they would have taken a course online if it were available. This is consistent across the cohorts with the percentage of “yes” responses ranging from 40.5% in the 2000 cohort, to 45.9% in the 2004 cohort.

Would you take a continuing education workshop if available online in the future?

In the overall sample, 69.3% of respondents reported that they would take a continuing education workshop, if it was available online. This is consistent across the cohorts with the percentage of “yes” responses ranging from 65.5% in the 1995 cohort, to 69.4% in the 2000 cohort.

If it had been available, would you have chosen to take a course by computer-based instruction?

In the overall sample, less than half (44.4%) of respondents report that they would have chosen to take a course by computer-based instruction. This is consistent across the cohorts, with percentages of “yes” responses ranging from 38.9% in the 2000 cohort to 49.2% in the 2004 cohort.

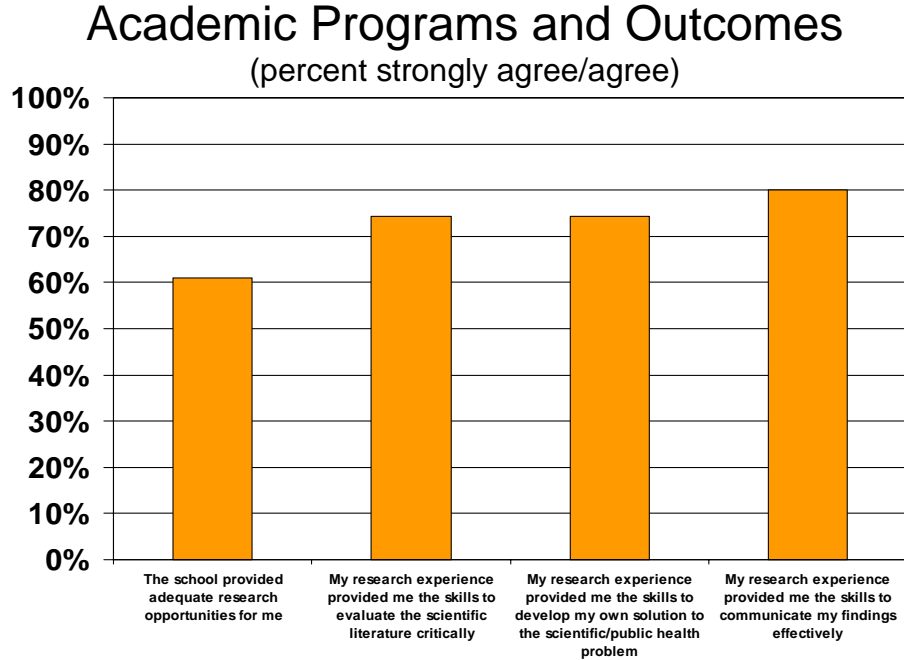
Would you take a course if available online in the future?

In the overall sample, more than half of the respondents (57.6%) reported that they would be willing to take a course online in the future. This is consistent across the cohorts, with percentage of “yes” responses ranging from 55.2% in the 1995 cohort to 58.3% in the 2004 cohort.

Would you take a degree program if available online in the future?

In the overall sample, less than a third of the respondents (26.8%) reported that they would be willing to take a degree program if it were available online in the future. This is consistent across the cohorts, with percentage of “yes” responses ranging from 18.9% in the 2000 cohort to 31.0% in the 1995 cohort.

RESEARCH/INTERNSHIP EXPERIENCE



The school provided adequate research opportunities for me.

This question received a response of agree/strongly agree from 61.1% of respondents in the overall sample. Agreement was the highest in 2000 (74.3%), and lower in 1995 (55.2%) and 2004 (57.4%). In the overall sample, 25.6% of respondents recorded “neutral” as a response.

My research experience provided me the skills to evaluate the scientific literature critically.

This question received a response of agree/strongly agree from 74.4% of respondents in the overall sample. Agreement ranged from 65.5% in the 1995 cohort, to 82.9% in the 2000 cohort. In the overall sample, 20.0% of respondents recorded “neutral” as a response.

My research experience provided me the skills to develop my own solution to the scientific/public health problem.

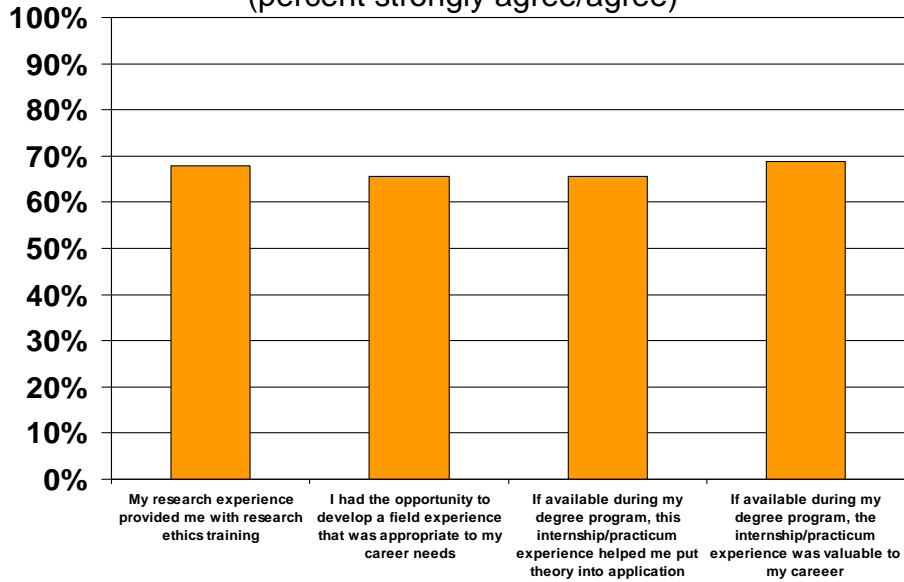
This question received a response of agree/strongly agree from 74.2% of respondents in the overall sample. Agreement was 82.1% and 82.9% in the 1995 and 2000 cohorts. Agreement was lower in the 2004 cohort at 65.6%. In the overall sample, 20.2% of respondents recorded “neutral” as a response.

My research experience provided me the skills to communicate my findings effectively.

This question received a response of agree/strongly agree from 80.0% of respondents in the overall sample. Agreement was highest in the 2000 cohort with 91.4% responding agree/strongly agree. Percentages were similar in 1995 (75.9%) and 2004 (75.4%). In the overall sample, 16.8% of respondents recorded a “neutral” response.

Academic Programs and Outcomes

(percent strongly agree/agree)



My research experience provided me with research ethics training.

This question received a response of agree/strongly agree from 68.0% of respondents in the overall sample. Agreement was fairly similar across the cohorts, ranging from 65.5% in the 1995 cohort, to 74.3% in the 2000 cohort. In the overall sample, 25.6% of respondents recorded a “neutral” response.

I had the opportunity to develop a field experience that was appropriate to my career needs.

This question received a response of agree/strongly agree from 65.5% of respondents in the overall sample. Agreement was fairly similar across the cohorts, ranging from 60.7% in the 1995 cohort, to 68.8% in the 2000 cohort. The differences in the cohorts were in those answering disagree/strongly disagree. In the 1995 cohort, 32.1% of respondents answered disagree/strongly disagree. Only 6% of respondents in 2000 and 2004 answered disagree/strongly disagree. These groups were significantly different.

If available during my degree program, this internship/practicum experience helped me put theory into application.

This question received a response of agree/strongly agree from 65.5% of respondents in the overall sample. Agreement ranged from 60.7% in the 1995 cohort to 68.8% in the 2000 cohort. The percentage of “neutral” responses was different across the cohorts. Only 7.1% of the 1995 cohort answered “neutral”, in contrast to 25.0% and 27.1% in the 2000 and 2004 cohorts. These differences are significant.

If available during my degree program, the internship/practicum experience was valuable to my career.

This question received a response of agree/strongly agree from 68.9% of respondents in the overall sample. Agreement varied among the cohorts, with 86.4% of the 2000 cohort agreeing, and 58.0% agreeing in the 2004 cohort. In the overall sample, 24.4% of respondents recorded a “neutral” response.

COMMENTS

Did it take you longer to get your degree than anticipated?

In the overall sample, 53.8% of the respondents reported that it took them longer to get their degree than anticipated. There was a significant difference in this percentage across cohorts. In the 1995 cohort, 26.7% of respondents responded “yes”. This percentage increased to 47.4% in the 2000 cohort, and 71.0% in the 2004 cohort.

Overall Sample

| Degree took longer than anticipated | Count | Percent |
|-------------------------------------|-------|---------|
| Yes | 70 | 53.8% |
| No | 60 | 46.2% |

By Graduating Year Cohort

| Graduating year | Yes n (%) | No n (%) |
|-----------------|--------------|-------------|
| 1995 | 8 (26.7%) | 22 (73.3%) |
| 2000 | 18 (47.4%) | 20 (52.6%) |
| 2004 | 44 (71.0%) | 18 (29.0%) |
| All Years | 70 (53.8%) | 60 (46.2%) |

p=.00

By Degree Type

| Degree | Yes n (%) | No n (%) |
|-------------|--------------|-------------|
| MPH | 51 (52.0%) | 47 (48.0%) |
| MS | 7 (63.6%) | 4 (36.4%) |
| DrPH | 6 (66.7%) | 3 (33.3%) |
| PhD | 6 (50.0%) | 6 (50.0%) |
| All Degrees | 70 (53.8%) | 60 (46.2%) |

p=.74

What would have helped you complete your degree sooner?

| Comments | Count | Percent |
|--------------------------|-------|---------|
| Nothing | 17 | 12.6% |
| Not working full-time | 7 | 5.2% |
| Evening classes | 6 | 4.4% |
| Better advisor relations | 5 | 3.7% |

What skills acquired at UT-H SPH have been the most useful in your career?

| Comment | Count | Percent |
|---------------------|-------|---------|
| Statistics | 18 | 13.3% |
| Epidemiology | 14 | 10.4% |
| Research skills | 11 | 8.1% |
| Evaluating research | 5 | 3.7% |

What aspects of public health practice or research were not adequately addresses in your program at UT-H SPH?

| Comment | Count | Percent |
|----------------------|-------|---------|
| None | 10 | 7.4% |
| Statistics | 5 | 3.7% |
| Statistical Software | 3 | 2.2% |

Of those respondents who had comments, 10 of them felt that everything was adequately covered in their program. Of the other comments, many respondents commented about biostatistics. They specifically felt as if applied statistical analysis was not adequately addressed in their programs. They felt unprepared to apply biostatistics to research questions, and they wanted some instruction on the use of statistical software. Many of them were interested in applying statistics to epidemiological problems. There were also quite a few respondents who would have liked more courses on writing grants and/or scientific articles for publication.

What was the greatest strength of the UT-SPH during your degree program?

Of the 114 respondents who answered this question, 48 (42%) listed the faculty as the greatest strength of their UT-SPH program. The respondents feel that the faculty who instructed them were very good at what they did, and were committed to research and teaching. Respondents additionally described the faculty as supportive and attentive. Students also felt that it was a strength of the school that the faculty had such diverse interests, and were able to introduce them to a broad spectrum of public health knowledge.

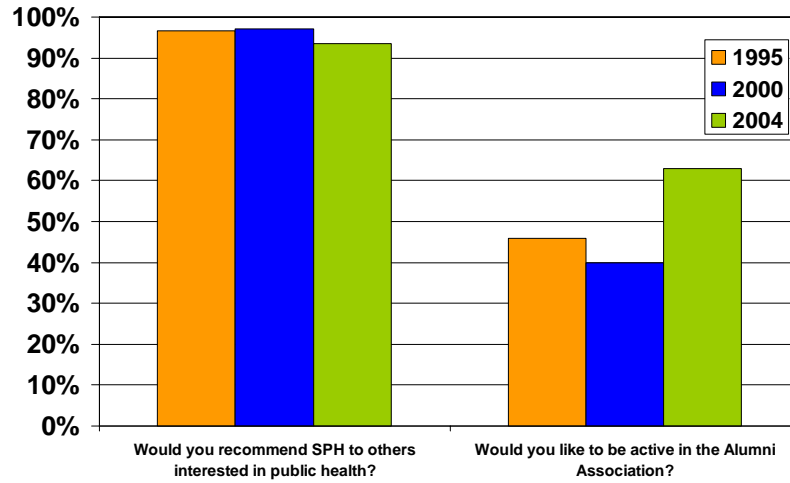
Several students also felt that the flexibility to take courses that interest them and the flexibility to choose from a wide variety of courses is also a school strength.

What was the greatest weakness of UT-H SPH during your program?

The comments did not seem to focus around a central theme, but there were more than a few students who commented on course availability. Respondents wanted classes offered in the evening, and they also wanted more classes offered in very specific topics that they were interested in.

GENERAL SATISFACTION

General Satisfaction



1995=29 2000=36 2004=62

Would you recommend UT-H SPH to others who are interested in graduate study in public health?

In the overall sample, 95.3% of the respondents reported that they would recommend UT-H SPH to others in graduate study in public health. The “yes” responses ranged from 93.5% in the 2004 cohort, to 97.2% in the 2000 cohort.

Would you like to be active in alumni association activities/luncheons, etc.?

In the overall sample, 52.0% of the respondents reported that they would like to be active in alumni association activities. The 2004 cohort had the highest percentage of “yes” responses with 63.0%. The 1995 and 2000 cohorts were lower at 45.8% and 40.0%.

Appendices

Survey Instrument



ALUMNI SURVEY

- 1. Gender: Male Female

- 2. UT-SPH degree(s)
 MPH Year Completed _____ DrPH Year Completed _____
 MS Year Completed _____ PhD Year Completed _____

- 3. Module, regional campus, or discipline of your primary work at UT-SPH (*Check only one*)

| | | |
|---|---|--|
| Modules | Disciplines | Regional / Satellite Campuses |
| <input type="checkbox"/> Community Health Practice | <input type="checkbox"/> Behavioral Sciences | <input type="checkbox"/> Brownsville Program |
| <input type="checkbox"/> Disease Control | <input type="checkbox"/> Biological Sciences | <input type="checkbox"/> Dallas Program |
| <input type="checkbox"/> Health Promotion/Health Education | <input type="checkbox"/> Biometry | <input type="checkbox"/> El Paso Program |
| <input type="checkbox"/> Health Services Organization | <input type="checkbox"/> Environmental Sciences | <input type="checkbox"/> San Antonio Program |
| <input type="checkbox"/> International & Family Health | <input type="checkbox"/> Epidemiology | |
| <input type="checkbox"/> Occupational Health/Aerospace Medicine | <input type="checkbox"/> Management & Policy Sciences | |
| <input type="checkbox"/> Human Ecology | | |
| <input type="checkbox"/> Population Studies & Nutrition | | |
| <input type="checkbox"/> Urban Health | | |

- 4. Have you pursued further health education since graduating from UT-SPH?
 No Yes (degree sought) Yes (non-degree)

- 5. Which of these did you find helpful in finding your first job after leaving UT-SPH?
 UT-SPH Career Information Agency – Newsletter
 Other UT-SPH resources (faculty, students, posted job notices, etc. (*specify*)

 Alumni
 Other
(*specify*) _____

- 6. What is your current employment status? (*Check all that apply*)
 Employed full-time Employed part-time Unemployed by choice Unemployed but looking Student

- 7. What is your current job title, and the name and location of your place of employment? (*If unemployed, skip to question 13*)

| | | |
|--------------------------------|---|----------------------------|
| _____ | _____ | _____ |
| <i>Your title, rank, etc.</i> | <i>Name of Company/Agency/Institution</i> | <i>Department/Division</i> |
| _____ | _____ | _____ |
| <i>Street Address/P.O. Box</i> | <i>City</i> | <i>State</i> |
| | | <i>Zip Code</i> |

- 8. Of the following types of organizations, which one best describes your current place of employment?

| | |
|--|--|
| Government | Educational Institution |
| <input type="checkbox"/> Local public health or other health agency | <input type="checkbox"/> College or university |
| <input type="checkbox"/> State public health or other health agency | <input type="checkbox"/> School of public health |
| <input type="checkbox"/> Federal public health or other health agency | <input type="checkbox"/> School of another health profession (<i>specify</i>) _____ |
| <input type="checkbox"/> US military (<i>specify branch</i>) _____ | <input type="checkbox"/> Other educational institution (<i>specify</i>) _____ |
| <input type="checkbox"/> Other government agency (<i>specify</i>) _____ | |

 Hospital or other health care provider Community-based organization Private industry or firm
 Private, non-profit or voluntary agency International agency Other (*specify*)

9. Which of the following best describes your present occupation?
- | | |
|--|---|
| <input type="checkbox"/> Behavioral or social scientist <input type="checkbox"/> Biostatistician <input type="checkbox"/> Epidemiologist <input type="checkbox"/> Health Educator <input type="checkbox"/> Public or community health nurse <input type="checkbox"/> Public community health physician, dentist | <input type="checkbox"/> Health planner or policy analyst <input type="checkbox"/> Health services administrator <input type="checkbox"/> Environmental health specialist <input type="checkbox"/> Industrial hygienist or safety specialist <input type="checkbox"/> Laboratory scientist <input type="checkbox"/> Other public health occupation (<i>specify</i>) _____ <input type="checkbox"/> Not in public health |
|--|---|
10. What responsibilities related to public health do you have in your present job? (*check all that apply*)
- | | |
|--|---|
| <input type="checkbox"/> Monitoring community health status <input type="checkbox"/> Investigating community health problems and hazards <input type="checkbox"/> Educating the public about health issues <input type="checkbox"/> Organizing community groups to solve health problems <input type="checkbox"/> Developing community health policies and programs <input type="checkbox"/> Enforcing health and safety laws and regulations | <input type="checkbox"/> Providing personal health services <input type="checkbox"/> Educating health personnel <input type="checkbox"/> Evaluating personal and community health services <input type="checkbox"/> Conducting research <input type="checkbox"/> Other (<i>specify</i>) _____ <input type="checkbox"/> None related to public health |
|--|---|
11. Prospective students often ask about the range of salaries available to graduates in the many public health disciplines. If you would indicate your current annual salary range below, it would help us inform these graduates.
- | | |
|---|--|
| <input type="checkbox"/> Under \$30,000 <input type="checkbox"/> \$30,000 – 39,999 <input type="checkbox"/> \$40,000 – 49,999 <input type="checkbox"/> \$50,000 – 59,999 <input type="checkbox"/> \$60,000 – 69,999 <input type="checkbox"/> \$70,000 – 79,999 | <input type="checkbox"/> \$80,000 – 89,999 <input type="checkbox"/> \$90,000 – 99,999 <input type="checkbox"/> \$100,000 – 109,999 <input type="checkbox"/> \$110,000 – 119,999 <input type="checkbox"/> > \$120,000 |
|---|--|

The remaining questions are about your educational experience at UT-SPH.

Please indicate the extent to which you agree with the following statements. (1 = strongly agree, 5 = strongly disagree)

ACADEMIC PROGRAMS AND OUTCOME (*For all graduates*)

| | | Strongly Agree | | | Strongly Disagree | |
|-----|---|----------------|---|---|-------------------|---|
| 12. | The academic standards at the School of Public Health were about right in terms of rigor. | 1 | 2 | 3 | 4 | 5 |
| 13. | The school provided courses enabling me to meet my degree program objectives. | 1 | 2 | 3 | 4 | 5 |
| 14. | Courses were available so that I could finish my program in a timely manner. | 1 | 2 | 3 | 4 | 5 |
| 15. | I was satisfied with the number of courses available in my program area. | 1 | 2 | 3 | 4 | 5 |
| 16. | I would have liked the opportunity to take evening classes. | 1 | 2 | 3 | 4 | 5 |
| 17. | The educational experience I had as a student at the School of Public Health met my expectations. | 1 | 2 | 3 | 4 | 5 |
| 18. | My UT-H SPH education has prepared me to meet the demands of my current or first public-health related job after leaving the School. | 1 | 2 | 3 | 4 | 5 |
| 19. | The thesis/dissertation helped me to integrate the breadth of public health knowledge. | 1 | 2 | 3 | 4 | 5 |
| 20. | The thesis/dissertation gave me the opportunity to apply the knowledge that I gained in my educational program toward a relevant public health problem. | 1 | 2 | 3 | 4 | 5 |
| 21. | I found the thesis/dissertation to be a useful culminating experience for my degree program. | 1 | 2 | 3 | 4 | 5 |
| 22. | The thesis/dissertation helped to prepare me for a public health career. | 1 | 2 | 3 | 4 | 5 |
| 23. | Do you think your thesis/dissertation was a valuable culminating experience? | 1 | 2 | 3 | 4 | 5 |

Strongly

Strongly

ACADEMIC PROGRAMS AND OUTCOME (For MPH and DrPH graduates only)

| | | Agree | | | Disagree | |
|-----|---|-------|---|---|----------|---|
| 24. | My UT-H SPH program enabled me to synthesize and integrate knowledge acquired in course work and other learning experiences. | 1 | 2 | 3 | 4 | 5 |
| 25. | My UT-H SPH program provided me with an understanding of the areas of knowledge which are basic to public health (biostatistics, epidemiology, environmental sciences, health services administration, social and behavioral sciences). | 1 | 2 | 3 | 4 | 5 |
| 26. | My UT-H SPH program provided skills and experience in applying basic public health concepts and specialty knowledge to the solution of community health problems. | 1 | 2 | 3 | 4 | 5 |

ACADEMIC PROGRAMS AND OUTCOME (For MS and PhD graduates only)

| | | Strongly Agree | | | Strongly Disagree | |
|-----|--|----------------|---|---|-------------------|---|
| 27. | My research degree program adequately prepared me for an academic career. | 1 | 2 | 3 | 4 | 5 |
| 28. | My UT-H SPH degree program provided me with a public health perspective in the application of my specialty area. | 1 | 2 | 3 | 4 | 5 |

EDUCATIONAL TECHNOLOGY

| | | | |
|-----|--|-----|-----|
| 29. | If you took any classes where Interactive Television (ITV) was utilized, was your experience satisfactory? | Yes | N/A |
| 30. | If it had been available, would you have chosen to take a course online? | Yes | No |
| 31. | Would you take a continuing education workshop if available online in the future? | Yes | No |

| | | | |
|-----|--|-----|----|
| 32. | If it had been available, would you have chosen to take any of your courses by computer-based instruction (using e-mail, internet, and web)? | Yes | No |
| 33. | Would you take a course if available online in the future? | Yes | No |
| 34. | Would you take a degree program if available online in the future? | Yes | No |

RESEARCH/INTERNSHIP EXPERIENCE

| | | Strongly Agree | | | Strongly Disagree | |
|-----|--|----------------|---|---|-------------------|---|
| 35. | The school provided adequate research opportunities for me. | 1 | 2 | 3 | 4 | 5 |
| 36. | My research experience provided me the skills to evaluate the scientific literature critically. | 1 | 2 | 3 | 4 | 5 |
| 37. | My research experience provided me the skills to develop my own solution to the scientific/public health problem. | 1 | 2 | 3 | 4 | 5 |
| 38. | My research experience provided me the skills to communicate my findings effectively. | 1 | 2 | 3 | 4 | 5 |
| 39. | My research experience provided me with research ethics training. | 1 | 2 | 3 | 4 | 5 |
| 40. | I had the opportunity to develop a field experience that was appropriate to my career needs. | 1 | 2 | 3 | 4 | 5 |
| 41. | If available during my degree program, the internship/practicum experience helped me to put theory into application. | 1 | 2 | 3 | 4 | 5 |
| 42. | If available during my degree program, the internship/practicum experience was valuable to my career. | 1 | 2 | 3 | 4 | 5 |

COMMENTS

43. Did it take you longer to get your degree than you anticipated? _____
44. What would have helped you complete your degree sooner?
45. What skills acquired at UT-H SPH have been most useful in your career?

46. What aspects of public health practice or research were not adequately addressed in your program at UT-H SPH?

GENERAL SATISFACTION

47. What was the greatest strength of UT-H SPH during your degree program?

48. What was the greatest weakness of UT-H SPH during your degree program?

49. Would you recommend UT-H SPH to others who are interested in graduate study in public health? Yes No

50. Would you like to be active in alumni association activities/luncheons, etc.? Yes No

CPHS Approved December/2005

Comments

Question 5 “Which if these did you find helpful in finding your first job after leaving UT-SPH? (specify)”

already had job

1. I was a faculty member in MDACC before MPH program
2. None, have not found a position in public health. (working in dental field) not community health nor public health.
3. did continue with PhD in Biomedical Sciences at UT GSBS.
4. Still looking for job
5. I was already in the UT system (medical school) so I stayed here.

Question 7 “What is your current job title, and the name and location of your place of employment?”

1. Associate Professor, UT Medical Branch, Emergency Medicine, 301 University Blvd., Galveston, TX 77555.
2. Assistant Professor, TWU-Houston, Nursing, 1130 John Freeman, Houston, TX, 77030
3. Asst. Dir. Safety, Texas Children’s Hospital, Safety 6621 Fannin, Houston, TX 77030
4. Associate EM, UT Houston Medical School, EM
5. Asst. Prof., UT MC Anderson Cancer Center, Dept, of Sympton Research, 1100, Holcombe, Blvd., Hous., TX 77030
6. GRA, MD Anderson Cancer Center, Molecular Genetics, 6767 Bertner Street, Houston, TX 77030
7. Dentist, Dental One (Lake Houston Dental Care), 7651 FM 1960 East, Humble, TX 77346
8. Asst. Prof., MD Anderson, Gynecologic Oncology, 1515 Holcombe, Houston, TX 77030
9. Medical Technologist, Christus St John Hospital, Laboratory, Nassau Bay, TX
10. MD, Medical director, Company Care, Occupational Medicine, 4000 Spencer Hwy, Pasadena, TX 77504
11. Epidemiologist II, TX Dept of State Health Services, Disease Prevention & Interventions, 1100 W. 49th, Austin, TX 78756
12. Asst. Prof., UTHSCH-Division of Endocrinology, MSB, Suite 6.100, Houston, TX, 77030
13. Diagnostic Medical Health , Physicist/St John’s Health System/Nuclear Medicine, 1235 E. Cherokee, Springfield, MO 65804
14. Quality Improvement Analyst, transpacific Renal Network, Quality Improvement, 4470 Redwood, Hwy, St. 102, San Rafael, CA 94903
15. Health Educ. Program Manager, Spectrum Healthcare Resources, HAWC, Cannon AFB, NM 88103.
16. Pediatric Dietitian, Texas Children’s Hospital, Food & Nutrition, 6621 Fannin, Houston, TX 77030.
17. Assistant Professor, University of Utah Health Sciences Center, Pediatrics, 295 Chipeta Way, Salt Lake City, Utah 84108
18. Research Statistician, U.S. Oncology, Biostatistics & Medical Writing, 12941 North Freeway, Suite 700, Houston, TX 77060.

-
19. Assistant Professor, Parker College of Chiropractic, Microbiology & Public Health, 2500 Walnut Hill Lane, Dallas, TX 75229
 20. Regulatory Affairs Manager, Mary Crowley Medical Research Ctr., Regulatory Affairs, 1717 Main Street, 60th Floor, Dallas, TX 75201
 21. Evaluation Manager, American Cancer Society, Health Promotions, 1825-B Kramer Ln, Suite 200, Austin, TX 78758.
 22. Industrial Hygienist, BP America, HSSE, 200 Westlake Park, Houston, TX 77079
 23. GRA, MDACC, SPH, Epidemiology, 1200 Pressler, Houston, TX 77030
 24. Nurse Practitioner, Pearland Family Medicine, 3223 E. Broadway, Pearland, TX 77581.
 25. Colonel, U.S.Army, Nursing, 6900 Georgia Ave., NW, Washington, DC, 20307
 26. Assistant Professor, Cleveland State Clinic, Health Care Admin. & Public Health, 2121 Euclid Ave., Bldg. 438, Cleveland, OH 44115
 27. Chief of Aerospace Medicine, McGuire AFB (USAF), Flight Med. Clinic, McGuire AFB, NJ 08641
 28. Manager, Research & Evaluation, Blue Cross Blue Shield of RI, Health & Wellness, 15 LaSalle Sq., Providence, RI 02903
 29. Medical Epidemiologist, Centers for Disease Control & Prevention, National Center for Infectious Diseases, 1600 Clifton Rd, NE, MS-C09, Atlanta, GA 30333.
 30. Question #7 Evaluation 'specialist II, Public Health Institute, 555 12th St., Oakland, CA 94607.
 31. Asst. Dean, UTHS School of Public Health, 33500 Camp Bowie Blvd., Ft Worth, TX 76107.
 32. Center Medical Dir., Concentra Health Systems, 125 E. 8th St., Deer Park, TX 75236.
 33. Research Associate III, UTMB, Prev. Red & Comm Health, 301 Univ., Blvd., Galveston, TX 77555-1153.
 34. Asst. Prof., Moffitt Cancer Center, Cancer Prev. & Control, 12902 Magnolia, Tampa, FL 33612
 35. Research Assoc., Oregon Health & Science Univ., School of Nursing, 3181 So San Jackson Park Rd, Portland, OR 97239.
 36. Dir. of Prevention, Houston Area Community Services, Inc., Prevention Services, 3730 Kirby Dr., Suite 820, Houston, TX 77098
 37. Zoonosis Control Veterinarian, TX Dept of State Health Services, Zoonosis Control, 2408 S. 37th St., Temple, TX 76504
 38. Chief Employee Medicine, Fayetteville, NC, Veteran Medical Center, Ramsey St, Fayetteville, NC 28312.
 39. Epidemiologist, Texas Dept. of State Health Services, Disease Prevention of Intervention, 1100 W. 49th St., Austin, TX 78756.
 40. Commander (Col), 16th Medical Group, 113 Lielmanas Ave., Hurlburt Field, FL, 35244.
 41. Sr. Executive Osteoporosis Specialist, Merck &Co., Inc., USHH/Sales Sunnyside Pike, West Point, PA 19486.
 42. Asst. Professor of Epidemiology, Yale U., Chronic Disease Epi, 60 College Str, New Haven, CT 06520.
 43. Prof. & Sr. assoc. Dean, Baylor College of Medicine, Pediatrics, Baylor Plaza, Houston, TX 77030

44. Asst. Prof., Baylor College of Dentistry, Public Health Sciences, 3302 Gaston Ave., Dallas, TX 75246.
45. HIV/STD Epi/Surveillance, DSHS, Epi/Surveillance, Austin, TX
46. Chief Dentist/Capt, Federal Bureau of Persons, Health Svs., 320 First St., NW, Washington, DC, 20534
47. Asst. Dir./Biostat., Forest Research Institute, Biostatistics Harborside Financial Ctr., Plaza V, Jersey City, NJ, 07311.
48. Section Manager, Southwest Research Institute, Dir 10, P.O. Drawer 28510, San Antonio, TX 78228-0510
49. Post Doc, UTSPH
50. Medical Dir., Dallas County, STD, 2377 N. Stemmons, Dallas, TX 75207.
51. Prof & Chair, Emerg. Med., UT southwestern Med. Ctr., Dallas, 7609 Southwestern, Blvd., Dallas, TX 75225-7927.
52. Asst. Prof., UAMS COPH, Epidemiology, 4301 West Markham, Little Rock, AR, 72205-7199.
53. Asst. Professor, UTSPH, B.S., 80 Fort Brown, Brownsville, TX 78520
54. Asst. Professor, UT Health Science Center S.A., Medicine/GCRC, 7703 Floyd Curl Dr., San Antonio, Texas 78229
55. Epidemiologist III, Texas Dept. State Health Services, Infectious Disease Center, 1100 W 49th St, Austin, TX 78756
56. Research Scientist, prefers to be unnamed, San Antoino, TX
57. Study Coordinator, Univerwsity of North Carolina, Epidemiology, CB#8050, Chapel Hill, NC 27514
58. Asst. Prof., UNT School of Public Health, Epidemiology, 3500 Camp Bowie Blvd., Fort Worth, TX 76107.
59. Asst. Prof. of Medicine, Baylor College of Medicine, Section of Infectious Disease, One Baylor Plaza, Houston, TX, 77030
60. Pre-doctoral fellow, UT-SPH CHPPR
61. Physician-Scientist, AM Cancer Society/Emory University, Atlanta, GA 30329
62. Executive Director M.D. Anderson Cancer Center, Public Education, 1515 Holcombe, Unit 229, Houston, TX 77030
63. Public Health Analyst, Dept. of Health & Human Services (HRSA), 2201 6th Ave, Suite 843, Seattle, WA 98121.
64. Lt Colonel, USAF School of Aerospace Medicine, Hyperbaric Medicine, 2601 Louis Bever Dr., Books City-Base, TX 78235.
65. Asst. Dir., Univ. of Texas at El Paso, CERM, 500 W. University, El Paso, TX 79968
66. MD, Pulmonary Medicine, Kelsey-Seybold Clinic, 6624 Fannin #1900, Houston, TX 77030
67. Research Coordinator, Baylor College of Medicine, Retrovirology, 4139 Bellaire Blvd., #322, Houston, TX 77025
68. Manager Epidemiology, Cordis Corporation, Product Quality Services, 14201 NW 60th Ave., Miami Lakes, FL 33014
69. UN-Madison Population Health Fellow, Milwaukee Health Department, 841 N. Broadway, 3rd Floor, Milwaukee, WI 53202.
70. Owner, Veterinary Hospital of Alvin, 1401 FM 1462, Alvin, TX 17511
71. Pedi Resident, UT-Houston, Pediatric, Fannin, Houston,Tx

-
72. Assoc. Prof., Univ. of Memphis, Psychology, 202 Psychology Dept. #310, Memphis, TN 38152
 73. Public Health Consultant, Self-employed, 1315 Allison St. NW, Washington, DC 20011
 74. Asst. Prof., UT-HSC, Houston, Pediatrics/Adol. Medicine, 6431 Fannin, MSB 3.140, Houston, TX 77030
 75. President, First Candle/Alliance, 1314 Bedford Ave., Ste 210, Baltimore, Maryland 21208
 76. Core Laboratory Manager, Walter Reed Army Medical Center, Pathology, 6900 Georgia Ave, NW, Washington, DC 20307
 77. Clinical Marketing Manager Biotech Firm
 78. Attorney, Gardere Wynne Sewell LLP, Health Law Section, 1601 Elm St., Suite 3000, Dallas, TX 75201
 79. Pediatric Oncologist, US Navy
 80. Registered Nurse, St Joseph Hospital, Houston, TX
 81. Partner, Rodriguez & Vega, PLLC, 2901 Telephone Rd., Houston, TX 77023
 82. House Officer, University of Michigan, OB/GYN Resident, 1500 E. Medical Center Drive, Ann Harbor, MI 48109
 83. Coordinator-Health Education and Malaria, Exxon Mobil, Medicine and Occupational, 800 Bell St., Rm 3180, Corp-EMB-3180, Houston, TX 77002
 84. Research Health Science Specialist ME OVAMC, Research, 2002 Holcombe Blvd, Houston, TX 77030
 85. Data Analyst, Injury Prevention Center of Greater Dallas, 5808 Harry Hines Blvd., Dallas, TX 75235
 86. Resident Physician, Internal Medicine, Spokane, WA 99203
 87. Instructor
 88. Assoc. Prof., MD Anderson, Head & Neck Surgery, 1515 Holcombe, Houston, TX 77030
 89. Health Program Manager, City of San Antonio, San Antonio Metro Health, 332 West Commerce, San Antonio, TX 78205
 90. ESL Teacher
 91. Hospital Administration, USAF
 92. Col, Chief , USAF, Human System Group, Brooks City-Base, TX 78238
 93. Asst. Professor of Pediatrics, Univ. of TX Southwestern, Pediatrics, 1935 Motor St., Dallas, TX 75235
 94. Chief Operating Officer, Obstetrical & Gynecological Assoc., 7900 Fannin #3030, Houston, TX 77054
 95. Global Prospect Stewardship Mgr., Shell, Lubricants, 700 Milan Street, Houston, TX 77252
 96. Graduate Research Asst., UT M.D. Anderson Cancer, Epidemiology 1515 Holcombe Blvd., Houston, TX 77030
 97. Medical Officer, Formal Physical Evalundor Board, USAF, Disability, Randolph, AFB, TX
 98. Informatics Analyst UT MD Anderson Cancer Ctr., Medical Informatics 1100 Holcombe Blvd #214, Houston, TX 77030

99. Professor/Dept. Head, LSU Health Science Center, Clinical Lab Science, 1900 Gravier St., New Orleans, LA 70112
100. Predoctoral Fellow, UTHSC & Houston Dept, Health & Human Services, Houston, TX 77030
101. Research Assistant, Baylor College of Medicine, Breast Cancer Center, One Baylor Plaza, Houston, TX 77030
102. Assistant Attending in Pediatrics, Coney Island Hospital, Pediatrics, 2601 Ocean Pkwy, Rm 901, Brooklyn, NY 11285.
103. Program Specialist V, Dept State Health Svcs., Chronic Disease Prev., 1100 W. 49th St., Austin, TX
104. Instructor Research Supervisor, Baylor College of Medicine, Texas Children's Hospital, Pediatrics, Allergy/Immunology, 6621 Fannin, UTexas-Houston, Houston, TX 77030
105. Nutrition Services Coordinator, UHS, FFACTS Clinic, 527 N. Leona, San Antonio, TX 78207
106. Epidemiologist, Lexington-Fayette Co., Health Dept, 333 Waller Ave., Lexington, KY 40504
107. Senior Analyst, Reliant Energy, Marketing, 1000 Main, Houston, TX 77002
108. Chief Resident, UC Davis Medical Ctr., Internal Medicine, Sacramento, CA
109. Residency Spec. DSHS, Admin. 5425 Polk St., Houston, TX 77023.
110. Assistant Professor, University of South Florida, Epidemiology Tampa, FL 33612
111. Industrial Hygiest, Grounwater Services, 2211 Norfolk, Houston,
112. TX 77098
113. Physician Assistant, Health First Green Oaks, Family Practice, 6825 Green Oaks, Fort Worth, TX 76136
114. Director Biostatistics, Cyberonics, Clinical Affairs, 100 Cyberounic, Blvd., Houston, TX 77508
115. Consultant, World Health Organization, Regional Office of the Immunization Unit, 525 23rd St., Washington, DC

Question 44 “What would have helped you complete your degree sooner?”

1. Not do dual degree program or work full time.
2. Written degree plan
3. Fewer professional demands
4. Difficulty in identifying a thesis topic and completing it while working full time.
5. With full time job, would like to have evening classes.
6. More practice help with data collection and more thesis preparation. Never had experience at it.
7. Finding an adequate thesis topic.
8. More advice on thesis from advisor
9. My own outside commitments
10. more guidance during thesis process
11. Evening classes
12. I worked full time during the process. The deadlines for thesis were difficult to meet in the desired semester. Also, courses were taught during the day-sometimes twice a week. No way to take more than 1 course a semester & work.
13. I was able to complete my degree in a timely manner & however I felt that b/c I started in the spring semester, I had to double up on classes in order not to get behind.
14. If I had a better 1st committee I would not have to drop my original project (after writing a proposal) and start a new comitee with a new project. I must say that my last committee was very helpful.
15. Faculty who was interested in my success. I was shocked by the interaction between staff and students. This school is designed for professionals (MD, RV) not new PH professionals.
16. While I took lower than I anticipated, I consider the time well spent. I enjoyed it and would not do it differently.
17. Guidance in selections of thesis subject, focus on completing research & integration of material.
18. Getting Rid of XXXX worst person ever dealt with in my educational career & I have Zarasters and JD.
19. Workshop w/former students who completed dual thesis- their recommendations, what they learned from their experiences.
20. Thesis research encountered in fore seen delays and having to rely on self for surveillance sampling.
21. I had a ms statistics coming in so this helped me more along quicker.
22. Faculty, staff & other students were supportive in completing degree in timely manner.
23. Keep same committee members from doctoral candidacy prep. To dissertation. Have committee members that understand qualitative research. Have had a better course outline for completion.
24. I took all the course work in 2 semesters because I had a 1-year stipend & sabbatical from work. I took 18 & 23 hours due to requirements & interests. My course choices were limited by prerequisite/time constraints. It would have been good to cover basic/intro courses prior to the 1-year attendance by attending to totally offers & classes or on-1-yr.

25. We moved overseas with husband's job in the middle of my M.S.. Couldn't help it, but was glad to pick-up where left off after 2 years.
26. Informing me that I had to register for a course while completing my thesis I would graduate a semester before.
27. My biggest problem was starting my thesis. A class design on how to get started would help.
28. If I could have totally focused on my courses and dissertation without working (especially while working on my disser) and needing to support (contribute to my support). I'm sure I would have finished sooner.
29. More clarity & support surrounding application process/proposal for thesis & IRB process.
30. If the thesis deadline wasn't so ipid. I had to pay for a whole semester doing nothing after completion of thesis
31. Not applicable to UT.SPH, but it would have been having a more manageable work at my job as accepts a new position with global responsibilities just as began to get started in dissertation research.
32. More courses. Monitoring advisors. Had to change advisor/topic/dissertation and restart all over.

Question 45 “What skills acquired at UT-H SPH have been most useful in your career?”

1. Epi & research design knowledge that allows me to critique studies including their methods, study design.
2. The integrational Public Health knowledge & professional career.
3. Evaluation tools epidemiology
4. Industrial hygiene, epl, and biometry.
5. Statistics
6. Independent study and literature review on line computer skills and searches- these are more real life aspects.
7. Research
8. Stats, economic evaluations of healthcare systems and epidemiology.
9. Statistics, understanding Public Health.
10. The broad focus of the MPH program provided a valuable “big picture” perspective.
11. None-only that you cannot work with everyone & educators don’t always have your (the student’s) interest as heart.
12. Biostatistics, Data Base management, SAS, experienced design, evaluation researches.
13. Foundation skills is occupational health and having that as a resource even if I don’t know the answer, I know where to look.
14. Research environmental health awareness, statistics, epidemiology, charobiology finance in public health
15. Ability to think analytically and become a critical thinker. Strong foundation in epidemiology and statistics.
16. The ability to assess the validity of clinical study design & statistical analysis in medical literature.
17. Ability to critically review clinical studies and present information/relevance to hcp.
18. The practician along the Tex. Mex. Border; the social learning theory, environment overview.
19. Public speaking, thesis writing, use of spread sheets and stats programs.
20. Evidence based practice-centicol eval. of Literature. Epidemiological reviews- Prevention vs realice medicine.
21. Research/Literature reviews observing/understanding the research that was conducted by faculty and other doctoral students.
22. Community assessment. Start to end research project. PH functioning. Org.Psych. Program evaluation. Health Ed. & Promotion
23. The ability to think out of the box and look at PH issues as dynamic multifactorial forces.
24. As a physician, my degree has been very useful in reading & critiquing clinical research and interpreting statistics.
25. Analytical skills/Statistical interpolation.field work experience (because I worked at school, not because of courses.

Question 46 “What aspects of public health practice or research were not adequately addressed in your program at UT-H SPH?”

1. I had to search for genetics & population genetics classes...ended up doing many indep. studies.
2. Not enough exposure to “real world”. Practice at a health department.
3. thesis design, community involvement, did not have adequate guidance on career options.
4. Psychometric Class
5. Data collection/analysis/topics for thesis. Specific to actual practice.
6. Outreach implantation to the public
7. The San Antonio program did not offer enough Epidemiology & Biostatistics classes that would be accessible for persons currently employed full time & living out-of-city (Austin).
8. Collaboration between SPH & TMC. It was like pulling teeth to get SPH to work w/MDACC. Here @ UT-H we have millions of opportunities yet SPH refuses to utilize theses. It only hurts students.
9. I feel I got a really good education and that everyone was there for me if I wanted to. Logistic Regression could have been more geared toward behavioral science vs. biometry though.
10. Need more focus on environmental issues & health, very weighted on occupational health.
11. More @ the political climate surrounding public health policy
12. A stronger focus on MBA type skills or the opportunity to do joint MPH/MBA.
13. More experience with practice cases applying epidemiology methods & statistical analysis.
14. Assistance during thesis process-biostats classes were good but more experience applying concepts would have been helpful.
15. Statistics – I took the intro class, however the focus was on math, not when to choose a given analysis. This is my most significant criticism of the core course work
16. Aspects of program Eval. development & implementation program administration.
17. Biostatistics – too dry with poor practical collection. It did not help me at all.
18. There was not enough guidance from my advisors during the thesis stage. Had I not done a thesis in undergrad it would have taken me longer to complete my program. Advisors should have experience in public health projects in the community, not just research.
19. management of research studies: hiring staff, managing budgets (not developing one, but managing a budget). All the leadership/management things that PI’s need to do.
20. Practical problems encountered in designing studies and analyzing clinical trials data. In particular dealing with FDA Reviews and understanding FDA Reg’s.

Question 47 “What was the greatest strength of UT-H SPH during your degree program?”

1. Faculty
2. Many excellent faculties
3. flexibility
4. Good relationships w/faculty-small classes, one-on-one availability.
5. Literature review & group interactions.
6. Courses
7. Most professors were very knowledgeable in their area & very helpful.
8. Access to faculty and individualized teachings
9. Interesting courses, knowledge from faculty
10. The flexibility of having so many options, the integration with Texas medical center.
11. My internship/practicum(s) helped me to gain data analysis skills that allowed me to complete a thesis & also has been useful in current projects at work.
12. Faculty experience and willingness to help. I felt the faculty was very knowledgeable.
13. Diversity of required classes & guest speakers/lecturing in most classes. Most classes taught by more than one professor
14. Work experience. The 2 jobs I had gave me the opportunity to apply what I learned & gave me experience to get a job.
15. The student population was largely medical professionals and the collegial atmosphere among students & faculty promoted sharing of knowledge and experience was valuable.
16. The Prof! Good teachers that brought in consulting/research experience into the class room
17. Working with the professors and learning from other doctoral students with significant work experience.
18. The faculty/student interaction was a wonderful strength at the El Paso campus. The faculty was always available to help and assist the students in any way possible.
19. The faculty. I particularly would like to highlight those on my dissertation committee. Drs X, X and X. My advisor and dissertation advisor, Dr. X was invaluable during my asseseive exposure.
20. Epidemiology – the basics as taught by Dr. X’s expert advice. (not the Epi professor).
21. The noon seminars exposed me to a wide variety of topics. Also the interactions b/w students & faculty at informal & formal gatherings (luncheons, potlucks, etc.)

Question 48 “What was the greatest weakness of UT-H SPH during your degree program?”

1. Faculty changing minds re: my program
2. Thesis difficulty unless it was sponsored by an internship.
3. 1st Advisor not really comments on science best grammar for thesis work.
4. Data collection.
5. Implementation to the public
6. Flexibility of class schedules.
7. I think time criteria for admissions should be elevated. I felt many of my classmates were not the caliber of student for a top-rate school. My education suffered because 1) classes moved slower to cater to the students and 2) other students didn't challenge class professors which could elevate discussions/learning.
8. lack of communication with advise/mentor.
9. My original advisor and committee were of poor help to me. I have wasted my 1st few years with them.
10. Lack of support, collaboration, resources for students & alumni alike. I receive weekly e-mails from my undergrad program re: opportunities. UT-H – nothing!
11. The assignment of geneticists to the new Epi division, which drove away key Epi faculty. Bad move.
12. The basic epi class should have been more difficult. It was too big to get in depth enough.
13. lack of students in my program and @ times I had to take an individual study vs. the actual course.
14. Academic Services-X
15. Biostatistics class seemed disorganized. Took statistics at school of nursing, graduate programs was more valuable to me. The rest I taught myself.
16. Would like to have had more opportunity for advanced psychometric/measurement coursework.
17. As the El Paso Program expanded less opportunity for night time class.
18. course expectation. Should know/skills they should posses.
19. I felt a little overwhelmed by the possibilities and could have benefited from more guidance.
20. Did not feel Dallas program was cohesive as a “program”. Very easy to lose focus if you are not careful and extremely self-motivated.
21. Many classes are too lenient, convey little helpful information, are geared at lowest common denominator.
22. Lack of mastery of English-speaking or writing skills among foreign-born students-hand of that remains in workplace needs to be set higher; resources provided to bridge gap.
23. For me, I had to commute from Lake Jackson. But that is not a weakness of the school & for biometry classes I would never take an online course.
24. Lack of well-taught courses. Too many courses focused on outside speakers talking about their research instead of “teaching” the course. E.G. Molecular Epi.
25. Full time working students were at a disadvantage e.g., parking, access to professors and research opportunities

26. The biggest weakness at the Dallas campus was the lack of teachers and classes available in 1998.
27. I do not recall any weaknesses during my education at UTH-SPH. I had an enjoyable and wonderful learning experience while pursuing my MPH.
28. Thesis format review took too long, was irrationally organized, and the standards were constantly changing. Also why aren't our id cards really digital?, The sticker system is archaic & we are forced to pick them up each semester.
29. Lack of accommodations for students attending UT-SPH while working. Limited evening courses were offered. Thankfully I had a very understanding employer who allowed me to adjust my schedule to attend a number of classes offered during the day. Online courses would be a help in addressing this weakness
30. Biostats and an Epidemiology professor that could not seem to teach effectively.
31. Lack of academic rigor- this was graduate school and students should be expected to be able to write clearly and do basic math & use their own calculators) before starting. Furthermore, students who can't do these things, shouldn't be coddled.
32. Some of the requirements for the degree in other disciplines classes were not that interesting or taught in a manner that interested me.
33. Additional Comment Sometimes hard to answer your questions because I am not in a strictly public health job. Because I am in adolescent medicine specialist, I do believe that I practice a lot of public health through activities like updating immunization, providing preventive care, testing for STD's on a regular basis, testing for HIV on a regular basis, giving workshops and lectures locally and nationally on STD's and birth control. In addition, I would like to say that I completely and thoroughly enjoyed my experience at SPH. I loved it and would do it all over again. I am somewhat saddened by the fact that my current employer has chosen not to take advantage of all the skills I learned at SPH. However, in the near future, I will be changing jobs and hope to find something that will allow me to use & develop my skills.
34. Guidance and help in writing this dissertation. I lived out of state and was working full time.
35. Weak International Health Program very weak career services help for those wanting to work in international health or outside of Texas. I am getting a PhD in Epidemiology from Hopkins this year. Their career services is much stronger. You do get great skills but that does not matter when you look for a job outside of Texas.
36. Weak or lack of faculty in certain areas: sociology theory, applied policy statistics, law.
37. The school's policies and administration all assume that students are recently graduated from college and interested in "traditional" public health. There's no official recognition that MA's or other advanced dimicians have full-time jobs and can't devote a summer or semester to an internship project that is not part of their regular duties.

Additional Comments

1. No, never and I have voiced my opinion every chance I get. Huge mistake!!! For an accredited School, UT-H functions like a school from decades past. It focuses on those all ready in the profession & does not foster growth within those with little public health background. I was under the impression that UT was one of the best schools so I traveled from another state to attend. Only after being here did I realize how wrong I was. Staff acted like it was inconvenience for them to meet w/students. Maybe I was wrong on them and I thought process, but I thought staff was there for the students.
2. Although I applied for many positions after graduation UT-SPH, I was not successful in gaining employment in which I could do research or use my MPH degree, I went back to school & became a Registered Nurse, because the money is good, and I have job security. I did not give the survey to my employer because I am not in Public Health.
3. In the institution on campus, such as San Antonio, there are few professors & few classes. PhD don't want to teach at one class. There should be requirements as to # of classes PhD are required to teach it full time-part time. I saw on more than one occasion two PhD's give the dean bad problems. Off campus students play sports with campus fees for Houston. If these fees were eliminated many students with grudges would take additional classes.

Crosstabulations

Responses by Year of Graduation

Q1 Gender * Year Crosstabulation

| | | | Year | | | Total |
|-----------|--------|---------------|--------|--------|--------|--------|
| | | | 1995 | 2000 | 2004 | |
| Q1 Gender | Male | Count | 17 | 15 | 18 | 50 |
| | | % within Year | 51.5% | 40.5% | 31.0% | 39.1% |
| | Female | Count | 16 | 22 | 40 | 78 |
| | | % within Year | 48.5% | 59.5% | 69.0% | 60.9% |
| Total | | Count | 33 | 37 | 58 | 128 |
| | | % within Year | 100.0% | 100.0% | 100.0% | 100.0% |

Q2 UT-SPH Degree * Year Crosstabulation

| | | | Year | | | Total |
|------------------|------|---------------|--------|--------|--------|--------|
| | | | 1995 | 2000 | 2004 | |
| Q2 UT-SPH Degree | MPH | Count | 28 | 27 | 47 | 102 |
| | | % within Year | 84.8% | 69.2% | 74.6% | 75.6% |
| | MS | Count | 0 | 6 | 5 | 11 |
| | | % within Year | .0% | 15.4% | 7.9% | 8.1% |
| | DrPH | Count | 3 | 3 | 3 | 9 |
| | | % within Year | 9.1% | 7.7% | 4.8% | 6.7% |
| | PhD | Count | 2 | 3 | 8 | 13 |
| | | % within Year | 6.1% | 7.7% | 12.7% | 9.6% |
| Total | | Count | 33 | 39 | 63 | 135 |
| | | % within Year | 100.0% | 100.0% | 100.0% | 100.0% |

Q2Multiple UT-SPH Degree (additional) * Year Crosstabulation

| | | | | Year | | | Total |
|---------------------------------------|------|---------------|--------|--------|--------|--------|-------|
| | | | | 1995 | 2000 | 2004 | |
| Q2Multiple UT-SPH Degree (additional) | DrPH | Count | 2 | 0 | 2 | 4 | |
| | | % within Year | 100.0% | .0% | 100.0% | 57.1% | |
| | PhD | Count | 0 | 3 | 0 | 3 | |
| | | % within Year | .0% | 100.0% | .0% | 42.9% | |
| Total | | Count | 2 | 3 | 2 | 7 | |
| | | % within Year | 100.0% | 100.0% | 100.0% | 100.0% | |

Q3module Module of your primary work at UT-SPH * Year Crosstabulation

| | | | Year | | | Total |
|---|--|---------------|--------|--------|--------|--------|
| | | | 1995 | 2000 | 2004 | |
| Q3module Module of your primary work at UT-SPH | Community Health | Count | 7 | 5 | 15 | 27 |
| | | % within Year | 24.1% | 20.0% | 31.9% | 26.7% |
| | Disease Control | Count | 7 | 1 | 8 | 16 |
| | | % within Year | 24.1% | 4.0% | 17.0% | 15.8% |
| | Health Promotion/Health Education | Count | 4 | 6 | 6 | 16 |
| | | % within Year | 13.8% | 24.0% | 12.8% | 15.8% |
| | Health Services Organization | Count | 6 | 4 | 9 | 19 |
| | | % within Year | 20.7% | 16.0% | 19.1% | 18.8% |
| | International and Family Health | Count | 1 | 4 | 7 | 12 |
| | | % within Year | 3.4% | 16.0% | 14.9% | 11.9% |
| | Occupational Health or Aerospace Medicine | Count | 4 | 5 | 2 | 11 |
| | | % within Year | 13.8% | 20.0% | 4.3% | 10.9% |
| | Total | Count | 29 | 25 | 47 | 101 |
| | | % within Year | 100.0% | 100.0% | 100.0% | 100.0% |

Q3disc Discipline of your primary work at UT-SPH * Year Crosstabulation

| | | | Year | | | Total |
|--|---------------------------------|---------------|--------|--------|--------|--------|
| | | | 1995 | 2000 | 2004 | |
| Q3disc Discipline of your primary work at UT-SPH | Behavioral Sciences | Count | 4 | 4 | 4 | 12 |
| | | % within Year | 40.0% | 23.5% | 16.0% | 23.1% |
| | Biological Sciences | Count | 0 | 1 | 1 | 2 |
| | | % within Year | .0% | 5.9% | 4.0% | 3.8% |
| | Biometry | Count | 1 | 3 | 5 | 9 |
| | | % within Year | 10.0% | 17.6% | 20.0% | 17.3% |
| | Environmental Sciences | Count | 0 | 1 | 3 | 4 |
| | | % within Year | .0% | 5.9% | 12.0% | 7.7% |
| | Epidemiology | Count | 3 | 6 | 8 | 17 |
| | | % within Year | 30.0% | 35.3% | 32.0% | 32.7% |
| | Management & Policy Sciences | Count | 2 | 2 | 4 | 8 |
| | | % within Year | 20.0% | 11.8% | 16.0% | 15.4% |
| | Total | Count | 10 | 17 | 25 | 52 |
| | | % within Year | 100.0% | 100.0% | 100.0% | 100.0% |

Q3region Regional / Satellite Campus of your primary work at UT-SPH * Year Crosstabulation

| | | | Year | | | Total |
|---|--------------------|---------------|--------|--------|--------|-------|
| | | | 1995 | 2000 | 2004 | |
| Q3region Regional / Satellite Campus of your primary work at UT-SPH | Dallas Campus | Count | 0 | 0 | 3 | 3 |
| | | % within Year | .0% | .0% | 37.5% | 14.3% |
| | El Paso Campus | Count | 1 | 4 | 2 | 7 |
| | | % within Year | 14.3% | 66.7% | 25.0% | 33.3% |
| | San Antonio Campus | Count | 6 | 2 | 3 | 11 |
| | | % within Year | 85.7% | 33.3% | 37.5% | 52.4% |
| Total | Count | 7 | 6 | 8 | 21 | |
| | % within Year | 100.0% | 100.0% | 100.0% | 100.0% | |

Q4 Have you pursued further health education since graduating from UT-SPH? * Year Crosstabulation

| | | | Year | | | Total |
|---|---------------------|---------------|--------|--------|--------|-------|
| | | | 1995 | 2000 | 2004 | |
| Q4 Have you pursued further health education since graduating from UT-SPH? | No | Count | 22 | 28 | 43 | 93 |
| | | % within Year | 66.7% | 71.8% | 69.4% | 69.4% |
| | Yes (degree sought) | Count | 6 | 6 | 15 | 27 |
| | | % within Year | 18.2% | 15.4% | 24.2% | 20.1% |
| | Yes (non-degree) | Count | 5 | 5 | 4 | 14 |
| | | % within Year | 15.2% | 12.8% | 6.5% | 10.4% |
| Total | Count | 33 | 39 | 62 | 134 | |
| | % within Year | 100.0% | 100.0% | 100.0% | 100.0% | |

Q5 Which of these did you find helpful in finding a job after leaving UT-SPH? * Year Crosstabulation

| | | | Year | | | Total |
|--|--|---------------|--------|--------|--------|-------|
| | | | 1995 | 2000 | 2004 | |
| Q5 Which of these did you find helpful in finding a job after leaving UT-SPH? | Other UT-SPH resources (faculty, students, job postings, etc.) | Count | 5 | 4 | 9 | 18 |
| | | % within Year | 21.7% | 18.2% | 23.1% | 21.4% |
| | Alumni | Count | 1 | 0 | 2 | 3 |
| | | % within Year | 4.3% | .0% | 5.1% | 3.6% |
| | Other | Count | 17 | 18 | 28 | 63 |
| | | % within Year | 73.9% | 81.8% | 71.8% | 75.0% |
| Total | Count | 23 | 22 | 39 | 84 | |
| | % within Year | 100.0% | 100.0% | 100.0% | 100.0% | |

Q6 What is your current employment status? * Year Crosstabulation

| | | | Year | | | Total |
|--|------------------------|---------------|--------|--------|--------|-------|
| | | | 1995 | 2000 | 2004 | |
| Q6 What is your current employment status? | Employed full-time | Count | 28 | 31 | 43 | 102 |
| | | % within Year | 84.8% | 81.6% | 72.9% | 78.5% |
| | Employed part-time | Count | 2 | 4 | 6 | 12 |
| | | % within Year | 6.1% | 10.5% | 10.2% | 9.2% |
| | Unemployed by choice | Count | 3 | 2 | 3 | 8 |
| | | % within Year | 9.1% | 5.3% | 5.1% | 6.2% |
| | Unemployed but looking | Count | 0 | 0 | 3 | 3 |
| | | % within Year | .0% | .0% | 5.1% | 2.3% |
| | Student | Count | 0 | 1 | 4 | 5 |
| | | % within Year | .0% | 2.6% | 6.8% | 3.8% |
| Total | Count | 33 | 38 | 59 | 130 | |
| | % within Year | 100.0% | 100.0% | 100.0% | 100.0% | |

Q8 Of the following types of organizations, which one best describes your current employment? * Year Crosstabulation

| | | | Year | | | Total |
|---|--|---------------|--------|--------|--------|-------|
| | | | 1995 | 2000 | 2004 | |
| Q8 Of the following types of organizations, which one best describes your current employment? | Government | Count | 8 | 11 | 8 | 27 |
| | | % within Year | 27.6% | 31.4% | 16.7% | 24.1% |
| | Educational Institution | Count | 14 | 11 | 17 | 42 |
| | | % within Year | 48.3% | 31.4% | 35.4% | 37.5% |
| | Private Industry | Count | 3 | 4 | 5 | 12 |
| | | % within Year | 10.3% | 11.4% | 10.4% | 10.7% |
| | Hospital or other health care provider | Count | 4 | 8 | 17 | 29 |
| | | % within Year | 13.8% | 22.9% | 35.4% | 25.9% |
| | Other | Count | 0 | 1 | 1 | 2 |
| | | % within Year | .0% | 2.9% | 2.1% | 1.8% |
| Total | Count | 29 | 35 | 48 | 112 | |
| | % within Year | 100.0% | 100.0% | 100.0% | 100.0% | |

Q9 Which of the following best describes your present occupation? * Year Crosstabulation

| | | | Year | | | Total |
|---|--|---------------|--------|--------|--------|-------|
| | | | 1995 | 2000 | 2004 | |
| Q9 Which of the following best describes your present occupation? | Behavioral or social scientist | Count | 4 | 2 | 3 | 9 |
| | | % within Year | 13.8% | 5.9% | 6.4% | 8.2% |
| | Biostatistician | Count | 1 | 1 | 3 | 5 |
| | | % within Year | 3.4% | 2.9% | 6.4% | 4.5% |
| | Epidemiologist | Count | 3 | 5 | 10 | 18 |
| | | % within Year | 10.3% | 14.7% | 21.3% | 16.4% |
| | Health Educator | Count | 1 | 3 | 5 | 9 |
| | | % within Year | 3.4% | 8.8% | 10.6% | 8.2% |
| | Public community health physician, dentist | Count | 3 | 2 | 1 | 6 |
| | | % within Year | 10.3% | 5.9% | 2.1% | 5.5% |
| | Health planner or policy analyst | Count | 1 | 2 | 1 | 4 |
| | | % within Year | 3.4% | 5.9% | 2.1% | 3.6% |
| | Health services administrator | Count | 5 | 2 | 1 | 8 |
| | | % within Year | 17.2% | 5.9% | 2.1% | 7.3% |
| | Environmental health specialist | Count | 0 | 2 | 0 | 2 |
| | | % within Year | .0% | 5.9% | .0% | 1.8% |
| | Industrial hygienist or safety specialist | Count | 0 | 1 | 3 | 4 |
| | | % within Year | .0% | 2.9% | 6.4% | 3.6% |
| Laboratory scientist | Count | 1 | 1 | 2 | 4 | |
| | % within Year | 3.4% | 2.9% | 4.3% | 3.6% | |
| Other public health occupation | Count | 2 | 7 | 9 | 18 | |
| | % within Year | 6.9% | 20.6% | 19.1% | 16.4% | |
| Not in public health | Count | 8 | 6 | 9 | 23 | |
| | % within Year | 27.6% | 17.6% | 19.1% | 20.9% | |
| Total | Count | 29 | 34 | 47 | 110 | |
| | % within Year | 100.0% | 100.0% | 100.0% | 100.0% | |

Q10 What responsibilities related to public health do you have in your present job? * Year Crosstabulation

| | | | Year | | | Total |
|---|---|------------------------|--------------|--------------|--------------|---------------|
| | | | 1995 | 2000 | 2004 | |
| Q10 What responsibilities related to public health do you have in your present job? | Monitoring community health status | Count % within Year | 7 23.3% | 9 24.3% | 10 20.4% | 26 22.4% |
| | Investigating community health problems and hazards | Count % within Year | 3 10.0% | 6 16.2% | 4 8.2% | 13 11.2% |
| | Educating the public about health issues | Count % within Year | 9 30.0% | 6 16.2% | 7 14.3% | 22 19.0% |
| | Organizing community groups | Count % within Year | 0 .0% | 0 .0% | 1 2.0% | 1 .9% |
| | Developing community health policies and | Count % within Year | 0 .0% | 1 2.7% | 0 .0% | 1 .9% |
| | Enforcing health and safety laws | Count % within Year | 0 .0% | 1 2.7% | 3 6.1% | 4 3.4% |
| | Providing personal health services | Count % within Year | 2 6.7% | 2 5.4% | 6 12.2% | 10 8.6% |
| | Educating health personnel | Count % within Year | 1 3.3% | 2 5.4% | 1 2.0% | 4 3.4% |
| | Evaluating health services | Count % within Year | 1 3.3% | 3 8.1% | 2 4.1% | 6 5.2% |
| | Conducting research | Count % within Year | 3 10.0% | 3 8.1% | 11 22.4% | 17 14.7% |
| | Other | Count % within Year | 1 3.3% | 0 .0% | 1 2.0% | 2 1.7% |
| | None related to public health | Count % within Year | 3 10.0% | 4 10.8% | 3 6.1% | 10 8.6% |
| | Total | Count % within Year | 30 100.0% | 37 100.0% | 49 100.0% | 116 100.0% |

Q11 What is your current annual salary range? * Year Crosstabulation

| | | | Year | | | Total |
|---|-----------------------|---------------|--------|--------|--------|-------|
| | | | 1995 | 2000 | 2004 | |
| Q11 What is your current annual salary range? | Under \$30,000 | Count | 0 | 1 | 4 | 5 |
| | | % within Year | .0% | 2.9% | 8.9% | 4.6% |
| | \$30,000 - \$39,999 | Count | 1 | 3 | 5 | 9 |
| | | % within Year | 3.3% | 8.8% | 11.1% | 8.3% |
| | \$40,000 - \$49,999 | Count | 2 | 3 | 11 | 16 |
| | | % within Year | 6.7% | 8.8% | 24.4% | 14.7% |
| | \$50,000 - \$59,999 | Count | 1 | 2 | 7 | 10 |
| | | % within Year | 3.3% | 5.9% | 15.6% | 9.2% |
| | \$60,000 - \$69,999 | Count | 0 | 5 | 3 | 8 |
| | | % within Year | .0% | 14.7% | 6.7% | 7.3% |
| | \$70,000 - \$79,999 | Count | 4 | 3 | 2 | 9 |
| | | % within Year | 13.3% | 8.8% | 4.4% | 8.3% |
| | \$80,000 - \$89,999 | Count | 5 | 3 | 1 | 9 |
| | | % within Year | 16.7% | 8.8% | 2.2% | 8.3% |
| | \$90,000 - \$99,999 | Count | 3 | 2 | 0 | 5 |
| | | % within Year | 10.0% | 5.9% | .0% | 4.6% |
| | \$100,000 - \$109,999 | Count | 2 | 2 | 4 | 8 |
| | | % within Year | 6.7% | 5.9% | 8.9% | 7.3% |
| \$110,000 - \$119,999 | Count | 2 | 0 | 2 | 4 | |
| | % within Year | 6.7% | .0% | 4.4% | 3.7% | |
| > \$120,000 | Count | 10 | 10 | 6 | 26 | |
| | % within Year | 33.3% | 29.4% | 13.3% | 23.9% | |
| Total | Count | 30 | 34 | 45 | 109 | |
| | % within Year | 100.0% | 100.0% | 100.0% | 100.0% | |

Q12 The academic standards of the School of Public Health were about right in terms of rigor. * Year Crosstabulation

| | | | Year | | | Total |
|---|-------------------|---------------|--------|--------|--------|--------|
| | | | 1995 | 2000 | 2004 | |
| Q12 The academic standards of the School of Public Health were about right in terms of rigor. | Strongly Agree | Count | 9 | 16 | 10 | 35 |
| | | % within Year | 30.0% | 41.0% | 17.5% | 27.8% |
| | 2 | Count | 17 | 15 | 30 | 62 |
| | | % within Year | 56.7% | 38.5% | 52.6% | 49.2% |
| | 3 | Count | 3 | 4 | 8 | 15 |
| | | % within Year | 10.0% | 10.3% | 14.0% | 11.9% |
| | 4 | Count | 0 | 3 | 7 | 10 |
| | | % within Year | .0% | 7.7% | 12.3% | 7.9% |
| | Strongly Disagree | Count | 1 | 1 | 2 | 4 |
| | | % within Year | 3.3% | 2.6% | 3.5% | 3.2% |
| | Total | Count | 30 | 39 | 57 | 126 |
| | | % within Year | 100.0% | 100.0% | 100.0% | 100.0% |

Q13 The school provided courses enabling me to meet my degree program objectives. * Year Crosstabulation

| | | | Year | | | Total |
|---|-------------------|---------------|--------|--------|--------|--------|
| | | | 1995 | 2000 | 2004 | |
| Q13 The school provided courses enabling me to meet my degree program objectives. | Strongly Agree | Count | 15 | 16 | 23 | 54 |
| | | % within Year | 45.5% | 41.0% | 37.1% | 40.3% |
| | 2 | Count | 14 | 17 | 22 | 53 |
| | | % within Year | 42.4% | 43.6% | 35.5% | 39.6% |
| | 3 | Count | 3 | 5 | 12 | 20 |
| | | % within Year | 9.1% | 12.8% | 19.4% | 14.9% |
| | 4 | Count | 0 | 1 | 3 | 4 |
| | | % within Year | .0% | 2.6% | 4.8% | 3.0% |
| | Strongly Disagree | Count | 1 | 0 | 2 | 3 |
| | | % within Year | 3.0% | .0% | 3.2% | 2.2% |
| Total | | Count | 33 | 39 | 62 | 134 |
| | | % within Year | 100.0% | 100.0% | 100.0% | 100.0% |

Q14 Courses were available so that I could finish my program in a timely manner. * Year Crosstabulation

| | | | Year | | | Total |
|--|-------------------|---------------|--------|--------|--------|--------|
| | | | 1995 | 2000 | 2004 | |
| Q14 Courses were available so that I could finish my program in a timely manner. | Strongly Agree | Count | 16 | 21 | 20 | 57 |
| | | % within Year | 48.5% | 53.8% | 32.3% | 42.5% |
| | 2 | Count | 14 | 14 | 26 | 54 |
| | | % within Year | 42.4% | 35.9% | 41.9% | 40.3% |
| | 3 | Count | 1 | 3 | 9 | 13 |
| | | % within Year | 3.0% | 7.7% | 14.5% | 9.7% |
| | 4 | Count | 1 | 1 | 5 | 7 |
| | | % within Year | 3.0% | 2.6% | 8.1% | 5.2% |
| | Strongly Disagree | Count | 1 | 0 | 2 | 3 |
| | | % within Year | 3.0% | .0% | 3.2% | 2.2% |
| Total | | Count | 33 | 39 | 62 | 134 |
| | | % within Year | 100.0% | 100.0% | 100.0% | 100.0% |

Q15 I was satisfied with the number of courses available in my program area. * Year Crosstabulation

| | | | Year | | | Total |
|--|-------------------|---------------|--------|--------|--------|-------|
| | | | 1995 | 2000 | 2004 | |
| Q15 I was satisfied with the number of courses available in my program area. | Strongly Agree | Count | 11 | 14 | 15 | 40 |
| | | % within Year | 33.3% | 35.9% | 24.6% | 30.1% |
| | 2 | Count | 15 | 14 | 25 | 54 |
| | | % within Year | 45.5% | 35.9% | 41.0% | 40.6% |
| | 3 | Count | 3 | 8 | 11 | 22 |
| | | % within Year | 9.1% | 20.5% | 18.0% | 16.5% |
| | 4 | Count | 2 | 3 | 9 | 14 |
| | | % within Year | 6.1% | 7.7% | 14.8% | 10.5% |
| | Strongly Disagree | Count | 2 | 0 | 1 | 3 |
| | | % within Year | 6.1% | .0% | 1.6% | 2.3% |
| Total | Count | 33 | 39 | 61 | 133 | |
| | % within Year | 100.0% | 100.0% | 100.0% | 100.0% | |

Q16 I would have liked the opportunity to take evening classes. * Year Crosstabulation

| | | | Year | | | Total |
|---|-------------------|---------------|--------|--------|--------|-------|
| | | | 1995 | 2000 | 2004 | |
| Q16 I would have liked the opportunity to take evening classes. | Strongly Agree | Count | 9 | 9 | 16 | 34 |
| | | % within Year | 27.3% | 24.3% | 27.6% | 26.6% |
| | 2 | Count | 6 | 7 | 10 | 23 |
| | | % within Year | 18.2% | 18.9% | 17.2% | 18.0% |
| | 3 | Count | 9 | 13 | 17 | 39 |
| | | % within Year | 27.3% | 35.1% | 29.3% | 30.5% |
| | 4 | Count | 5 | 4 | 10 | 19 |
| | | % within Year | 15.2% | 10.8% | 17.2% | 14.8% |
| | Strongly Disagree | Count | 4 | 4 | 5 | 13 |
| | | % within Year | 12.1% | 10.8% | 8.6% | 10.2% |
| Total | Count | 33 | 37 | 58 | 128 | |
| | % within Year | 100.0% | 100.0% | 100.0% | 100.0% | |

Q17 The educational experience I had at the School of Public Health met my expectations. * Year Crosstabulation

| | | | Year | | | Total |
|--|-------------------|---------------|--------|--------|--------|-------|
| | | | 1995 | 2000 | 2004 | |
| Q17 The educational experience I had at the School of Public Health met my expectations. | Strongly Agree | Count | 12 | 13 | 14 | 39 |
| | | % within Year | 36.4% | 33.3% | 22.6% | 29.1% |
| | 2 | Count | 16 | 18 | 25 | 59 |
| | | % within Year | 48.5% | 46.2% | 40.3% | 44.0% |
| | 3 | Count | 2 | 6 | 15 | 23 |
| | | % within Year | 6.1% | 15.4% | 24.2% | 17.2% |
| | 4 | Count | 0 | 2 | 6 | 8 |
| | | % within Year | .0% | 5.1% | 9.7% | 6.0% |
| | Strongly Disagree | Count | 3 | 0 | 2 | 5 |
| | | % within Year | 9.1% | .0% | 3.2% | 3.7% |
| Total | Count | 33 | 39 | 62 | 134 | |
| | % within Year | 100.0% | 100.0% | 100.0% | 100.0% | |

Q18 My UT-SPH education has prepared me to meet the demands of my current or first public-health related job after leaving the School. * Year Crosstabulation

| | | | Year | | | Total |
|--|-------------------|---------------|--------|--------|--------|-------|
| | | | 1995 | 2000 | 2004 | |
| Q18 My UT-SPH education has prepared me to meet the demands of my current or first public-health related job after leaving the School. | Strongly Agree | Count | 11 | 12 | 11 | 34 |
| | | % within Year | 34.4% | 33.3% | 20.4% | 27.9% |
| | 2 | Count | 13 | 16 | 25 | 54 |
| | | % within Year | 40.6% | 44.4% | 46.3% | 44.3% |
| | 3 | Count | 6 | 7 | 14 | 27 |
| | | % within Year | 18.8% | 19.4% | 25.9% | 22.1% |
| | 4 | Count | 1 | 1 | 2 | 4 |
| | | % within Year | 3.1% | 2.8% | 3.7% | 3.3% |
| | Strongly Disagree | Count | 1 | 0 | 2 | 3 |
| | | % within Year | 3.1% | .0% | 3.7% | 2.5% |
| Total | Count | 32 | 36 | 54 | 122 | |
| | % within Year | 100.0% | 100.0% | 100.0% | 100.0% | |

Q19 The thesis/dissertation helped me integrate the breadth of public health knowledge. * Year Crosstabulation

| | | | Year | | | Total |
|---|-------------------|---------------|--------|--------|--------|-------|
| | | | 1995 | 2000 | 2004 | |
| Q19 The thesis/dissertation helped me integrate the breadth of public health knowledge. | Strongly Agree | Count | 7 | 14 | 17 | 38 |
| | | % within Year | 21.9% | 35.9% | 27.4% | 28.6% |
| | 2 | Count | 19 | 17 | 30 | 66 |
| | | % within Year | 59.4% | 43.6% | 48.4% | 49.6% |
| | 3 | Count | 4 | 3 | 8 | 15 |
| | | % within Year | 12.5% | 7.7% | 12.9% | 11.3% |
| | 4 | Count | 1 | 4 | 2 | 7 |
| | | % within Year | 3.1% | 10.3% | 3.2% | 5.3% |
| | Strongly Disagree | Count | 1 | 1 | 5 | 7 |
| | | % within Year | 3.1% | 2.6% | 8.1% | 5.3% |
| Total | Count | 32 | 39 | 62 | 133 | |
| | % within Year | 100.0% | 100.0% | 100.0% | 100.0% | |

Q20 The thesis/dissertation gave me the opportunity to apply the knowledge that I gained in my educational program towards a relevant public health problem. * Year Crosstabulation

| | | | Year | | | Total |
|--|-------------------|---------------|--------|--------|--------|-------|
| | | | 1995 | 2000 | 2004 | |
| Q20 The thesis/dissertation gave me the opportunity to apply the knowledge that I gained in my educational program towards a relevant public health problem. | Strongly Agree | Count | 14 | 12 | 18 | 44 |
| | | % within Year | 42.4% | 30.8% | 29.0% | 32.8% |
| | 2 | Count | 11 | 18 | 28 | 57 |
| | | % within Year | 33.3% | 46.2% | 45.2% | 42.5% |
| | 3 | Count | 5 | 5 | 9 | 19 |
| | | % within Year | 15.2% | 12.8% | 14.5% | 14.2% |
| | 4 | Count | 2 | 2 | 1 | 5 |
| | | % within Year | 6.1% | 5.1% | 1.6% | 3.7% |
| | Strongly Disagree | Count | 1 | 2 | 6 | 9 |
| | | % within Year | 3.0% | 5.1% | 9.7% | 6.7% |
| Total | Count | 33 | 39 | 62 | 134 | |
| | % within Year | 100.0% | 100.0% | 100.0% | 100.0% | |

Q21 I found the thesis/dissertation to be a useful culminating experience for my degree program. * Year Crosstabulation

| | | | Year | | | Total |
|--|-------------------|---------------|--------|--------|--------|-------|
| | | | 1995 | 2000 | 2004 | |
| Q21 I found the thesis/dissertation to be a useful culminating experience for my degree program. | Strongly Agree | Count | 9 | 15 | 23 | 47 |
| | | % within Year | 27.3% | 38.5% | 37.1% | 35.1% |
| | 2 | Count | 15 | 14 | 21 | 50 |
| | | % within Year | 45.5% | 35.9% | 33.9% | 37.3% |
| | 3 | Count | 6 | 4 | 10 | 20 |
| | | % within Year | 18.2% | 10.3% | 16.1% | 14.9% |
| | 4 | Count | 1 | 3 | 2 | 6 |
| | | % within Year | 3.0% | 7.7% | 3.2% | 4.5% |
| | Strongly Disagree | Count | 2 | 3 | 6 | 11 |
| | | % within Year | 6.1% | 7.7% | 9.7% | 8.2% |
| Total | Count | 33 | 39 | 62 | 134 | |
| | % within Year | 100.0% | 100.0% | 100.0% | 100.0% | |

Q22 The thesis/dissertation helped me prepare for a public health career. * Year Crosstabulation

| | | | Year | | | Total |
|---|-------------------|---------------|--------|--------|--------|-------|
| | | | 1995 | 2000 | 2004 | |
| Q22 The thesis/dissertation helped me prepare for a public health career. | Strongly Agree | Count | 9 | 10 | 14 | 33 |
| | | % within Year | 29.0% | 27.0% | 23.3% | 25.8% |
| | 2 | Count | 9 | 12 | 19 | 40 |
| | | % within Year | 29.0% | 32.4% | 31.7% | 31.3% |
| | 3 | Count | 8 | 8 | 18 | 34 |
| | | % within Year | 25.8% | 21.6% | 30.0% | 26.6% |
| | 4 | Count | 4 | 6 | 5 | 15 |
| | | % within Year | 12.9% | 16.2% | 8.3% | 11.7% |
| | Strongly Disagree | Count | 1 | 1 | 4 | 6 |
| | | % within Year | 3.2% | 2.7% | 6.7% | 4.7% |
| Total | Count | 31 | 37 | 60 | 128 | |
| | % within Year | 100.0% | 100.0% | 100.0% | 100.0% | |

Q23 Do you think your thesis/dissertation was a valuable culminating experience? * Year Crosstabulation

| | | | Year | | | Total |
|--|-------------------|---------------|--------|--------|--------|-------|
| | | | 1995 | 2000 | 2004 | |
| Q23 Do you think your thesis/dissertation was a valuable culminating experience? | Strongly Agree | Count | 9 | 15 | 23 | 47 |
| | | % within Year | 27.3% | 38.5% | 37.1% | 35.1% |
| | 2 | Count | 15 | 14 | 20 | 49 |
| | | % within Year | 45.5% | 35.9% | 32.3% | 36.6% |
| | 3 | Count | 6 | 3 | 10 | 19 |
| | | % within Year | 18.2% | 7.7% | 16.1% | 14.2% |
| | 4 | Count | 1 | 6 | 3 | 10 |
| | | % within Year | 3.0% | 15.4% | 4.8% | 7.5% |
| | Strongly Disagree | Count | 2 | 1 | 6 | 9 |
| | | % within Year | 6.1% | 2.6% | 9.7% | 6.7% |
| Total | Count | 33 | 39 | 62 | 134 | |
| | % within Year | 100.0% | 100.0% | 100.0% | 100.0% | |

Q24 My UT-SPH program enabled me to synthesize and integrate knowledge acquired in course work and other learning experiences. * Year Crosstabulation

| | | | Year | | | Total |
|--|-------------------|---------------|--------|--------|--------|-------|
| | | | 1995 | 2000 | 2004 | |
| Q24 My UT-SPH program enabled me to synthesize and integrate knowledge acquired in course work and other learning experiences. | Strongly Agree | Count | 9 | 14 | 15 | 38 |
| | | % within Year | 29.0% | 43.8% | 28.3% | 32.8% |
| | 2 | Count | 18 | 13 | 22 | 53 |
| | | % within Year | 58.1% | 40.6% | 41.5% | 45.7% |
| | 3 | Count | 3 | 5 | 11 | 19 |
| | | % within Year | 9.7% | 15.6% | 20.8% | 16.4% |
| | 4 | Count | 0 | 0 | 3 | 3 |
| | | % within Year | .0% | .0% | 5.7% | 2.6% |
| | Strongly Disagree | Count | 1 | 0 | 2 | 3 |
| | | % within Year | 3.2% | .0% | 3.8% | 2.6% |
| Total | Count | 31 | 32 | 53 | 116 | |
| | % within Year | 100.0% | 100.0% | 100.0% | 100.0% | |

Q25 My UT-SPH program provided me with and understanding of the areas of knowledge which are basic to public health. * Year Crosstabulation

| | | | Year | | | Total |
|--|-------------------|---------------|--------|--------|--------|--------|
| | | | 1995 | 2000 | 2004 | |
| Q25 My UT-SPH program provided me with and understanding of the areas of knowledge which are basic to public health. | Strongly Agree | Count | 18 | 17 | 17 | 52 |
| | | % within Year | 58.1% | 54.8% | 32.1% | 45.2% |
| | 2 | Count | 10 | 11 | 23 | 44 |
| | | % within Year | 32.3% | 35.5% | 43.4% | 38.3% |
| | 3 | Count | 1 | 3 | 6 | 10 |
| | | % within Year | 3.2% | 9.7% | 11.3% | 8.7% |
| | 4 | Count | 1 | 0 | 4 | 5 |
| | | % within Year | 3.2% | .0% | 7.5% | 4.3% |
| | Strongly Disagree | Count | 1 | 0 | 3 | 4 |
| | | % within Year | 3.2% | .0% | 5.7% | 3.5% |
| Total | | Count | 31 | 31 | 53 | 115 |
| | | % within Year | 100.0% | 100.0% | 100.0% | 100.0% |

Q26 My UT-SPH program provided skills and experience in applying basic public health concepts and specialty knowledge to the solution of community health problems. * Year Crosstabulation

| | | | Year | | | Total |
|---|-------------------|---------------|--------|--------|--------|--------|
| | | | 1995 | 2000 | 2004 | |
| Q26 My UT-SPH program provided skills and experience in applying basic public health concepts and specialty knowledge to the solution of community health problems. | Strongly Agree | Count | 12 | 16 | 12 | 40 |
| | | % within Year | 38.7% | 51.6% | 22.6% | 34.8% |
| | 2 | Count | 13 | 12 | 23 | 48 |
| | | % within Year | 41.9% | 38.7% | 43.4% | 41.7% |
| | 3 | Count | 4 | 3 | 13 | 20 |
| | | % within Year | 12.9% | 9.7% | 24.5% | 17.4% |
| | 4 | Count | 1 | 0 | 4 | 5 |
| | | % within Year | 3.2% | .0% | 7.5% | 4.3% |
| | Strongly Disagree | Count | 1 | 0 | 1 | 2 |
| | | % within Year | 3.2% | .0% | 1.9% | 1.7% |
| Total | | Count | 31 | 31 | 53 | 115 |
| | | % within Year | 100.0% | 100.0% | 100.0% | 100.0% |

Q27 My research degree program adequately prepared me for an academic career. * Year Crosstabulation

| | | | Year | | | Total |
|---|----------------|---------------|--------|--------|--------|--------|
| | | | 1995 | 2000 | 2004 | |
| Q27 My research degree program adequately prepared me for an academic career. | Strongly Agree | Count | 3 | 5 | 3 | 11 |
| | | % within Year | 37.5% | 33.3% | 20.0% | 28.9% |
| | 2 | Count | 4 | 5 | 9 | 18 |
| | | % within Year | 50.0% | 33.3% | 60.0% | 47.4% |
| | 3 | Count | 1 | 3 | 2 | 6 |
| | | % within Year | 12.5% | 20.0% | 13.3% | 15.8% |
| | 4 | Count | 0 | 2 | 1 | 3 |
| | | % within Year | .0% | 13.3% | 6.7% | 7.9% |
| Total | | Count | 8 | 15 | 15 | 38 |
| | | % within Year | 100.0% | 100.0% | 100.0% | 100.0% |

Q28 My UT-SPH degree program provided me with a public health perspective in the application of my specialty area. * Year Crosstabulation

| | | | Year | | | Total |
|--|----------------|---------------|--------|--------|--------|--------|
| | | | 1995 | 2000 | 2004 | |
| Q28 My UT-SPH degree program provided me with a public health perspective in the application of my specialty area. | Strongly Agree | Count | 1 | 6 | 5 | 12 |
| | | % within Year | 16.7% | 37.5% | 29.4% | 30.8% |
| | 2 | Count | 5 | 6 | 9 | 20 |
| | | % within Year | 83.3% | 37.5% | 52.9% | 51.3% |
| | 3 | Count | 0 | 4 | 2 | 6 |
| | | % within Year | .0% | 25.0% | 11.8% | 15.4% |
| | 4 | Count | 0 | 0 | 1 | 1 |
| | | % within Year | .0% | .0% | 5.9% | 2.6% |
| Total | | Count | 6 | 16 | 17 | 39 |
| | | % within Year | 100.0% | 100.0% | 100.0% | 100.0% |

Q29 If you took any classes in which Interactive Television (ITV) was utilized, was the experience satisfactory? * Year Crosstabulation

| | | | Year | | | Total |
|--|-----|---------------|--------|--------|--------|--------|
| | | | 1995 | 2000 | 2004 | |
| Q29 If you took any classes in which Interactive Television (ITV) was utilized, was the experience satisfactory? | Yes | Count | 3 | 16 | 30 | 49 |
| | | % within Year | 10.3% | 47.1% | 52.6% | 40.8% |
| | No | Count | 26 | 18 | 27 | 71 |
| | | % within Year | 89.7% | 52.9% | 47.4% | 59.2% |
| Total | | Count | 29 | 34 | 57 | 120 |
| | | % within Year | 100.0% | 100.0% | 100.0% | 100.0% |

Q30 If it had been available, would you have chosen to take a course online? * Year Crosstabulation

| | | | Year | | | Total |
|--|---------------|---------------|--------|--------|--------|-------|
| | | | 1995 | 2000 | 2004 | |
| Q30 If it had been available, would you have chosen to take a course online? | Yes | Count | 12 | 15 | 28 | 55 |
| | | % within Year | 41.4% | 40.5% | 45.9% | 43.3% |
| | No | Count | 17 | 22 | 33 | 72 |
| | | % within Year | 58.6% | 59.5% | 54.1% | 56.7% |
| Total | Count | 29 | 37 | 61 | 127 | |
| | % within Year | 100.0% | 100.0% | 100.0% | 100.0% | |

Q31 Would you take continuing education workshop if available online in the future? * Year Crosstabulation

| | | | Year | | | Total |
|---|---------------|---------------|--------|--------|--------|-------|
| | | | 1995 | 2000 | 2004 | |
| Q31 Would you take continuing education workshop if available online in the future? | Yes | Count | 19 | 25 | 44 | 88 |
| | | % within Year | 65.5% | 69.4% | 71.0% | 69.3% |
| | No | Count | 10 | 11 | 18 | 39 |
| | | % within Year | 34.5% | 30.6% | 29.0% | 30.7% |
| Total | Count | 29 | 36 | 62 | 127 | |
| | % within Year | 100.0% | 100.0% | 100.0% | 100.0% | |

Q32 If it had been available, would you have chosen to take any of the courses by computer-based instruction? * Year Crosstabulation

| | | | Year | | | Total |
|---|---------------|---------------|--------|--------|--------|-------|
| | | | 1995 | 2000 | 2004 | |
| Q32 If it had been available, would you have chosen to take any of the courses by computer-based instruction? | Yes | Count | 12 | 14 | 30 | 56 |
| | | % within Year | 41.4% | 38.9% | 49.2% | 44.4% |
| | No | Count | 17 | 22 | 31 | 70 |
| | | % within Year | 58.6% | 61.1% | 50.8% | 55.6% |
| Total | Count | 29 | 36 | 61 | 126 | |
| | % within Year | 100.0% | 100.0% | 100.0% | 100.0% | |

Q33 Would you take a course if available online in the future? * Year Crosstabulation

| | | | Year | | | Total |
|--|---------------|---------------|--------|--------|--------|-------|
| | | | 1995 | 2000 | 2004 | |
| Q33 Would you take a course if available online in the future? | Yes | Count | 16 | 21 | 35 | 72 |
| | | % within Year | 55.2% | 58.3% | 58.3% | 57.6% |
| | No | Count | 13 | 15 | 25 | 53 |
| | | % within Year | 44.8% | 41.7% | 41.7% | 42.4% |
| Total | Count | 29 | 36 | 60 | 125 | |
| | % within Year | 100.0% | 100.0% | 100.0% | 100.0% | |

Q34 Would you take a degree program if available online in the future? * Year Crosstabulation

| | | | Year | | | Total |
|--|---------------|---------------|--------|--------|--------|-------|
| | | | 1995 | 2000 | 2004 | |
| Q34 Would you take a degree program if available online in the future? | Yes | Count | 9 | 7 | 18 | 34 |
| | | % within Year | 31.0% | 18.9% | 29.5% | 26.8% |
| | No | Count | 20 | 30 | 43 | 93 |
| | | % within Year | 69.0% | 81.1% | 70.5% | 73.2% |
| Total | Count | 29 | 37 | 61 | 127 | |
| | % within Year | 100.0% | 100.0% | 100.0% | 100.0% | |

Q35 The school provided adequate research opportunities for me. * Year Crosstabulation

| | | | Year | | | Total |
|---|-------------------|---------------|--------|--------|--------|-------|
| | | | 1995 | 2000 | 2004 | |
| Q35 The school provided adequate research opportunities for me. | Strongly Agree | Count | 7 | 10 | 14 | 31 |
| | | % within Year | 24.1% | 28.6% | 23.0% | 24.8% |
| | 2 | Count | 9 | 16 | 21 | 46 |
| | | % within Year | 31.0% | 45.7% | 34.4% | 36.8% |
| | 3 | Count | 10 | 5 | 17 | 32 |
| | | % within Year | 34.5% | 14.3% | 27.9% | 25.6% |
| | 4 | Count | 2 | 3 | 6 | 11 |
| | | % within Year | 6.9% | 8.6% | 9.8% | 8.8% |
| | Strongly Disagree | Count | 1 | 1 | 3 | 5 |
| | | % within Year | 3.4% | 2.9% | 4.9% | 4.0% |
| Total | Count | 29 | 35 | 61 | 125 | |
| | % within Year | 100.0% | 100.0% | 100.0% | 100.0% | |

Q36 My research experience provided me the skills to evaluate the scientific literature critically. * Year Crosstabulation

| | | | Year | | | Total |
|---|-------------------|---------------|--------|--------|--------|-------|
| | | | 1995 | 2000 | 2004 | |
| Q36 My research experience provided me the skills to evaluate the scientific literature critically. | Strongly Agree | Count | 9 | 13 | 19 | 41 |
| | | % within Year | 31.0% | 37.1% | 31.1% | 32.8% |
| | 2 | Count | 10 | 16 | 26 | 52 |
| | | % within Year | 34.5% | 45.7% | 42.6% | 41.6% |
| | 3 | Count | 8 | 5 | 12 | 25 |
| | | % within Year | 27.6% | 14.3% | 19.7% | 20.0% |
| | 4 | Count | 1 | 1 | 3 | 5 |
| | | % within Year | 3.4% | 2.9% | 4.9% | 4.0% |
| | Strongly Disagree | Count | 1 | 0 | 1 | 2 |
| | | % within Year | 3.4% | .0% | 1.6% | 1.6% |
| Total | Count | 29 | 35 | 61 | 125 | |
| | % within Year | 100.0% | 100.0% | 100.0% | 100.0% | |

Q37 My research experience provided me the skills to develop my own solution to the scientific/public health problem. * Year Crosstabulation

| | | | Year | | | Total |
|---|-------------------|---------------|--------|--------|--------|-------|
| | | | 1995 | 2000 | 2004 | |
| Q37 My research experience provided me the skills to develop my own solution to the scientific/public health problem. | Strongly Agree | Count | 8 | 12 | 20 | 40 |
| | | % within Year | 28.6% | 34.3% | 32.8% | 32.3% |
| | 2 | Count | 15 | 17 | 20 | 52 |
| | | % within Year | 53.6% | 48.6% | 32.8% | 41.9% |
| | 3 | Count | 3 | 4 | 18 | 25 |
| | | % within Year | 10.7% | 11.4% | 29.5% | 20.2% |
| | 4 | Count | 1 | 2 | 2 | 5 |
| | | % within Year | 3.6% | 5.7% | 3.3% | 4.0% |
| | Strongly Disagree | Count | 1 | 0 | 1 | 2 |
| | | % within Year | 3.6% | .0% | 1.6% | 1.6% |
| Total | Count | 28 | 35 | 61 | 124 | |
| | % within Year | 100.0% | 100.0% | 100.0% | 100.0% | |

Q38 My research experience provided me the skills to communicate my findings effectively. * Year Crosstabulation

| | | | Year | | | Total |
|---|-------------------|---------------|--------|--------|--------|--------|
| | | | 1995 | 2000 | 2004 | |
| Q38 My research experience provided me the skills to communicate my findings effectively. | Strongly Agree | Count | 8 | 13 | 20 | 41 |
| | | % within Year | 27.6% | 37.1% | 32.8% | 32.8% |
| | 2 | Count | 14 | 19 | 26 | 59 |
| | | % within Year | 48.3% | 54.3% | 42.6% | 47.2% |
| | 3 | Count | 6 | 2 | 13 | 21 |
| | | % within Year | 20.7% | 5.7% | 21.3% | 16.8% |
| | 4 | Count | 0 | 0 | 2 | 2 |
| | | % within Year | .0% | .0% | 3.3% | 1.6% |
| | Strongly Disagree | Count | 1 | 1 | 0 | 2 |
| | | % within Year | 3.4% | 2.9% | .0% | 1.6% |
| Total | | Count | 29 | 35 | 61 | 125 |
| | | % within Year | 100.0% | 100.0% | 100.0% | 100.0% |

Q39 My research experience provided me with research ethics training. * Year Crosstabulation

| | | | Year | | | Total |
|---|-------------------|---------------|--------|--------|--------|--------|
| | | | 1995 | 2000 | 2004 | |
| Q39 My research experience provided me with research ethics training. | Strongly Agree | Count | 6 | 8 | 21 | 35 |
| | | % within Year | 20.7% | 22.9% | 34.4% | 28.0% |
| | 2 | Count | 13 | 18 | 19 | 50 |
| | | % within Year | 44.8% | 51.4% | 31.1% | 40.0% |
| | 3 | Count | 8 | 6 | 18 | 32 |
| | | % within Year | 27.6% | 17.1% | 29.5% | 25.6% |
| | 4 | Count | 1 | 3 | 3 | 7 |
| | | % within Year | 3.4% | 8.6% | 4.9% | 5.6% |
| | Strongly Disagree | Count | 1 | 0 | 0 | 1 |
| | | % within Year | 3.4% | .0% | .0% | .8% |
| Total | | Count | 29 | 35 | 61 | 125 |
| | | % within Year | 100.0% | 100.0% | 100.0% | 100.0% |

Q40 I had the opportunity to develop a field experience that was appropriate to my career needs. * Year Crosstabulation

| | | | Year | | | Total |
|--|-------------------|---------------|--------|--------|--------|-------|
| | | | 1995 | 2000 | 2004 | |
| Q40 I had the opportunity to develop a field experience that was appropriate to my career needs. | Strongly Agree | Count | 8 | 8 | 16 | 32 |
| | | % within Year | 28.6% | 25.0% | 27.1% | 26.9% |
| | 2 | Count | 9 | 14 | 23 | 46 |
| | | % within Year | 32.1% | 43.8% | 39.0% | 38.7% |
| | 3 | Count | 2 | 8 | 16 | 26 |
| | | % within Year | 7.1% | 25.0% | 27.1% | 21.8% |
| | 4 | Count | 5 | 2 | 1 | 8 |
| | | % within Year | 17.9% | 6.3% | 1.7% | 6.7% |
| | Strongly Disagree | Count | 4 | 0 | 3 | 7 |
| | | % within Year | 14.3% | .0% | 5.1% | 5.9% |
| Total | Count | 28 | 32 | 59 | 119 | |
| | % within Year | 100.0% | 100.0% | 100.0% | 100.0% | |

Q41 If available during my degree program, the internship/practicum experience helped me to put theory into application. * Year Crosstabulation

| | | | Year | | | Total |
|--|-------------------|---------------|--------|--------|--------|-------|
| | | | 1995 | 2000 | 2004 | |
| Q41 If available during my degree program, the internship/practicum experience helped me to put theory into application. | Strongly Agree | Count | 4 | 9 | 12 | 25 |
| | | % within Year | 22.2% | 40.9% | 24.0% | 27.8% |
| | 2 | Count | 10 | 10 | 17 | 37 |
| | | % within Year | 55.6% | 45.5% | 34.0% | 41.1% |
| | 3 | Count | 3 | 2 | 17 | 22 |
| | | % within Year | 16.7% | 9.1% | 34.0% | 24.4% |
| | 4 | Count | 0 | 1 | 2 | 3 |
| | | % within Year | .0% | 4.5% | 4.0% | 3.3% |
| | Strongly Disagree | Count | 1 | 0 | 2 | 3 |
| | | % within Year | 5.6% | .0% | 4.0% | 3.3% |
| Total | Count | 18 | 22 | 50 | 90 | |
| | % within Year | 100.0% | 100.0% | 100.0% | 100.0% | |

Q42 If available during my degree program, the internship/practicum experience was valuable to my career. *
Year Crosstabulation

| | | | Year | | | Total |
|---|-------------------|---------------|--------|--------|--------|-------|
| | | | 1995 | 2000 | 2004 | |
| Q42 If available during my degree program, the internship/practicum experience was valuable to my career. | Strongly Agree | Count | 7 | 11 | 15 | 33 |
| | | % within Year | 38.9% | 52.4% | 30.0% | 37.1% |
| | 2 | Count | 6 | 6 | 16 | 28 |
| | | % within Year | 33.3% | 28.6% | 32.0% | 31.5% |
| | 3 | Count | 3 | 3 | 14 | 20 |
| | | % within Year | 16.7% | 14.3% | 28.0% | 22.5% |
| | 4 | Count | 1 | 1 | 2 | 4 |
| | | % within Year | 5.6% | 4.8% | 4.0% | 4.5% |
| | Strongly Disagree | Count | 1 | 0 | 3 | 4 |
| | | % within Year | 5.6% | .0% | 6.0% | 4.5% |
| Total | Count | 18 | 21 | 50 | 89 | |
| | % within Year | 100.0% | 100.0% | 100.0% | 100.0% | |